

# **Fact Book**

## **Fall 2016**



**Fayetteville State University**  
**Office of Institutional Research**

# TABLE OF CONTENTS

## General Information

Statement of Educational Mission, Philosophy and Values .....	2
Administration .....	3
History of Fayetteville State University .....	7
University of North Carolina Board of Governors .....	10
Institutional Memberships, Accreditation, Centers and Special Programs.....	11
Fayetteville State University Organizational Chart .....	12
Academic Program Inventory .....	13

## Students

<b>Narrative Summary of Student Data .....</b>	<b>19</b>
--	-----------

<b>First Time Freshmen Enrolled 2011-2016 by Gender and Age .....</b>	<b>20</b>
By Residency and Race .....	21
By SAT Verbal and Math Scores.....	22
By SAT Combined Score and High School GPA.....	23
By Class Rank in Quintiles and Quartiles.....	24

<b>Total Student Enrollment 2011-2016 by Gender and Age .....</b>	<b>25</b>
By Residency .....	26
By Race .....	27
By Enrolled Status and Citizenship .....	28
By Housing Status and Semester Credit Hours .....	29
By Transfer Hours Applied.....	30
By Classification .....	31
Undergraduate By Major .....	34
Graduate By Major .....	36
Upper Division (junior, senior, and graduate) Enrollment 2013-2015.....	38

<b>Degrees Conferred 2011-2016 Comparison by Level and Month .....</b>	<b>39</b>
By Residency and Teacher Certification .....	40
By Race.....	41
By Gender and Citizenship .....	42
Degrees Awarded By Major .....	43
Degrees Awarded By County 2013-2016.....	45
Degrees Awarded By State 2013-2016 .....	53
Retention, Graduation, and Persistence Rates .....	57

## **Faculty and Staff**

<b>Full-Time Faculty 2013-2016</b> AAUP By Gender and Race .....	59
By Tenure Status and Position .....	60
By Degree and Average Salary .....	61
<b>Employees 2011-2016</b> By Race and Gender.....	64
By Status .....	65
Employee Statistics Fall 2013-Fall 2016 .....	66

## **Finances**

Finance Report Fiscal Years 2012-2016.....	67
IPEDS Finance Survey Fiscal Years 2011-2016 .....	68
Detailed Tuition and Fees Fall 2016-Spring 2017 .....	74
Financial Aid 2011-2016 By Type and Dollars .....	76
Financial Aid Comparative Statistics 2013-2016 .....	77
Economic Impact of Fayetteville State University .....	80

## **Facilities**

Facilities Inventory .....	85
----------------------------	----

# General Information

## Institutional Profile Fall 2016

Established:	1867
Control:	State
Highest Degree Offering:	Doctorate
Accreditation:	Southern Association of Colleges and Schools
FICE Code:	002928
Level:	Comprehensive I
School Motto:	Res Non Verba “Deeds not Words”
School Colors:	White & Blue
School Song:	“Old White and Blue” by Mary T. Eldridge
School Mascot:	Bronco
Fall Enrollment:	6,223 (5,543 undergraduate)
Top Majors:	Nursing, General Studies, Business Administration, and Psychology
Degree Areas:	Bachelor – 33, Master – 8, Doctor – 1
Estimated Annual In State Costs:	\$7,687 – undergraduate (room & board \$14,936) \$8,135 – graduate
Demographics:	Female – 68%, Black – 62%, In State – 96%
Employees:	Total – 894, Full-Time Faculty – 256 (80% hold a doctorate or 1 <sup>st</sup> professional degree)
Facilities:	38 buildings on 156 acres
Annual Budget (FY 2016):	\$112,820,060



# General Information

## Statement of Educational Mission



Fayetteville State University (FSU) is a public comprehensive regional university that promotes the educational, social, cultural, and economic transformation of southeastern North Carolina and beyond. The primary mission of FSU is to provide students with the highest quality learning experiences that will produce global citizens and leaders as change agents for shaping the future of the State. Awarding degrees at the baccalaureate and master's levels, and the doctorate in educational leadership, FSU offers programs in teacher education, the arts and sciences, health professions, business and economics, and unique and emerging fields. FSU is an institution of opportunity and diversity. Committed to excellence in teaching, research, scholarship, and service, the university extends its services and programs to the community, including the military, and other educational institutions throughout North Carolina, the nation, and the world. (*Approved by UNC Board of Governors, October 9, 2009.*)

### FSU Core Values

- **Student Success and the Pursuit of Excellence**  
We believe in student success and the obligation of the university to provide the highest quality learning experiences and academic programs to facilitate student success, intellectual and cultural growth, excellence in scholarship, leadership, and ethical standards.
- **Shared Governance**  
We believe in shared governance, fiscal responsibility, a commitment to life-long learning, and professional development for faculty, staff, and students.
- **Global Responsibility**  
We believe in respect for diversity, global responsibility, conservation of natural resources, and a commitment to sustainability.
- **Collaboration**  
We believe in outreach, partnerships with educational institutions, engagement with the military and the community, economic transformation of the state, and service to others.

### FSU Strategic Priorities 2015 - 2020

1. Graduation and Retention Rates
2. Collaborations and Partnerships
3. Efficiency, Effectiveness, and Sustainability

## **FSU Administration 2016-2017**

### **Board of Trustees**

Mr. Jodie Ervin, Chair  
Mrs. Vedas Neal, Vice Chair  
Mr. Claude, Bogues, Secretary  
Dr. Richard Clayton Adams  
Mr. Edward E. Dickerson  
Mr. Elliot Jackson (Ex-Officio)  
Dr. Inder Nijhawan  
Mr. Donald L. Porter  
Mr. Rajan Shamdasani  
Ms. Brenda Timberlake  
Mr. Kirk deViere  
Suzetta Perkins, Secretary of the University  
Staff Liaison/Assistant Secretary

### Emeriti

Dr. W. T. Brown  
Mr. Felton J. Capel  
Dr. Jack V. Hill  
Mr. James M. Paige

### **Chancellor's Cabinet**

**James A. Anderson**, B.A., Ph.D.

Chancellor

**Vacant**

Vice Chancellor and Chief of Staff

**Jon Young**, B.A., M.A., Ph.D.

Provost and Vice Chancellor for Academic Affairs

**Janice Haynie**, B.A., Ph.D.

Vice Chancellor for Student Affairs

**Arasu "Nick" Ganesan**, B.A., M.B.A.

Vice Chancellor for Inform. Tech. & Telecom Services

**Vacant**

Vice Chancellor for Institutional Advancement

**Kenneth Craig**, B.B.A., M.B.A.

Vice Chancellor for Business and Finance

**Wanda D. Jenkins**, B.B.A., M.B.A., J.D.

Chief Compliance Officer and General Counsel

**Anthony Bennett**, B.S., M.B.A.

Director of Athletics

**Bertha H. Miller**, B.S., M.A., Ph.D.

Executive Assistant to the Chancellor for Strategic Initiatives

**Ann Zomerfeld**, B.S., M.B.A.

Executive Assistant to the Chancellor

## Deans

**Samuel Adu-Mireku**, B.A., M.S., Ph.D.  
Interim Dean, College of Arts and Sciences

**John I. Brooks**, B.A., M.A., Ph.D.  
Dean of University College

**Marion Gillis-Olion**, B.A., M.A., Ph.D.  
Dean, School of Education

**Pamela Jackson**, B.A., M.S., M.B.A., Ph.D.  
Dean, School of Business and Economics

\*\*\*\*\*

**Tyson Beale**

Associate Vice Chancellor for Student  
Affairs/Director of Student Conduct

**Yolanda Bonnette**

Associate Vice Chancellor for Business &  
Finance/Title III Coordinator

**Juanette Council**

Associate Vice Chancellor for Student  
Affairs

**Michelle Daley**

Associate Vice Chancellor and Deputy  
CIO

**Daryush IIA**

Associate Vice Chancellor for Research  
& Technology Transfer

**Charles F. Kimble**

Associate Vice Chancellor for Police and  
Public Safety/Chief

**Perry Massey**

Senior Associate Vice Chancellor for  
Academic Affairs

**Ben Minter**

Assistant Vice Chancellor of Events

**Greg Moyd**

Assistant Vice Chancellor for Student  
Affairs

**Jon Parsons**

Interim Associate Vice Chancellor for  
Facilities Management

**Rollinda Thomas**

Interim Assistant Vice Chancellor for  
Academic Affairs/SACS Liaison

**Terri Tibbs**

Associate Vice Chancellor for Human  
Resources

**Vacant**

Associate Vice Chancellor of Major  
Gifts

**Vacant**

Associate Vice Chancellor for  
Enrollment Management

**Vacant**

Associate Vice Chancellor of  
Development

**Jeffery Womble**

Assistant Vice Chancellor of  
Communications

\*\*\*\*\*

**Veronica Alexander**

Director of Military Affiliated Services

**Miriam DeLone**

Interim Associate Dean, College of Arts  
and Sciences

**Joe Alston**

Director of Business Services

**Jesse Baker**

Director of Data And Assessment

**Sarah Baker**

Interim University Registrar

**Ulisa Bowles**

Director of Admissions

**Tamara Holmes Brothers**  
 Director of Corporate and Foundation Relations

**J Lee Brown**  
 Assistant Dean, School of Business & Economics/Director of Pre-Business Program

**Timothy Buckner**  
 Director of the Foreign Language Lab

**Julian Capel**  
 Director of Student Engagement

**Kevin Crutchfield**  
 Director of Materials Management

**Gloria Moore Carter**  
 Director of Early Childhood Learning Center

**Yunkai Chen**  
 Director of the International Education Programs

**Dana L. Dalton**  
 Director of Institutional Research

**Sherree R.B. Davis**  
 Director of The Office of Civic Engagement & Service Learning

**Miriam DeLone**  
 Interim Associate Dean, College of Arts and Sciences

**Kamesia Ewing**  
 Director of Financial Aid

**Wesley Fountain**  
 Director of Government Relations

**Bonnie Grohe**  
 Director of The Office of Faculty Development

**Ashley Johnson**  
 Director of Financial Reporting

**Clanton D. Johnson**  
 Director of Advancement Services

**Cynthia Jones**  
 Treasurer/Bursar

**Christine Jumalon**  
 Contoller

**Brent Lewis**  
 Director of Cultural Programs/The Safe Zone Office

**Steven Mack**  
 Director of Budgeting

**Milton Marshburn**  
 Director of the Small Business and Technology Development Center

**Greg McElveen**  
 Assistant Dean for Strategic Initiatives

**LaWanda Miller**  
 Budget Officer

**Gerald Mitchell**  
 Associate Dean of University College

**Noran Moffett**  
 Associate Dean, School of Education

**Alvis Moore**  
 Testing Coordinator

**Andrea Neal**  
 Director of Special Programs

**Jon Parsons**  
 Director of Operations/Energy Management

**Blanche Radford-Curry**  
 Assistant Dean, College of Arts and Sciences

**Karen Ray**  
 Director of Health Services

**YaKima Rhinehart**  
 Director of Alumni Affairs

**Fred Sapp**  
 Director of The Center for Personal Development

**John Scarsella**  
 MBA Director of Admissions

**Ernestine Spears**  
 Director of Student Accounts

**Jane Smith**  
 Director of The Office of Continuing Education/Office of Summer School

**Curtis Street**  
 Director of Career Services

**Courtney Thompson**  
 Director of Student Life and Housing

**Teresa Thompson-Pinckney**  
 Director of The Office of College Access Programs

**Vacant**  
 Director of Major Planned Gifts

**Vacant**  
 Director of Business Center

**Abdoul Wane**  
 Director of The Center for Economic Education

**Jenny Washington**  
 Director of Teacher Education

**Tavoria Wax**  
 Director of The Enrollment Services Center

**Erin White**  
 Interim Director of Honors Program

**Ashley Williams**  
 Director of Purchasing

**Elliott Williams**



Interim Director of Intramurals  
**Bobby Wynn**

Director of Library Services

\*\*\*\*\*

**Adegoke Ademiluyi**  
Chair, Department of Government and  
History  
**Cevdet Akbay**  
Chair, Department of Chemistry and  
Physics  
**Afua Arhin**  
Chair, Department of Nursing  
**Joe Brown**  
Interim Chair, Department of Criminal  
Justice  
**Kimberly Smith Burton**  
Chair, Department of Middle  
Grades, Secondary and Special  
Education/ Director of Math/Science  
Education Center  
**Todd S. Frobish**  
Chair, Department of Communication,  
Languages and Cultures  
**Sabrina Gammage**  
Chair, Department of Military Science  
**Abdelmajid Kassem**  
Chair, Department of Biological Sciences  
**Ji Young Kim**  
Interim Chair, Department of English  
**Earnest Lamb**  
Chair, Department of Performing and  
Fine Arts

**Constance Lightner**  
Interim Chair, Department of  
Management, Marketing, and  
Entrepreneurship  
**Nicole Lucas**  
Chair, Department of Sociology  
**Priscilla Manarino-Leggett**  
Chair, Department of Elementary  
Education  
**Jay Miller**  
Chair, Department of Aerospace Studies  
**Daniel Montoya**  
Interim Chair, Department of Psychology  
**Terri Moore-Brown**  
Chair, Department of Social Work  
**Radoslav Nickolov**  
Chair, Department of Math/Computer  
Science  
**Ulysses Taylor**  
Chair, Department of Accounting,  
Finance, Healthcare Administration, and  
Information Systems  
**Linda Wilson-Jones**  
Chair, Department of  
Educational Leadership/  
Ed.D. Director

## History of Fayetteville State University

In 1867, seven black men - Matthew N. Leary, Jr., A. J. Chesnutt, Robert Simmons, George Grainger, Jr., Thomas Lomax, Nelson Carter, and David A. Bryant - paid \$136 for two lots on Gillespie Street and converted themselves into a self-perpetuating Board of Trustees to maintain this property permanently as a site for the education of black children in Fayetteville. General Oliver O. Howard of the Freedman's Bureau, erected a building on this site, and the institution became known as the Howard School. Robert Harris was selected as the principal.

By a legislative act of 1877, the North Carolina General Assembly provided for the establishment of a Normal School for the education of black teachers. The Howard School was chosen as the most promising because of its successful record during the previous ten years under the leadership of Robert Harris. Its name was changed to the State Colored Normal School and Harris remained as principal until his death in 1880.

Charles W. Chesnutt was principal from 1880 to 1883. He emphasized foreign languages, social graces, and intellectual development as keys to success. He resigned to pursue a literary career and indeed became one of the leading black American writers of fiction between 1887 and 1930.

Ezekiel E. Smith became the third principal in 1883 and would serve three different terms in this leadership position. His first term as principal lasted from 1883-1888. He expanded the curriculum to better prepare teachers for the public grammar schools. In 1888 George Williams became the principal and introduced a Speaker's Series. Smith returned in 1895 after serving as an ambassador in Liberia. In 1898, he left to serve in the Spanish American War. Reverend Leonard E. Fairley served as acting principal until Smith returned in 1899.

Between 1899 and 1933, Dr. E.E. Smith's vision for excellence in teaching would lay the framework for the Normal School to become a college. By the time he retired in 1933, the school had grown from three rooms in a small frame structure to a physical plant of ten buildings on a fifty-acre tract of land. Black and white citizens contributed funds along with Dr. Smith, F. D. Williston, E. N. Williams, J. G. Smith and Dr. P. N. Melchor, to purchase the initial forty acres of land. With the erection of the Aycock Building by the state in 1908, the school began its permanent residency on Murchison Road. Smith's title was changed from principal to president in 1927. The Newbold School, a practice school for teachers, was erected on the campus in 1930. Dr. E.E. Smith's ideas about teacher training set the pace for teacher education throughout the state. His years of service covered a span of fifty years-1883 to 1933.

Dr. James Ward Seabrook became the president in 1933. Under his presidency the school became Fayetteville State Teachers College, thereafter being authorized to grant the Bachelor of Science Degree in Elementary Education. Cultural activities, student organizations, and significant physical expansion contributed to the complete transformation from a normal school to a college. The college received both state and regional accreditation in 1947.

Dr. Rudolph Jones succeeded Dr. Seabrook in 1956. During his administration, the curriculum was expanded to include majors in secondary education and programs leading to degrees outside the teaching field. The name of the school was changed to Fayetteville State College in 1963. FSC students were active participants in the Civil Rights Movement of the sixties and helped to bring about integration in Fayetteville. Also, under the leadership of Dr. Jones, six additions were made to the physical plant to accommodate a rapidly expanding enrollment.

Dr. Charles A. Lyons, Jr. was appointed president in 1969 and the institution acquired its present name. By a legislative act in 1972, Fayetteville State University became a constituent institution of the University of North Carolina System, and Dr. Lyons became its first Chancellor. During his tenure, the curriculum was expanded to include a variety of both baccalaureate and master's level programs. The Fort Bragg-Pope AFB Extension Center, in conjunction with the Weekend and Evening College, was established in order to provide military personnel and other full-time working people with the opportunity to further their education. The general academic structure took its present configuration in 1985 when the university became a Comprehensive Level I Institution. In addition to expanding program offerings and services, eight buildings were added to the physical plant during this period.

On January 1, 1988, Dr. Lloyd V. Hackley became the eighth Chief Executive Officer of the university. In his seven years as Chancellor, the university expanded its master's level program offerings to include biology, business administration, education, English, history, mathematics, psychology, and sociology, and FSU's first doctoral program in Educational Leadership was established. Baccalaureate program offerings were also increased to include 36 disciplines in the arts and sciences, business and economics, and education. Hackley strengthened FSU's community outreach to at-risk children in the public schools and established numerous scholarship and tutoring/mentoring programs to encourage more young people to aspire to academic excellence and a college education. FSU's first major public Capital Campaign was also completed, which enabled the university to increase the number of privately funded scholarships. The student population doubled in numbers and in diversity during his administration. The addition of the ultra-modern School of Business and Economics Building and the Health and Physical Education Building underscored Dr. Hackley's commitment to FSU's continued expansion and growth. On December 31, 1994, Dr. Hackley left his post to become President of the North Carolina Department of Community Colleges, the first African-American to lead the state's system of 59 community colleges.

Dr. Donna J. Benson, Associate Vice President for Academic Affairs of the University of North Carolina served as Interim Chancellor from January 1, 1995 to November 15, 1995. Capital improvements included renovation of dormitories and completion of the Distance Learning Center in the Communications Building.

In 1995 Dr. Willis B. McLeod, a 1964 graduate of Fayetteville State University, became the ninth Chief Executive Officer of FSU and the first alumnus to serve as Chancellor. Among the initiatives he instituted were the "Freshman Year Initiative" (or F.Y.I.), a program designed to enhance students' educational outcomes; new outreach efforts aimed at forging stronger community ties; and formed a regional partnership of public school, community college, and university leaders which focused on strengthening the educational pipeline from pre-school to post-graduate studies. Renovation and improvement of campus facilities were achieved, including all air-conditioned buildings. A strong cultural and fine arts series and fourteen CIAA championships bolstered Bronco Pride.

Dr. T. J. Bryan assumed the position of Chancellor on July 1, 2003. As the tenth chief executive officer of the university, Dr. Bryan was the first African-American woman selected to lead a constituent institution of the University of North Carolina. Dr. Bryan developed new academic programs, obtained specialized accreditation for several programs, strengthened student recruitment and support programs, and improved buildings and grounds. Under her leadership, a four-year nursing program and an Honors Program were established.

In 2007 Dr. Lloyd V. Hackley returned as Interim Chancellor. He launched projects to carry out the initiatives of UNC Tomorrow, placed FSU on a sound course for fiscal solvency, and introduced a number of organizational changes for greater efficiency of operations.

Dr. James A. Anderson was named the eleventh Chief Executive Officer of Fayetteville State University on March 7, 2008. Under Chancellor Anderson's leadership, the university has established a five year strategic plan for growth, expanded academic program offerings, added global education and study abroad, and increased certification and accreditation of academic programs. The university has expanded partnerships with universities, corporations, and the military. Outreach also includes service learning, a community computer center, a Veteran Center, the Early High School College, the Center for Defense and Homeland Security, and many collaborative cultural activities with community agencies.

Dr. Anderson is committed to making FSU a university of choice by enabling students to be successful through advanced technology, new cutting edge academic programs, expanded partnerships with the community and educational institutions, globalism, an improved campus environment, and professional development opportunities for faculty, staff, and students.

**Administration of the University of North Carolina**

**The Board of Governors**

**W. Louis Bissette, Jr., Chairman**  
**Joan Templeton Perry, M.D., Secretary**

Roger Aiken  
W. Louis Bissette, Jr.  
Pearl Burris-Floyd  
C. Philip Byers  
Walter C. Davenport  
Madeline Finnegan (Ex-Officio)  
Thom Goolsby  
H. Frank Grainger  
Henry W. Hinton  
James L. Holmes, Jr.  
Joe Knott  
W. Marty Kotis III  
Scott Lampe  
Steven B. Long  
Joan G. MacNeill  
Ann Maxwell  
J. Alex Mitchell  
W. G. Champion Mitchell  
Anna S. Nelson  
R. Doyle Parrish  
Joan Templeton Perry  
Therence O. Pickett  
David M. Powers  
Robert S. Rippy  
O. Temple Sloan III  
Harry L. Smith, Jr.  
J. Craig Souza  
George A. Sywassink  
William Webb  
Laura I. Wiley  
Michael Williford

**Emeritus Members**

Hannah D. Gage

## **Institutional Memberships and Accreditations**

The university holds institutional membership and/or accreditation in the following agencies and professional organizations:

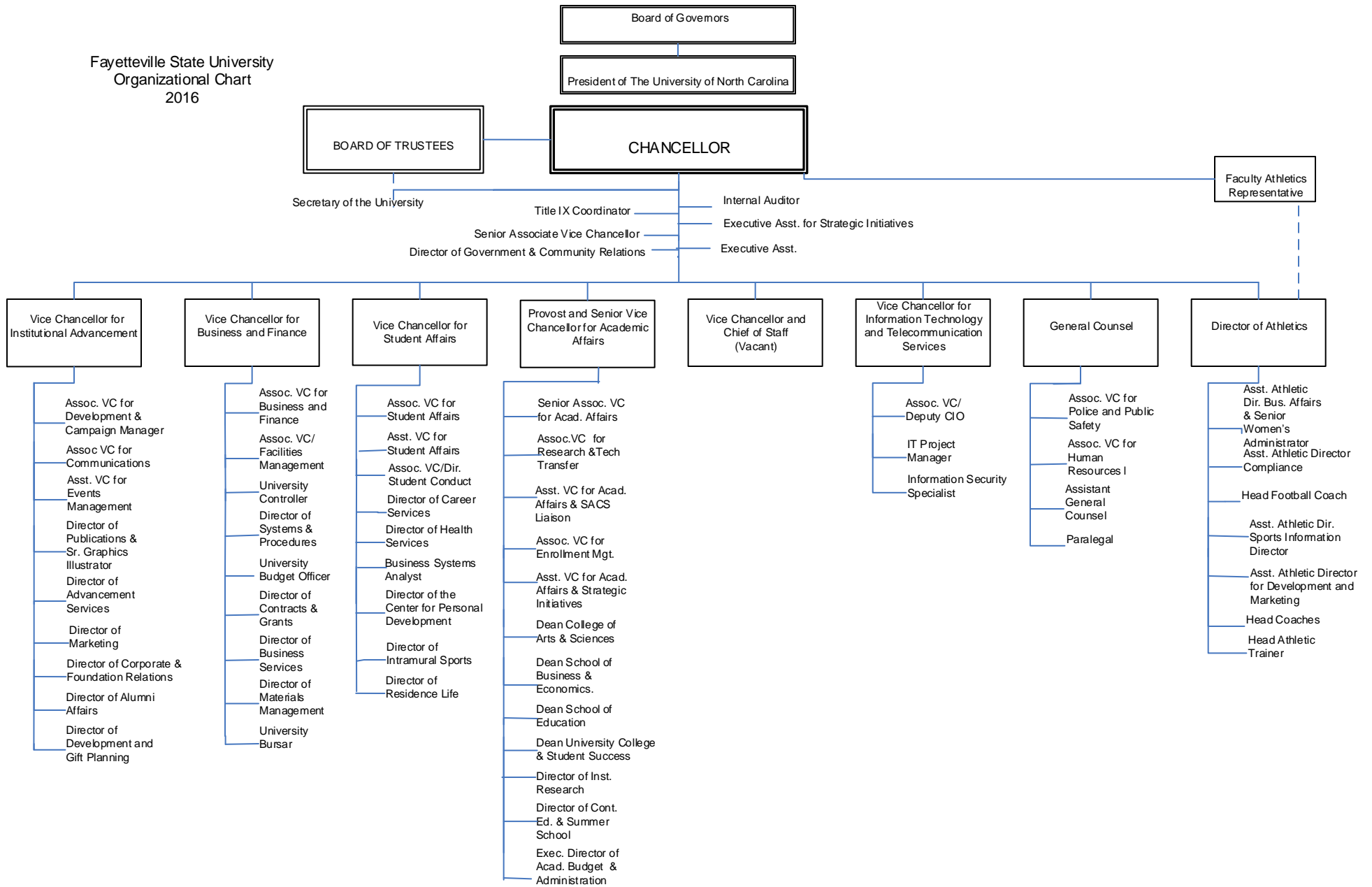
The Academy of Criminal Justice Sciences (ACJS)  
The Adult Education Association, U.S.A.  
American Association for Counseling and Development  
The American Association of Colleges and Schools for Teacher Education (AACTE)  
The American Association of State Colleges and Universities (AASCU)  
The American Council on Education (ACE)  
Association for Continuing and Higher Education (ACHE)  
The Association to Advance Collegiate Schools of Business (AACSB)  
The Central Intercollegiate Athletic Association (CIAA)  
Commission on Collegiate Nursing Education (CCNE)  
Council for Advancement and Support of Education (CASE)  
Council on Social Work Education  
The National Alliance of Business  
National Association for Equal Opportunity in Higher Education (NAFEO)  
National Association for Student Financial Aid Administrators (NASFAA)  
The National Association of Business Teacher Education  
The National Collegiate Athletic Association (NCAA)  
The National Council for Accreditation of Teacher Education (NCATE)  
The National League of Nursing (NLN)  
The North Carolina Association of Colleges and Universities  
North Carolina Day Care Association  
The North Carolina Department of Public Instruction (DPI)  
The Servicemen's Opportunity College (SOC)  
The Southern Association of Colleges and Schools (SACS)  
The Southern Conference of Graduate Schools (SCGS)

## **Centers and Special Programs**

Center for Extended Learning  
Center for Economic Education  
Curriculum Learning Resource Laboratory  
Distance Learning Center  
Early Childhood Learning Center  
Educational Opportunity Centers Program  
Educational Talent Search Program  
Fine Arts Resource Center  
FSU Theatre Company  
Mathematics and Science Education Center  
Office of School Services  
Rosenthal Gallery  
Servicemen's Opportunity College  
Seymour Johnson AFB Center  
Small Business and Technology Development Center  
Fort Bragg-Pope Air Force Base University Center.  
University Testing Services  
Upward Bound Program  
Veterans Affairs

Educational Talent Search Program  
Extended Learning and Summer Programs  
Fine Arts Resource Center  
Fort Bragg Center  
GEAR UP  
Honors Program  
Mathematics and Science Education Center  
Online Degree Completion Programs  
Residence Halls  
Rosenthal Gallery  
Servicemen's Opportunity College  
Small Business and Technology Development Center  
Study Abroad Program  
Summer School Program  
Teaching Licensure Opportunities for Transitioning Soldiers  
University Library  
University Police and Public Safety  
University Testing Services  
Upward Bound Program  
Veterans Affairs

Fayetteville State University  
Organizational Chart  
2016





*Academic Program Inventory, 2016*  
*Fayetteville State University Fayetteville State University*

---

---

Discipline Division, CIP Code, CIP Discipline, Degree Abbreviation, and Degree Program Title

---

**09.0101 Speech Communication and Rhetoric**

09.0101 018 000 A BA Communication

**11.0701 Computer Science**

11.0701 027 000 A BS Computer Science

**13.0401 Educational Leadership and Administration, General**

13.0401 124 047 A MSA School Administration

13.0401 403 048 A EdD Educational Leadership

**13.1202 Elementary Education and Teaching**

13.1202 027 017 A BS Elementary Education (K-6)

**13.1203 Junior High/Intermediate/Middle School Education and Teaching**

13.1203 027 200 A BS Middle Grades (6-9)

**13.1210 Early Childhood Education and Teaching**

13.1210 027 000 A BS Birth-Kindergarten

**13.1299 Teacher Education and Professional Development, Specific Levels and Methods, Other**

13.1299 106 300 A MAT Master of Arts in Teaching

13.1299 109 400 A MEd Master of Education

**13.1314 Physical Education Teaching and Coaching**

13.1314 027 040 A BS Physical Education (K-12)

**16.0905 Spanish Language and Literature**

16.0905 018 000 A BA Spanish

**Academic Program Inventory, 2016**  
**Fayetteville State University**

---

---

Discipline Division, CIP Code, CIP Discipline, Degree Abbreviation, and Degree Program Title

---

**23.0101 English Language and Literature, General**

23.0101 018 000 A BA English, Language and Literature

**24.0101 Liberal Arts and Sciences/Liberal Studies**

24.0101 027 000 A BS Professional Studies

**26.0101 Biology/Biological Sciences, General**

26.0101 027 000 A BS Biology

**27.0101 Mathematics, General**

27.0101 027 000 A BS Mathematics

**40.0501 Chemistry, General**

40.0501 018 000 A BA Chemistry

40.0501 027 000 A BS Chemistry

**42.0101 Psychology, General**

42.0101 027 000 A BS Psychology

42.0101 102 000 A MA Psychology

**43.0104 Criminal Justice/Safety Studies**

43.0104 027 000 A BS Criminal Justice

43.0104 123 000 A MS Criminal Justice

**43.0106 Forensic Science and Technology**

43.0106 027 000 A BS Forensic Science

**43.0202 Fire Services Administration**

43.0202 027 000 A BS Fire and Emergency Services Administration

**Academic Program Inventory, 2016**  
**Fayetteville State University**

---

---

Discipline Division, CIP Code, CIP Discipline, Degree Abbreviation, and Degree Program Title

---

**44.0401 Public Administration**

44.0401 018 000 A BA Intelligence Studies

**44.0701 Social Work**

44.0701 043 000 A BSW Bachelor of Social Work

44.0701 138 000 A MSW Social Work

**45.0701 Geography**

45.0701 018 000 A BA Geography

**45.1001 Political Science and Government, General**

45.1001 018 000 A BA Political Science

**45.1101 Sociology**

45.1101 018 000 A BA Sociology

45.1101 102 000 A MA Sociology

**50.0599 Dramatic/Theatre Arts and Stagecraft, Other**

50.0599 018 543 A BA Theatre

**50.0701 Art/Art Studies, General**

50.0701 018 000 A BA Visual Arts

**50.0901 Music, General**

50.0901 018 000 A BA General Music

**51.0701 Health/Health Care Administration/Management**

51.0701 027 000 A BS Healthcare Administration

**51.3801 Registered Nursing/Registered Nurse**

51.3801 039 000 A BSN Nursing (RN/BSN) (Jt. Program with UNC-Pembroke)

51.3801 039 000 A BSN Nursing

*Academic Program Inventory, 2016*  
*Fayetteville State University*

---

---

Discipline Division, CIP Code, CIP Discipline, Degree Abbreviation, and Degree Program Title

---

**52.0201 Business Administration and Management, General**

52.0201 027 000 A BS Business Administration

52.0201 107 000 A MBA Business Administration

**52.0301 Accounting**

52.0301 027 000 A BS Accounting

**52.0801 Finance, General**

52.0801 027 000 A BS Banking and Finance

**52.1201 Management Information Systems, General**

52.1201 027 000 A BS Management Information Systems

**54.0101 History, General**

54.0101 018 000 A BA History

It's all about your vision for the future and how Fayetteville State University will help you attain it. We believe in your ability to make a positive impact with an outstanding education as your springboard. We believe in results, and we know how to foster achievement. Whether you are in high school, already working, or transferring from another institution, Fayetteville State University is a university that inspires you to set high expectations for yourself.

## Students



## Narrative Summary of Student Data

### Fall 2016

**First Time Freshmen Applications:** 2,733 first time freshmen were accepted from a pool of 4,611 applicants for a 59% acceptance rate.

**Undergraduate Transfer Applications:** 1,306 undergraduate transfer students were accepted from a pool of 1,457 applicants for an 90% acceptance rate.

**Graduate Applications:** 364 graduate applicants were accepted from a pool of 400 applicants for a 91% acceptance rate.

**First Time Freshmen Enrolled:** 646 first time freshmen were enrolled from a pool of 2,620 first-time freshman students who were actually accepted. Males represented 35% of first time enrolled freshmen, and females represented 65%. Males represented 32% of the total student population and females comprised 68%.

Ninety-five percent of first time freshmen enrolled had in-state residency. Ninety-six percent of total enrolled students had in-state residency. Whites and Blacks composed 83% percent of first time freshmen enrolled. Blacks composed 78% percent of the first time enrolled freshmen, higher than the 62% of Blacks representing total enrollment for the same period.

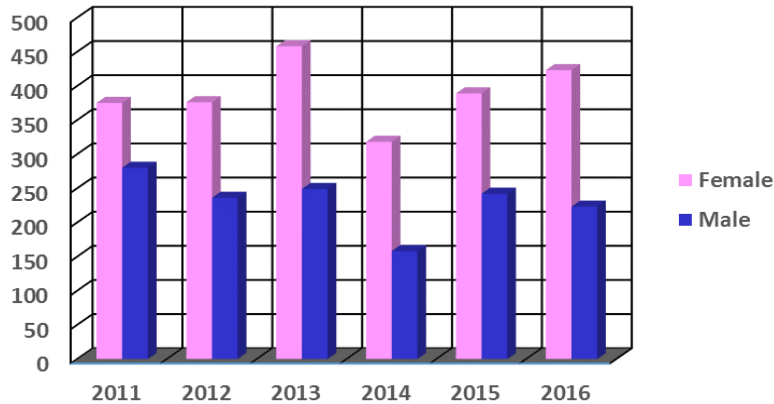
The typical first time freshmen enrolled student was female (65%), under 20 (95%), in-state (95%), and Black (78%). Most first time enrolled freshmen (54%) had an SAT score of 1000 or less and a HSGPA ranging between 2.01 and 3.50 (63%).

**Total Student Enrollment:** The total enrollment of 6,223 increased by 119 (2.0%) from Fall 2015. During Fall 2011 - Fall 2016 total enrollment ranged from 5,930 to 6,223.

Sixty-eight percent of the student population was female. Black enrollment was 62% and White individuals represented 21%. Ninety-six percent of the students were from North Carolina, 50% were non-traditional students over the age of 24, and 89% were undergraduates. Seventy-five percent of all students were commuters. The typical enrolled student was female (68%), under 25 (50%), in-state (96%), and Black (62%).

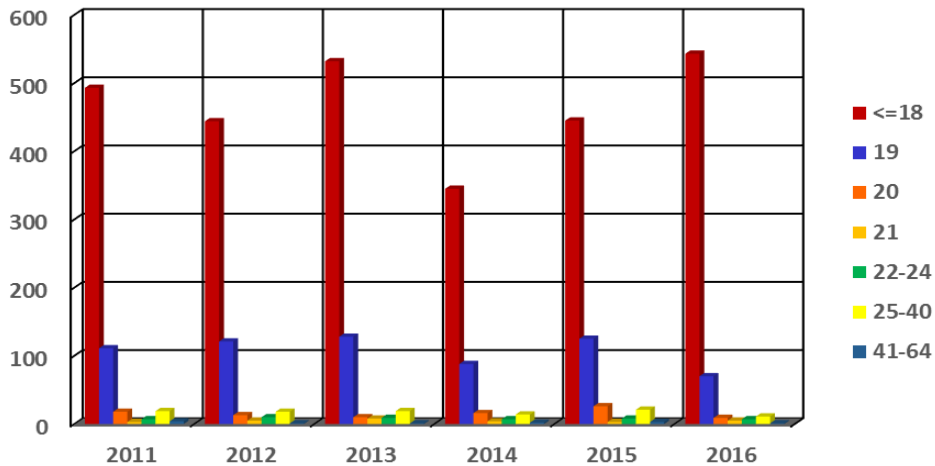
**Degrees Awarded 2015-2016:** Top three undergraduate degrees awarded were Nursing (153), Criminal Justice (129), and Psychology (127). The top three graduate degrees awarded were Master of Social Work (78), Master of School Administration (22), and Master of Business Administration (20).

## First-time Freshmen Enrolled Fall 2011-2016 By Gender



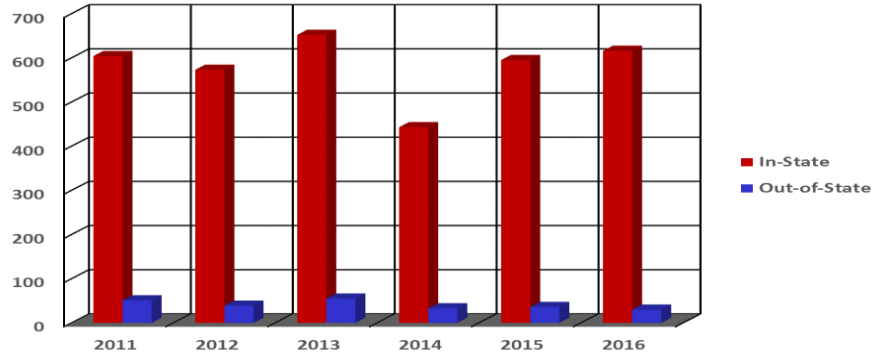
Gender	2011	2012	2013	2014	2015	2016
Female	375	376	458	318	389	423
Male	280	236	249	158	242	223
<b>Total</b>	<b>655</b>	<b>612</b>	<b>707</b>	<b>476</b>	<b>631</b>	<b>646</b>

## By Age



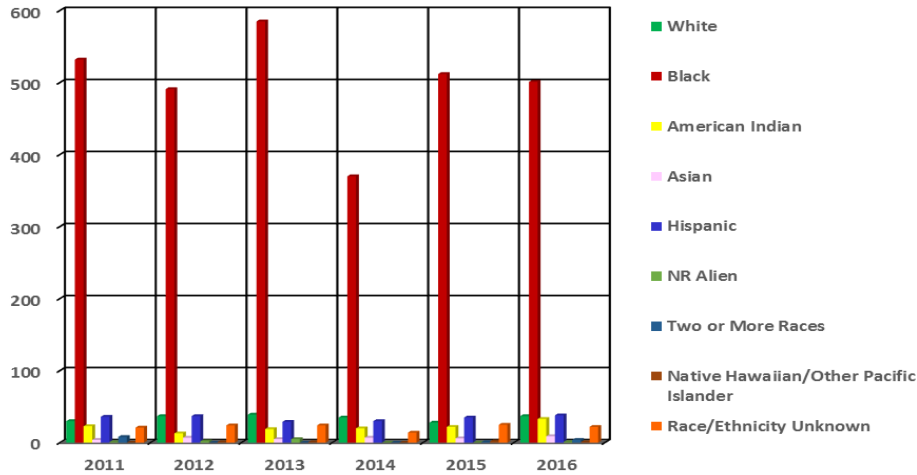
Age	2011	2012	2013	2014	2015	2016
<=18	493	444	532	345	445	543
19	111	121	128	88	125	70
20	18	13	10	16	26	9
21	3	5	8	4	3	5
22-24	7	10	9	7	8	7
25-40	19	18	19	14	21	11
41-64	4	1	1	2	3	1
<b>Total</b>	<b>655</b>	<b>612</b>	<b>707</b>	<b>476</b>	<b>631</b>	<b>646</b>

## First-time Freshmen Enrolled Fall 2011-2016 By Residency



Residency	2011	2012	2013	2014	2015	2016
In-State	604	573	652	443	595	616
Out-of-State	51	39	55	33	36	30
<b>Total</b>	<b>655</b>	<b>612</b>	<b>707</b>	<b>476</b>	<b>631</b>	<b>646</b>

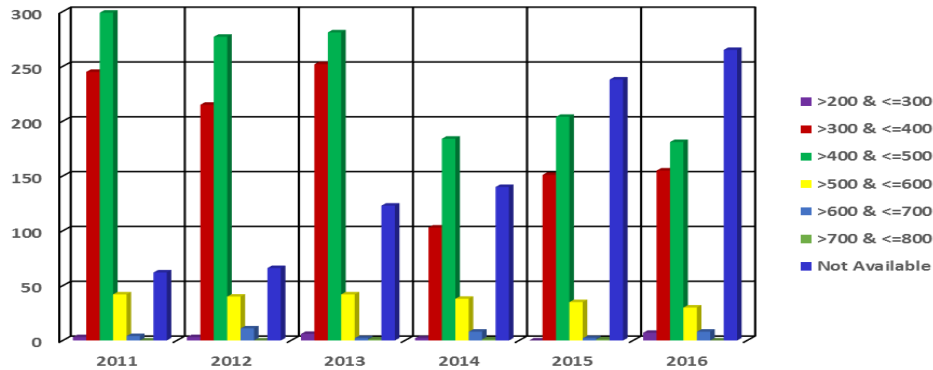
## By Race



Race	2011	2012	2013	2014	2015	2016
White	30	37	39	35	28	37
Black	532	491	585	370	512	501
American Indian	23	13	19	20	22	33
Asian	4	7	5	7	6	9
Hispanic	36	37	29	30	35	38
NR Alien	1	2	5	0	0	1
Two or More Races	8	0	0	0	1	4
Native Hawaiian/Other Pacific Islander	0	1	1	0	2	1
Race/Ethnicity Unknown	21	24	24	14	25	22
<b>Total</b>	<b>655</b>	<b>612</b>	<b>707</b>	<b>476</b>	<b>631</b>	<b>646</b>

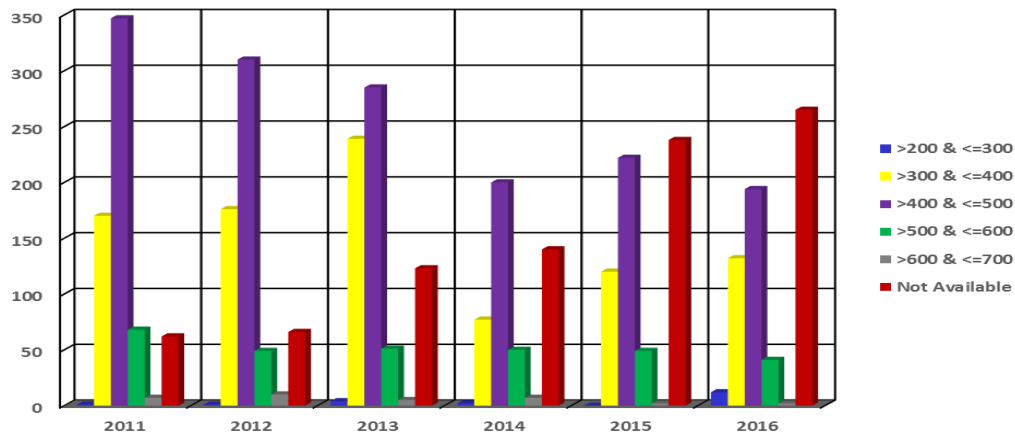


## First-time Freshmen Enrolled Fall 2011-2016 By SAT Verbal



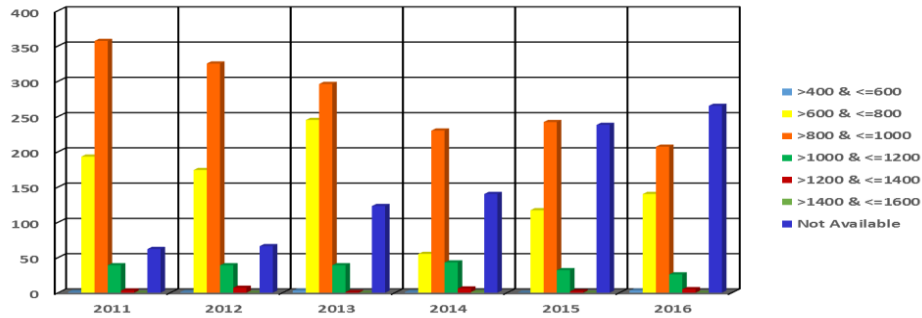
SAT Verbal	2011	2012	2013	2014	2015	2016
>200 & <=300	3	3	6	2	0	7
>300 & <=400	245	215	252	103	151	155
>400 & <=500	299	277	281	184	204	181
>500 & <=600	42	40	42	38	35	30
>600 & <=700	4	11	2	8	2	8
>700 & <=800	0	0	1	1	1	0
Not Available	62	66	123	140	238	265
<b>Total</b>	<b>655</b>	<b>612</b>	<b>707</b>	<b>476</b>	<b>631</b>	<b>646</b>

## By SAT Math



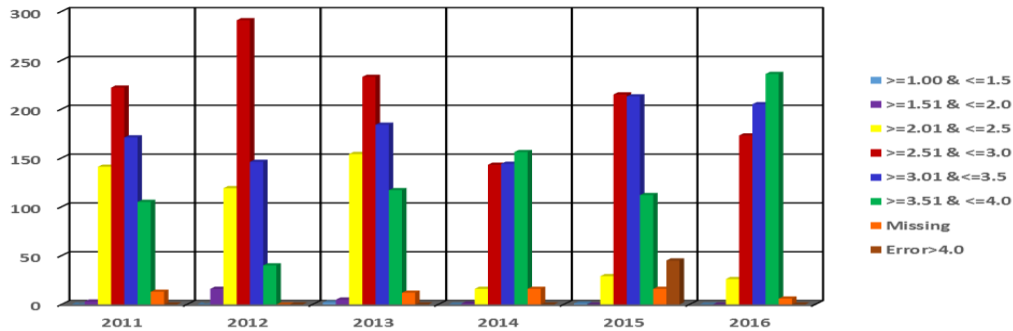
SAT Math	2011	2012	2013	2014	2015	2016
>200 & <=300	1	1	4	2	0	12
>300 & <=400	170	176	239	77	120	132
>400 & <=500	347	310	285	200	222	194
>500 & <=600	68	49	51	50	49	41
>600 & <=700	7	10	5	7	2	2
Not Available	62	66	123	140	238	265
<b>Total</b>	<b>655</b>	<b>612</b>	<b>707</b>	<b>476</b>	<b>631</b>	<b>646</b>

## First-time Freshmen Enrolled Fall 2011-2016 By SAT Combined



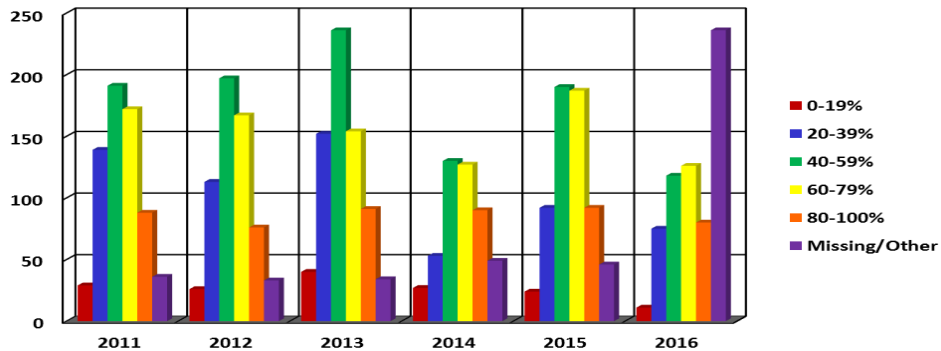
SAT Combined	2011	2012	2013	2014	2015	2016
>400 & <=600	1	1	3	1	0	3
>600 & <=800	193	174	245	55	117	140
>800 & <=1000	357	325	296	230	242	207
>1000 & <=1200	39	39	39	43	32	26
>1200 & <=1400	3	7	1	6	2	5
>1400 & <=1600	0	0	0	1	0	0
Not Available	62	66	123	140	238	265
<b>Total</b>	<b>655</b>	<b>612</b>	<b>707</b>	<b>476</b>	<b>631</b>	<b>646</b>
<b>Average SAT</b>	<b>861</b>	<b>860</b>	<b>843</b>	<b>889</b>	<b>853</b>	<b>851</b>

## By High School GPA



High School GPA	2011	2012	2013	2014	2015	2016
>=1.00 & <=1.5	0	0	2	0	1	0
>=1.51 & <=2.0	3	16	5	1	0	0
>=2.01 & <=2.5	141	119	154	16	29	26
>=2.51 & <=3.0	222	291	233	143	215	173
>=3.01 & <=3.5	171	146	184	144	213	205
>=3.51 & <=4.0	105	40	117	156	112	236
Missing	13	0	12	16	16	6
Error>4.0	0	0	0	0	45	0
<b>Total</b>	<b>655</b>	<b>612</b>	<b>707</b>	<b>476</b>	<b>631</b>	<b>646</b>
<b>Average HS GPA</b>	<b>2.92</b>	<b>2.94</b>	<b>2.95</b>	<b>3.25</b>	<b>3.18</b>	<b>3.30</b>

## First-time Freshmen Enrolled Fall 2011-2016 By High School Class Rank in Quintiles

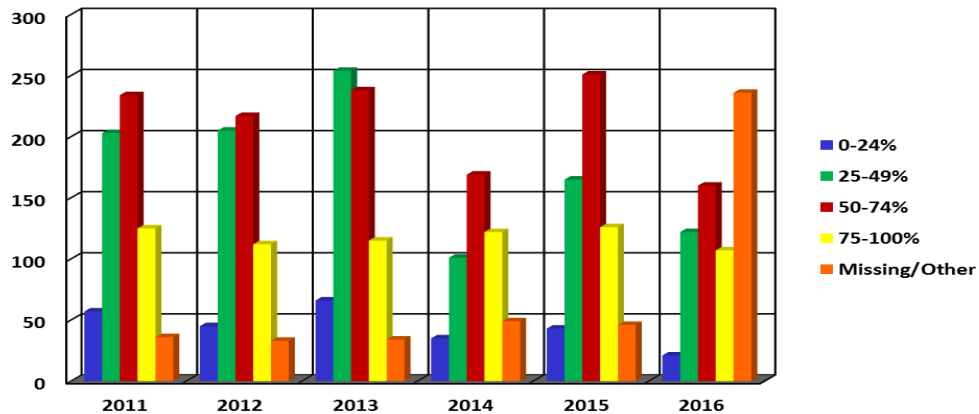


Quintile Rank	2011	2012	2013	2014	2015	2016
0-19%	29	26	40	27	24	11
20-39%	139	113	152	53	92	75
40-59%	191	197	236	130	190	118
60-79%	172	167	154	127	187	126
80-100%	88	76	91	90	92	80
Missing/Other	36	33	34	49	46	236
<b>Total</b>	<b>655</b>	<b>612</b>	<b>707</b>	<b>476</b>	<b>631</b>	<b>646</b>

19%  
-39%  
-59%  
-79%  
-100%

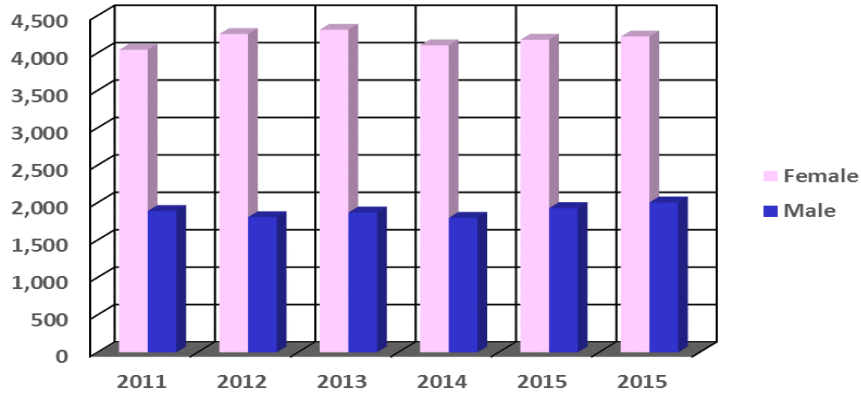
issing/Other

### By High School Class Rank in Quartiles



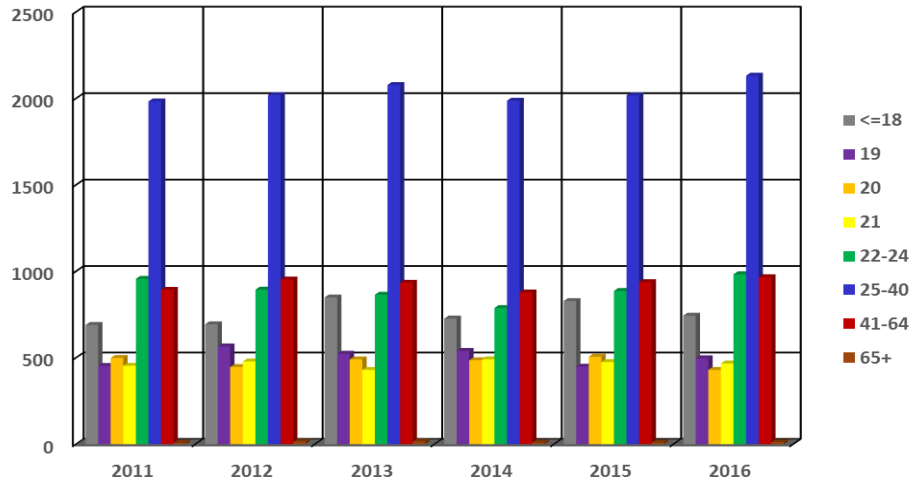
Quartile Rank	2011	2012	2013	2014	2015	2016
0-24%	57	45	66	35	43	21
25-49%	203	205	254	101	165	122
50-74%	234	217	238	169	251	160
75-100%	125	112	115	122	126	107
Missing/Other	36	33	34	49	46	236
<b>Total</b>	<b>655</b>	<b>612</b>	<b>707</b>	<b>476</b>	<b>631</b>	<b>646</b>

## Total Student Enrollment for the Fall 2011-2016 By Gender



Gender	2011	2012	2013	2014	2015	2016
Female	4,042	4,254	4,311	4,102	4,177	4,220
Male	1,888	1,806	1,868	1,797	1,927	2,003
Total	5,930	6,060	6,179	5,899	6,104	6,223

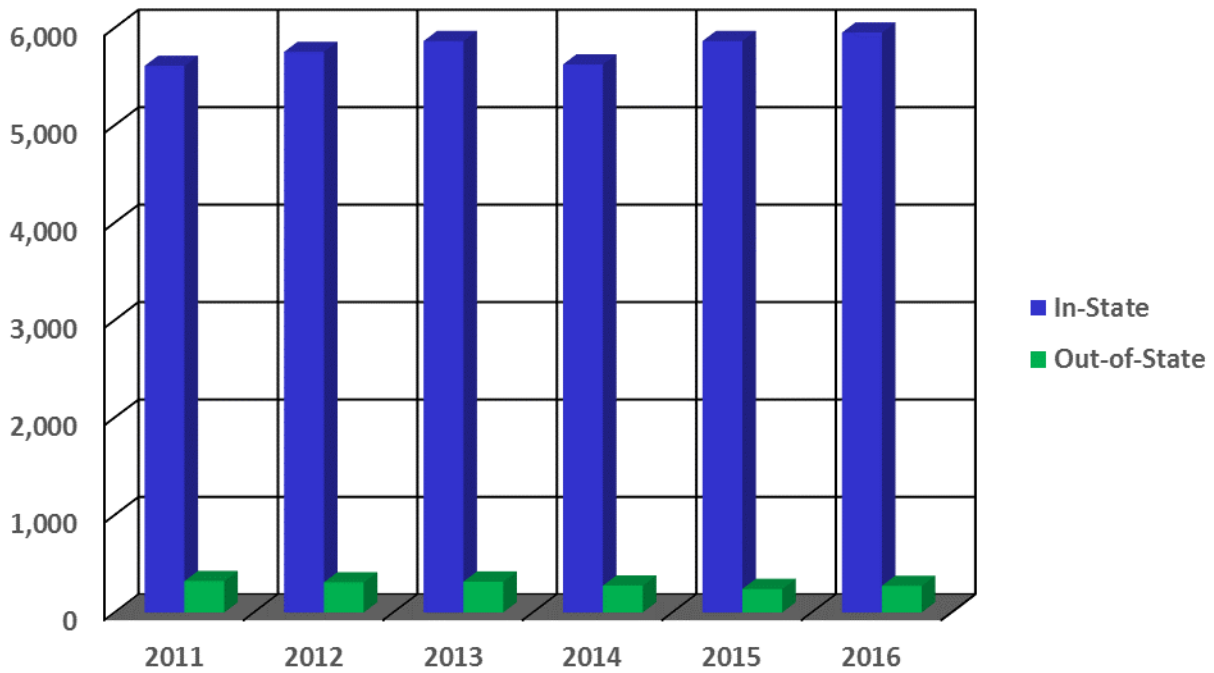
## By Age



Age	2011	2012	2013	2014	2015	2016
<=18	689	693	848	726	827	743
19	452	565	523	539	448	496
20	498	446	490	485	505	429
21	453	478	429	490	474	466
22-24	956	893	864	787	886	982
25-40	1,982	2,019	2,077	1,986	2,017	2,131
41-64	892	952	933	877	937	965
65+	8	14	15	9	10	11
Total	5,930	6,060	6,179	5,899	6,104	6,223

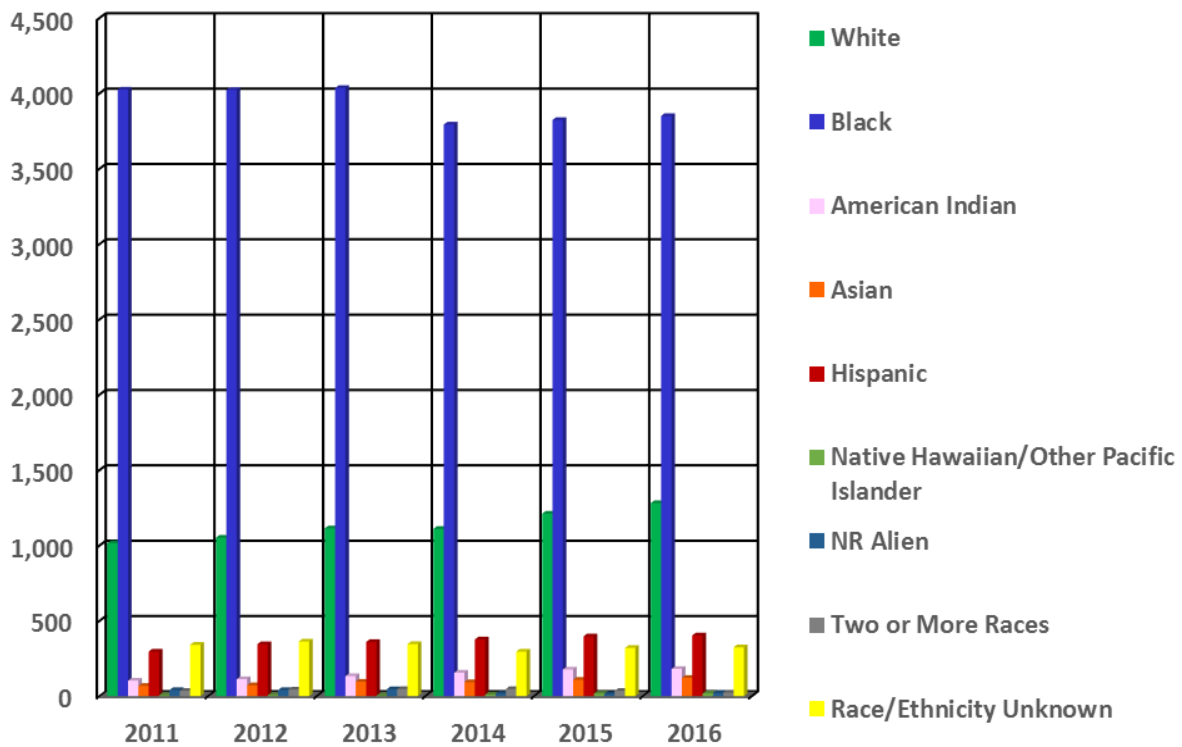
## Total Student Enrollment for the Fall 2011-2016 By Residency

---



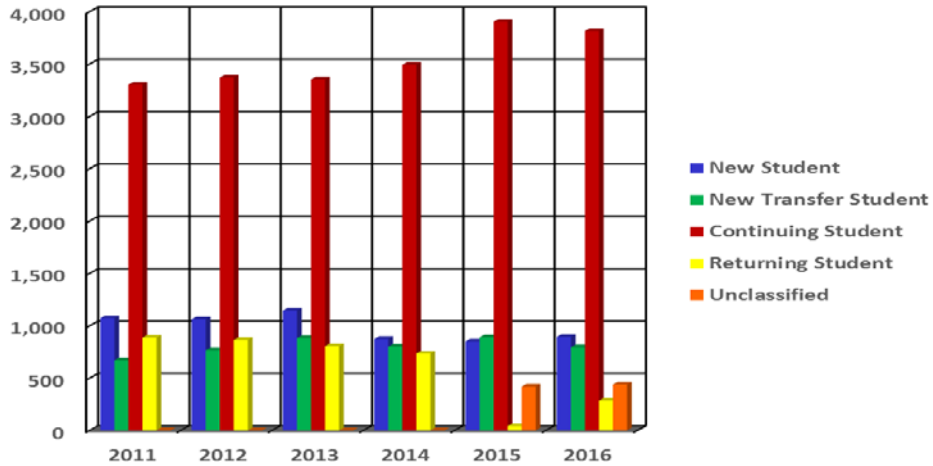
Residency	2011	2012	2013	2014	2015	2016
<b>In-State</b>	<b>5,609</b>	<b>5,752</b>	<b>5,864</b>	<b>5,624</b>	<b>5,864</b>	<b>5,986</b>
<b>Out-of-State</b>	<b>321</b>	<b>308</b>	<b>315</b>	<b>275</b>	<b>240</b>	<b>237</b>
<b>Total</b>	<b>5,930</b>	<b>6,060</b>	<b>6,179</b>	<b>5,899</b>	<b>6,104</b>	<b>6223</b>

## Total Student Enrollment for the Fall 2011-2016 By Race



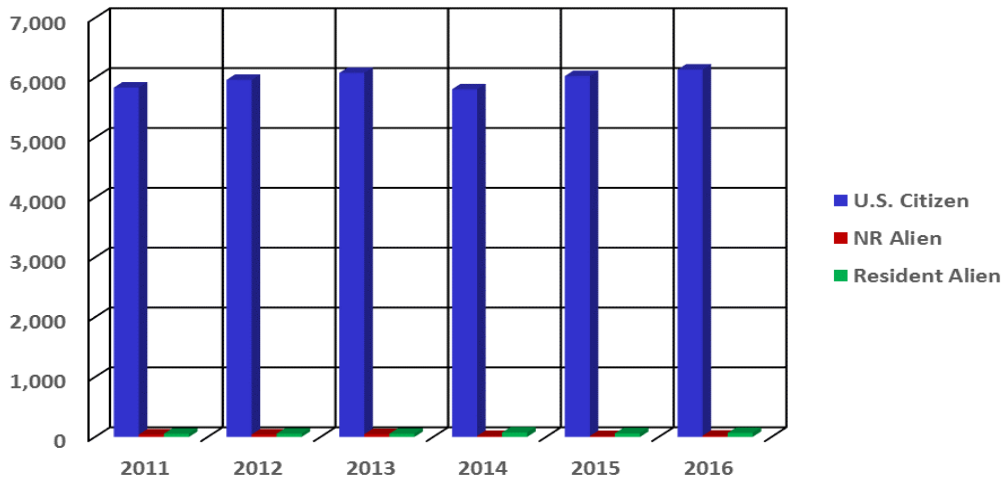
Race	2011	2012	2013	2014	2015	2016
White	1,015	1,052	1,113	1,110	1,211	1,281
Black	4,025	4,023	4,035	3,793	3,823	3,850
American Indian	103	113	133	156	177	181
Asian	68	72	96	93	109	121
Hispanic	296	345	359	376	397	403
Native Hawaiian/Other Pacific Islander	6	7	4	11	17	18
NR Alien	41	41	46	17	15	21
Two or More Races	35	44	47	47	35	24
Race/Ethnicity Unknown	341	363	346	296	320	324
<b>Total</b>	<b>5,930</b>	<b>6,060</b>	<b>6,179</b>	<b>5,899</b>	<b>6,104</b>	<b>6,223</b>

## Total Student Enrollment for the Fall 2011-2016 By Status



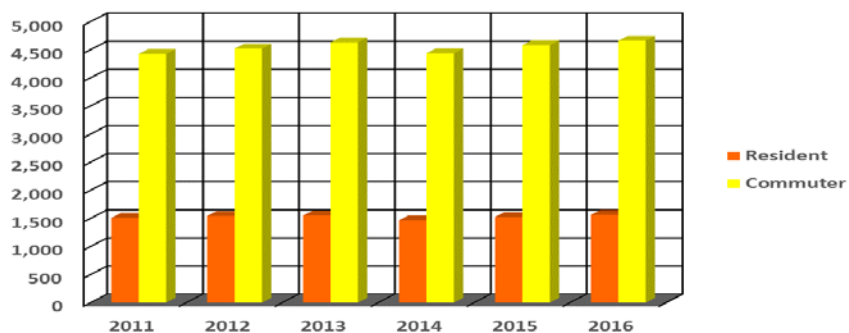
Status	2011	2012	2013	2014	2015	2016
New Student	1,071	1,061	1,143	873	847	894
New Transfer Student	670	766	881	799	888	868
Continuing Student	3,303	3,369	3,352	3,493	3,614	3,739
Returning Student	885	864	803	734	335	283
Unclassified	1	0	0	0	420	439
<b>Total</b>	<b>5,930</b>	<b>6,060</b>	<b>6,179</b>	<b>5,899</b>	<b>6,104</b>	<b>6,223</b>

## By Citizenship



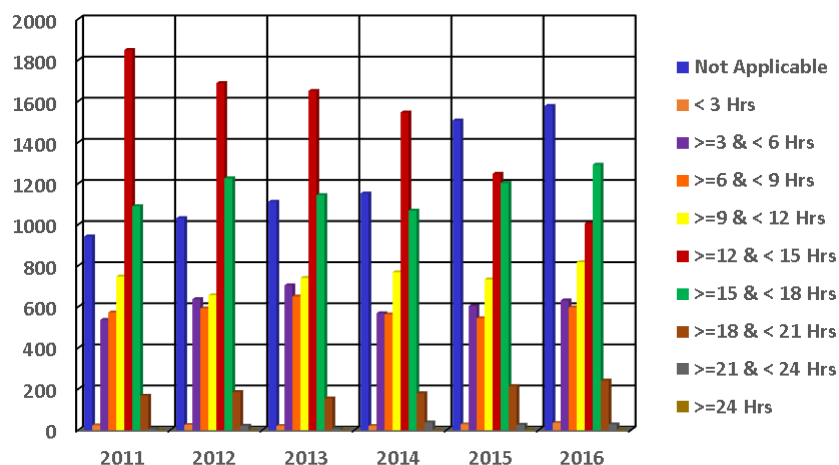
Citizenship	2011	2012	2013	2014	2015	2016
U.S. Citizen	5,836	5,964	6,081	5,807	6,028	6,135
NR Alien	41	41	46	17	15	21
Resident Alien	53	55	52	75	61	67
<b>Total</b>	<b>5,930</b>	<b>6,060</b>	<b>6,179</b>	<b>5,899</b>	<b>6,104</b>	<b>6,223</b>

## Total Student Enrollment for the Fall 2010-2015 By Housing Status



Housing Status	2011	2012	2013	2014	2015	2016
Resident	1,508	1,543	1,550	1,465	1,511	1,548
Commuter	4,422	4,517	4,629	4,434	4,593	4,675
<b>Total</b>	<b>5,930</b>	<b>6,060</b>	<b>6,179</b>	<b>5,899</b>	<b>6,104</b>	<b>6,223</b>

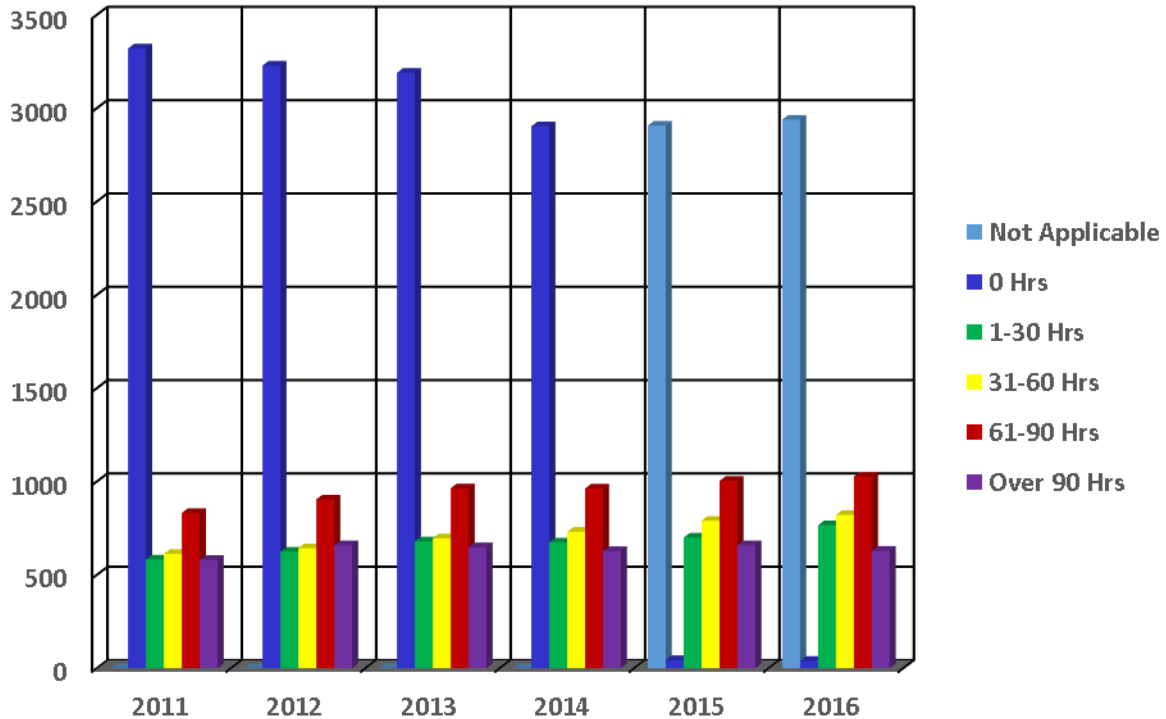
## By Semester Credit Hours



Semester Hours	2011	2012	2013	2014	2015	2016
Not Applicable	942	1,031	1,111	1,151	1,506	1,577
< 3 Hrs	23	25	20	20	28	35
>=3 & < 6 Hrs	536	637	704	568	603	631
>=6 & < 9 Hrs	572	592	650	563	544	597
>=9 & < 12 Hrs	747	656	740	768	733	817
>=12 & < 15 Hrs	1,849	1,688	1,650	1,545	1,247	1,005
>=15 & < 18 Hrs	1,089	1,225	1,143	1,068	1,202	1,291
>=18 & < 21 Hrs	167	185	154	179	214	241
>=21 & < 24 Hrs	5	21	7	37	26	28
>=24 Hrs	0	0	0	0	1	1
<b>Total</b>	<b>5,930</b>	<b>6,060</b>	<b>6,179</b>	<b>5,899</b>	<b>6,104</b>	<b>6,223</b>

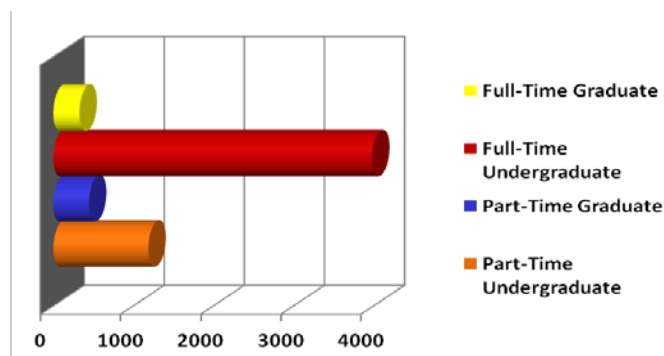


## Total Student Enrollment for the Fall 2011-2016 By Transfer Hours Applied Towards Degree



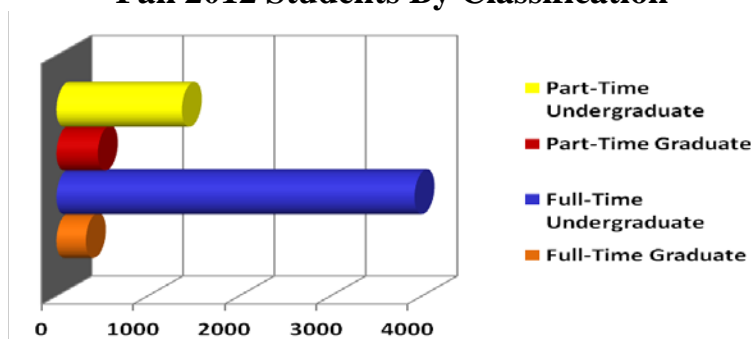
Transfer Hours	2011	2012	2013	2014	2015	2016
Not Applicable	0	0	0	0	2,907	2,939
0 Hrs	3,321	3,229	3,190	2,903	44	40
1-30 Hrs	583	625	680	674	700	766
31-60 Hrs	613	643	696	731	790	821
61-90 Hrs	832	904	964	963	1,004	1,027
Over 90 Hrs	581	659	649	628	659	630
<b>Total</b>	<b>5,930</b>	<b>6,060</b>	<b>6,179</b>	<b>5,899</b>	<b>6,104</b>	<b>6,223</b>

## Fall 2011 Students By Classification



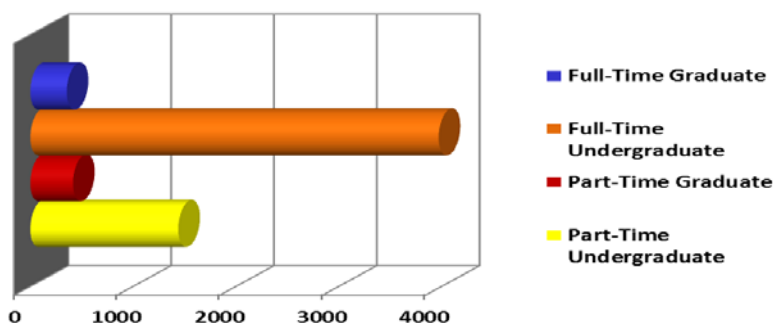
Classification	Full-Time		Part-Time		Total	
	#	%	#	%	#	%
First-time Freshmen	647	98.8	8	1.2	655	11.0
Freshmen	377	80.7	90	19.3	467	7.9
Sophomores	687	88.1	93	11.9	780	13.2
Juniors	765	81.9	169	18.1	934	15.8
Seniors	1,440	68.8	654	31.2	2,094	35.3
Special/Unclassified	61	26.3	171	73.7	232	3.9
Undergraduate	3,977	77.0	1,185	23.0	5,162	87.0
Graduate Students	325	42.3	443	57.7	768	13.0
<b>Total Students</b>	<b>4,302</b>	<b>72.5</b>	<b>1,628</b>	<b>27.5</b>	<b>5,930</b>	<b>100.0</b>

## Fall 2012 Students By Classification



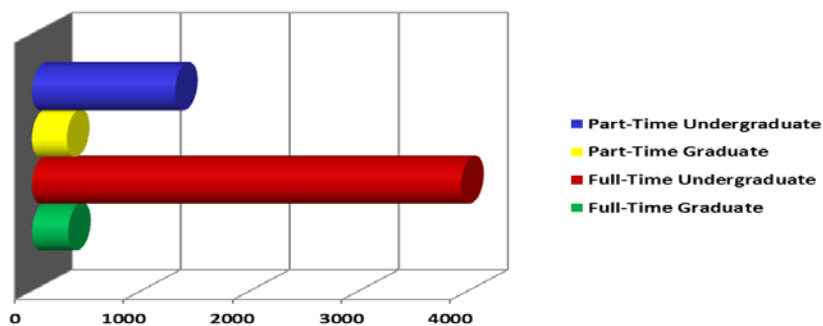
Classification	Full-Time		Part-Time		Total	
	#	%	#	%	#	%
First-time Freshmen	600	98.0	12	2.0	612	10.1
Freshmen	385	82.3	83	17.7	468	7.7
Sophomores	758	88.7	97	11.3	855	14.1
Juniors	779	78.5	213	21.5	992	16.4
Seniors	1,332	63.9	753	36.1	2,085	34.4
Special/Unclassified	62	22.5	213	77.5	275	4.5
Undergraduate	3,916	74.1	1,371	25.9	5,287	87.2
Graduate Students	321	41.5	452	58.5	773	12.8
<b>Total Students</b>	<b>4,237</b>	<b>70.0</b>	<b>1,823</b>	<b>30.1</b>	<b>6,060</b>	<b>100.0</b>

## Fall 2013 Students By Classification



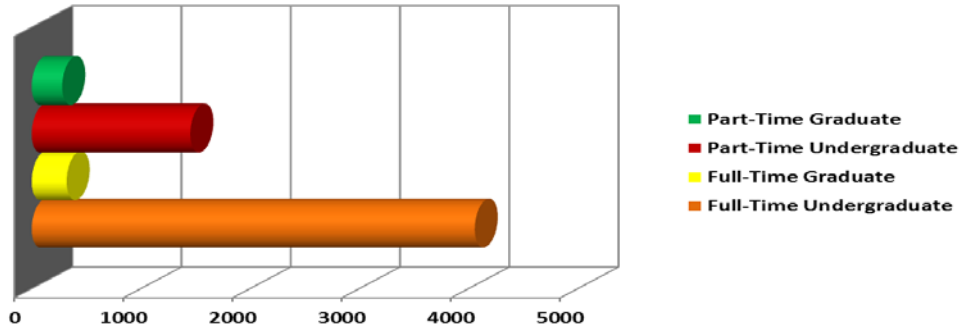
Classification	Full-Time		Part-Time		Total	
	#	%	#	%	#	%
First-time Freshmen	689	97.5	18	2.5	707	11.4
Freshmen	343	83.1	70	16.9	413	6.7
Sophomores	722	85.5	122	14.5	844	13.7
Juniors	877	79.0	233	21.0	1,110	18.0
Seniors	1,270	63.4	733	36.6	2,003	32.4
Special/Unclassified	70	21.0	263	79.0	333	5.4
Undergraduate	3,971	73.4	1,439	26.6	5,410	87.6
Graduate Students	354	46.0	415	54.0	769	12.4
<b>Total Students</b>	<b>4,325</b>	<b>70.0</b>	<b>1,854</b>	<b>30.0</b>	<b>6,179</b>	<b>100.0</b>

## Fall 2014 Students By Classification



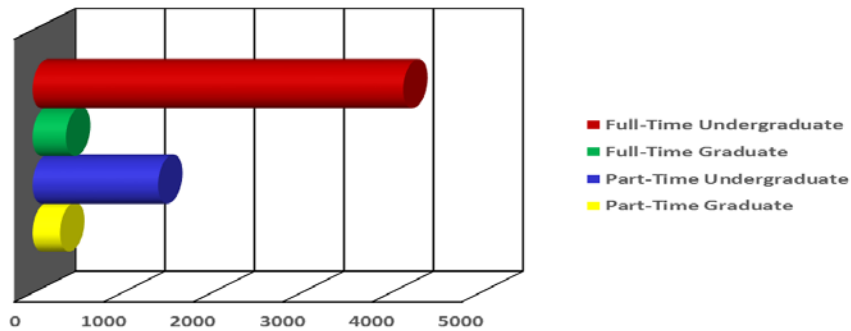
Classification	Full-Time		Part-Time		Total	
	#	%	#	%	#	%
First-time Freshmen	468	98.3	8	1.7	476	8.1
Freshmen	333	84.9	59	15.1	392	6.6
Sophomores	806	88.8	102	11.2	908	15.4
Juniors	850	79.0	226	21.0	1,076	18.2
Seniors	1,331	66.2	679	33.8	2,010	34.1
Special/Unclassified	147	38.2	238	61.8	385	6.5
Undergraduate	3,935	75.0	1,312	25.0	5,247	88.9
Graduate Students	332	50.9	320	49.1	652	11.1
<b>Total Students</b>	<b>4,267</b>	<b>72.3</b>	<b>1,632</b>	<b>27.7</b>	<b>5,899</b>	<b>100.0</b>

## Fall 2015 Students By Classification



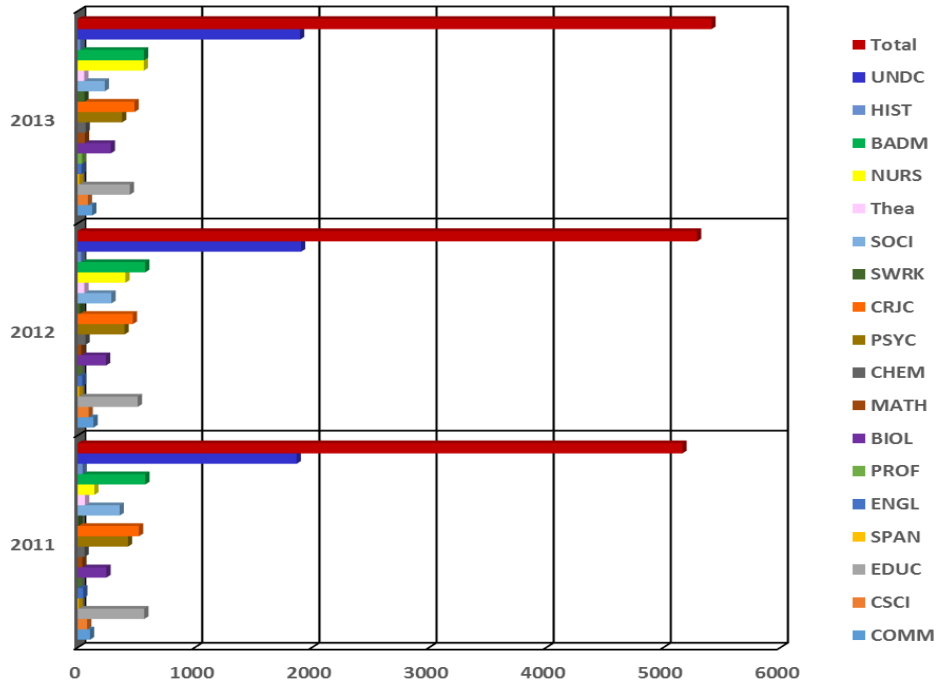
Classification	Full-Time		Part-Time		Total	
	#	%	#	%	#	%
First-time Freshmen	627	99.4	4	0.6	631	10.3
Freshmen	257	79.1	68	20.9	325	5.3
Sophomores	759	86.2	122	13.8	881	14.4
Juniors	876	77.5	255	22.5	1,131	18.5
Seniors	1,361	64.2	758	35.8	2,119	34.7
Special/Unclassified	175	41.8	244	58.2	419	6.7
Undergraduate	4,055	73.6	1,451	26.4	5,506	90.2
Graduate Students	319	53.3	279	46.7	598	9.8
<b>Total Students</b>	<b>4,374</b>	<b>71.7</b>	<b>1,730</b>	<b>28.3</b>	<b>6,104</b>	<b>100.0</b>

## Fall 2016 Students By Classification



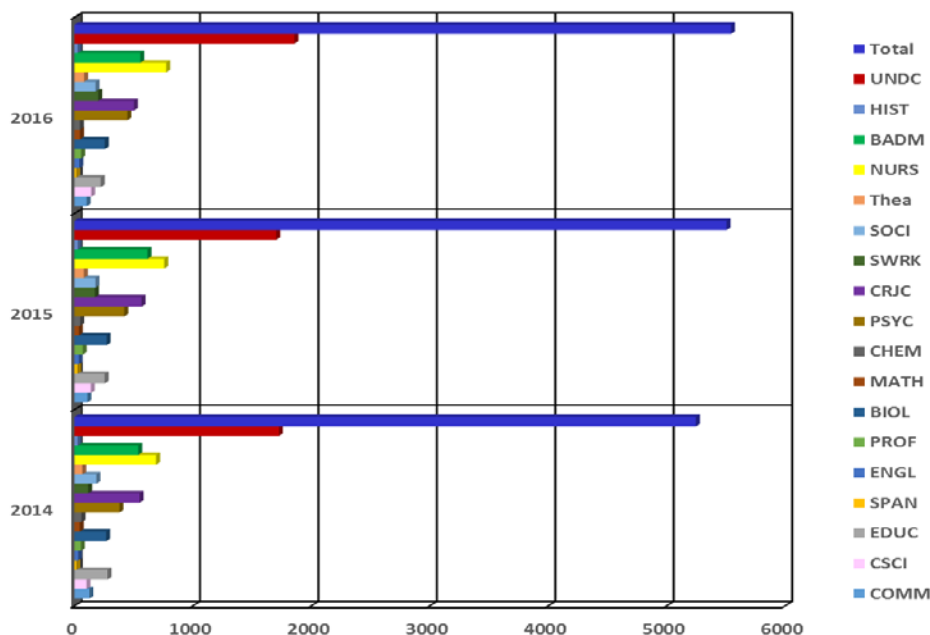
Classification	Full-Time		Part-Time		Total	
	#	%	#	%	#	%
First-time Freshmen	640	98.9	7	1.1	647	10.4
Freshmen	340	55.9	268	44.0	608	9.8
Sophomores	799	86.9	120	13.1	919	14.8
Juniors	973	80.1	239	19.7	1,212	19.5
Seniors	1,389	65.2	743	34.8	2,132	34.3
Special/Unclassified	0	0.0	25	100.0	25	0.4
Undergraduate	4,141	74.7	1,402	25.3	5,540	89.0
Graduate Students	373	54.9	310	45.1	683	11.1
<b>Total Students</b>	<b>4,514</b>	<b>72.5</b>	<b>1,709</b>	<b>27.5</b>	<b>6,223</b>	<b>100.0</b>

## Fall 2011-2013 Enrolled Students Undergraduate By Major



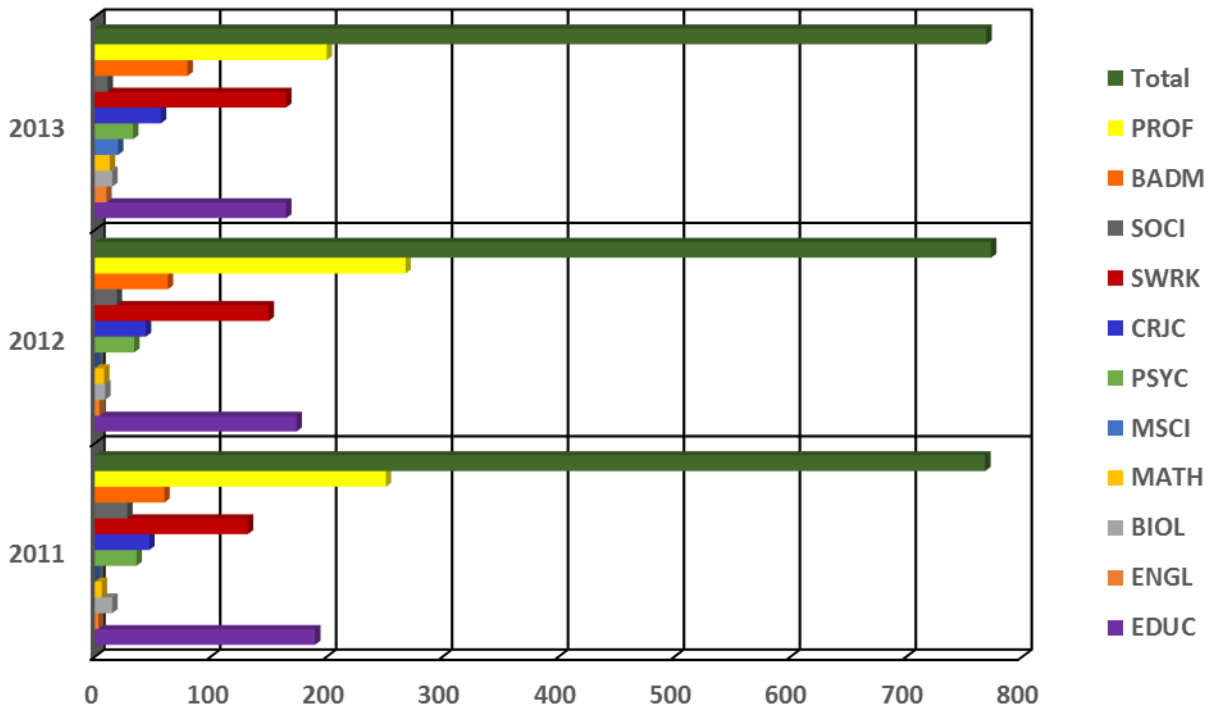
Major	Title	2011	2012	2013
COMM	Communication Studies/Speech Comm	105	135	124
CSCI	Computer Science	81	94	87
EDUC	Education	568	513	445
SPAN	Spanish Language	8	11	12
ENGL	English Language	47	39	32
PROF	Professional Studies	0	0	38
BIOL	Biology	245	242	283
MATH	Mathematics	40	31	62
CHEM	Chemistry	59	67	68
PSYC	Psychology	429	400	379
CRJC	Criminal Justice/Forensic Science/Fire Service	523	471	485
SWRK	Social Work/Public Admin.	6	20	58
SOCI	Sociology/Geography/Political Science	358	288	231
Thea	Dramatic/Theatre Arts and Stagecraft, Other	63	57	56
NURS	Nursing/Healthcare Admin.	142	407	564
BADM	Business Administration	577	576	566
HIST	History	42	29	21
UNDC	Undecided	1,869	1,907	1,899
<b>Total</b>		<b>5,162</b>	<b>5,287</b>	<b>5,410</b>

## Fall 2014-2016 Enrolled Students Undergraduate By Major



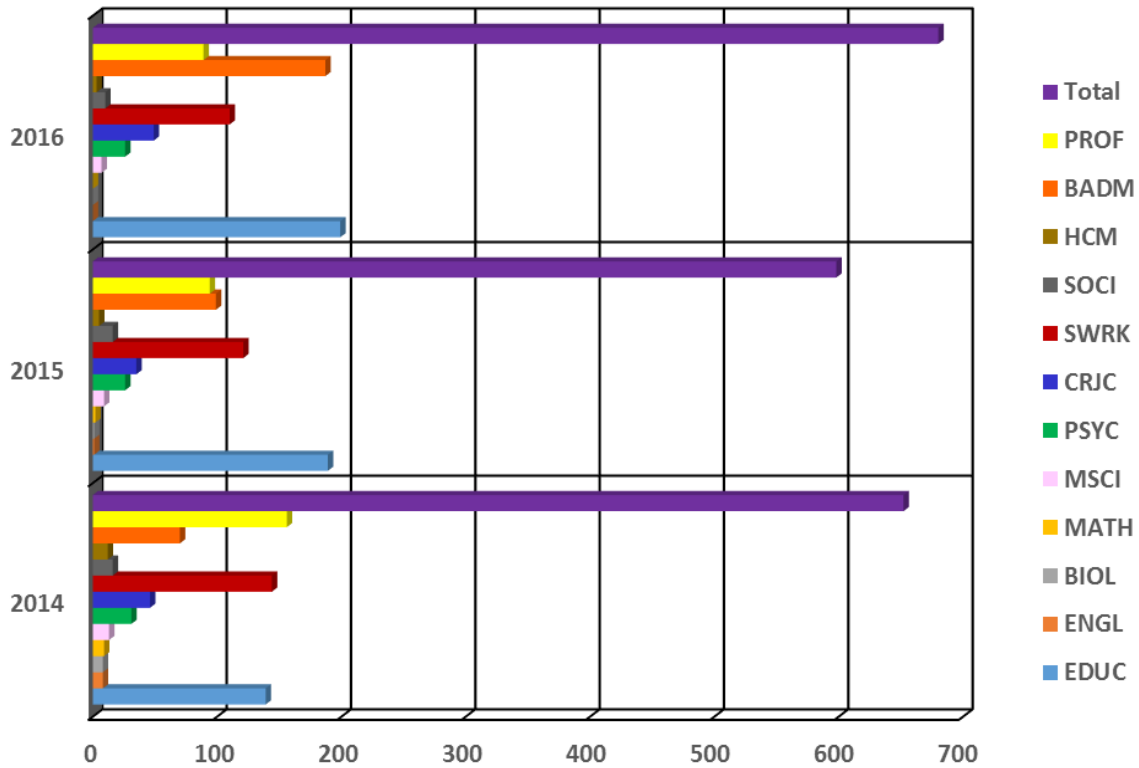
Major	Title	2014	2015	2016
COMM	Communication Studies/Speech Comm	125	109	103
CSCI	Computer Science	102	138	141
EDUC	Education	278	255	222
SPAN	Spanish Language	15	24	14
ENGL	English Language	31	36	41
PROF	Professional Studies	53	70	56
BIOL	Biology	267	271	256
MATH	Mathematics	44	37	46
CHEM	Chemistry	59	48	45
PSYC	Psychology	379	420	446
CRJC	Criminal Justice/Forensic Science/Fire Service	549	566	502
SWRK	Social Work/Public Admin.	115	172	200
SOCI	Sociology/Geography/Political Science	185	177	178
Thea	Dramatic/Theatre Arts and Stagecraft, Other	66	79	81
NURS	Nursing/Healthcare Admin.	689	758	774
BADM	Business Administration	538	616	555
HIST	History	26	27	26
UNDC	Undecided	1,726	1,703	1,854
<b>Total</b>		<b>5,247</b>	<b>5,506</b>	<b>5,540</b>

## Fall 2011-2013 Enrolled Students Graduate By Major



Major	Title	2011	2012	2013
EDUC	Education	190	174	165
ENGL	English Language	3	4	10
BIOL	Biology	15	9	15
MATH	Mathematics	6	8	13
MSCI	Military Behavioral Health Graduate Certificate	0	0	20
PSYC	Psychology	36	34	33
CRJC	Criminal Justice	47	44	57
SWRK	Social Work	132	150	165
SOCI	Sociology/Geography/Political Science/History	28	19	11
BADM	Business Administration	60	63	80
PROF	Professional Development	251	268	200
<b>Total</b>		<b>768</b>	<b>773</b>	<b>769</b>

## Fall 2014-2016 Enrolled Students Graduate By Major

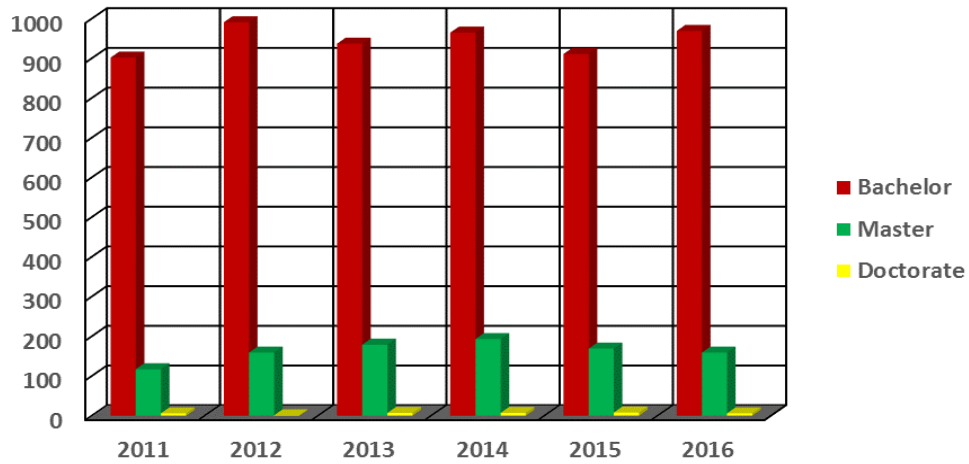


Major	Title	2014	2015	2016
EDUC	Education	139	189	199
ENGL	English Language	8	1	0
BIOL	Biology	8	1	0
MATH	Mathematics	9	2	0
MSCI	Military Behavioral Health Graduate Certificate	13	9	7
PSYC	Psychology	31	26	26
CRJC	Criminal Justice	46	35	49
SWRK	Social Work	144	121	110
SOCI	Sociology/Geography/Political Science	16	16	10
HCM	Medical/Health Management and Clinical Assistant/Specialist	12	5	3
BADM	Business Administration	70	99	187
PROF	Professional Development	156	94	92
<b>Total</b>		<b>652</b>	<b>598</b>	<b>683</b>



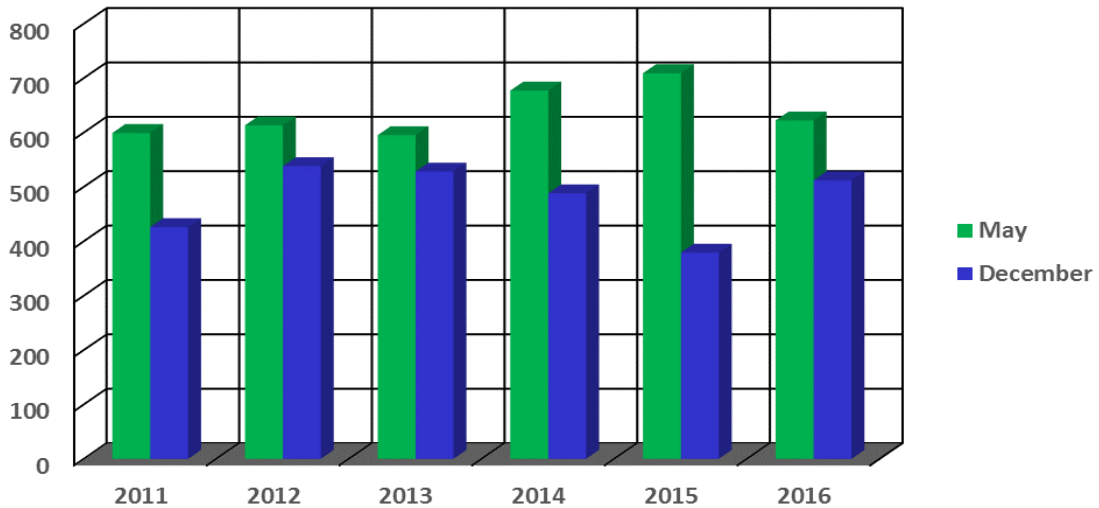
Upper Division (junior, senior, and graduate) Enrollment		Fall 13	Spr 14	Fall 14	Spr 15	Fall 15	Fall 16
090101 Communication Studies/Speech Commun	018 BA	89	78	80	86	77	77
110701 Computer Science	027 BS	59	67	64	76	93	87
130401 Educational Leadership and Administration, General	124 MSA	25	25	38	39	31	23
	403 EdD	66	61	54	50	59	77
131202 Elementary Education and Teaching	027 BS	130	116	99	96	88	88
131203 Junior High/Intermediate/Middle School Education and Teaching	027 BS	44	47	38	38	26	26
131210 Early Childhood Education and Teaching	027 BS	156	129	88	86	74	56
131299 Teacher Education and Professional Development, Specific Levels and Methods, Other	106 MAT	35	34	28	26	23	16
	109 MEd	39	29	14	15	11	5
131302 Art Teacher Education	027 BS	11	6	4	3	7	5
131303 Business Teacher Education	027 BS	0	0	0	1	1	0
131305 English/Language Arts Teacher Education	027 BS	6	2	2	1	1	0
131311 Mathematics Teacher Education	027 BS	7	7	2	2	2	0
131312 Music Teacher Education	027 BS	12	12	15	13	15	6
131314 Physical Education Teaching and Coaching	027 BS	26	16	8	8	11	18
131322 Biology Teacher Education	027 BS	6	3	4	3	2	1
160905 Spanish Language and Literature	018 BA	9	9	9	13	18	13
230101 English Language and Literature, General	018 BA	24	29	20	18	30	31
	102 MA	2	2	1	0	0	0
240101 Liberal Arts and Sciences/Liberal Studies	027 BA	37	49	51	57	66	53
240102 General Studies	027 BA	0	0	0	0	333	427
260101 Biology/Biological Sciences, General	027 BS	177	162	162	170	171	173
	123 MS	15	14	8	5	1	0
261201 Biotechnology	027 BS	10	12	8	10	6	5
270101 Mathematics, General	027 BS	28	26	28	28	29	27
	123 MS	13	11	9	7	1	0
400501 Chemistry, General	018 BA	21	24	11	9	9	10
	027 BS	47	23	32	38	39	20
420101 Psychology, General	027 BS	320	333	317	324	328	374
	102 MA	33	26	31	25	26	26
430104 Criminal Justice/Safety Studies	027 BS	296	310	321	336	324	288
	123 MS	39	37	38	30	33	47
430106 Forensic Science and Technology	027 BS	24	24	28	34	35	34
430202 Fire Services Administration	027 BS	35	17	73	85	82	81
440401 Public Administration	018 BA	16	24	23	22	31	28
440701 Social Work	138 BSW	31	59	71	104	119	146
	138 MSW	165	168	144	106	121	109
450701 Geography	018 BA	20	20	15	15	14	15
451001 Political Science and Government, General	018 BA	34	27	22	17	20	22
	102 MA	1	1	0	0	0	0
451101 Sociology	018 BA	147	130	126	126	119	117
	102 MA	10	11	13	14	15	9
500501 Drama and Dramatics/Theatre Arts, General	027 BS	0	0	0	0	0	0
500599 Dramatic/Theatre Arts and Stagecraft, Other	018 BA	8	7	12	12	9	12
500701 Art/Art Studies, General	018 BA	27	31	30	30	31	35
500901 Music, General	018 BA	4	1	1	4	6	14
510701 Healthcare Administration	027 BS	0	0	0	0	0	53
511601 Nursing - Registered Nurse Training (RN, ASN, BSN, MSN)	039 BSN	371	347	500	532	590	534
520201 Business Administration and Management, General	027 BS	334	320	297	318	329	325
	107 MBA	73	71	66	56	75	162
520301 Accounting	027 BS	75	81	77	78	66	74
520801 Finance, General	027 BS	24	25	20	21	28	32
521201 Management Information Systems, General	027 BS	26	27	23	29	39	17
540101 History, General	018 BA	18	21	19	16	21	19

## Degrees Conferred Between 2011-2016 Comparison By Degree Level



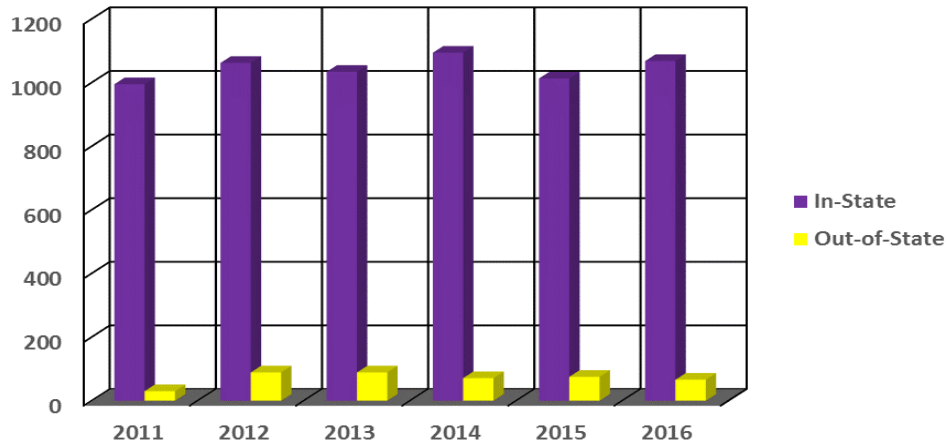
Degree Type	2011	2012	2013	2014	2015	2016
<b>Bachelor</b>	902	991	937	965	911	954
<b>Master</b>	117	159	179	193	169	160
<b>Doctorate</b>	6	1	7	7	8	6
<b>Total</b>	1025	1151	1123	1,165	1,088	1,120

### By Month



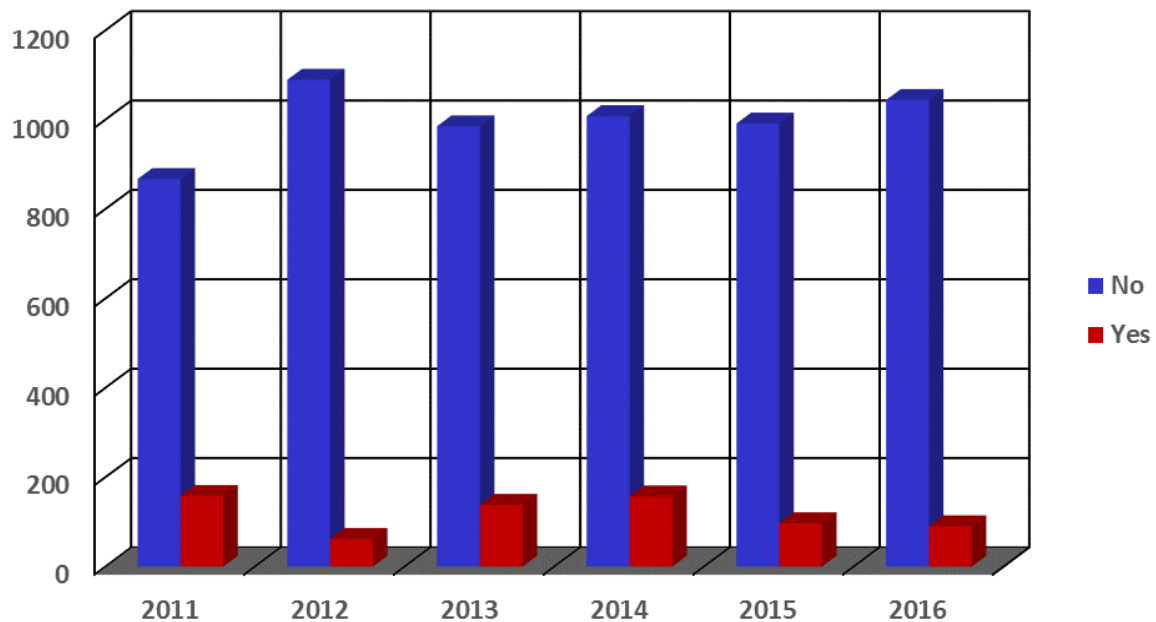
Month	2011	2012	2013	2014	2015	2016
<b>May</b>	599	613	595	677	709	614
<b>December</b>	426	538	528	488	379	506

## Degrees Conferred Between 2011-2016 Comparison By Residency



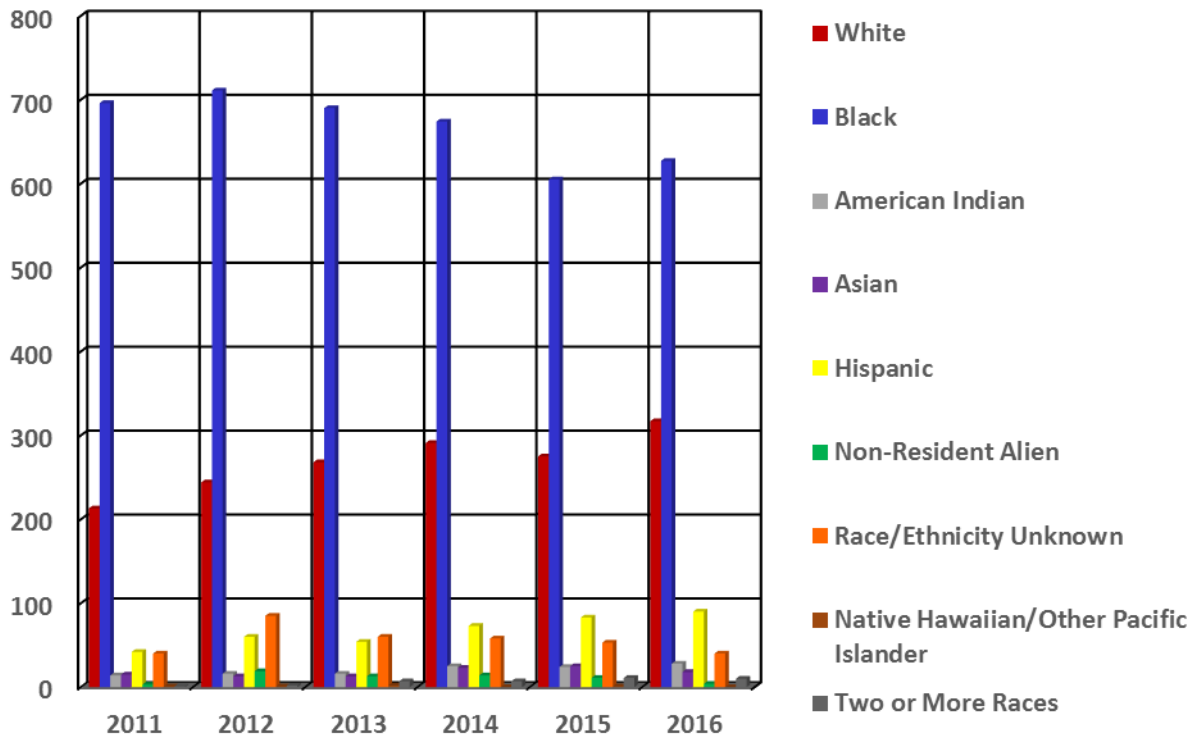
Residency	2011	2012	2013	2014	2015	2016
In-State	995	1,062	1,034	1,094	1,013	1,055
Out-of-State	30	89	89	71	75	65

## By Teacher Certification



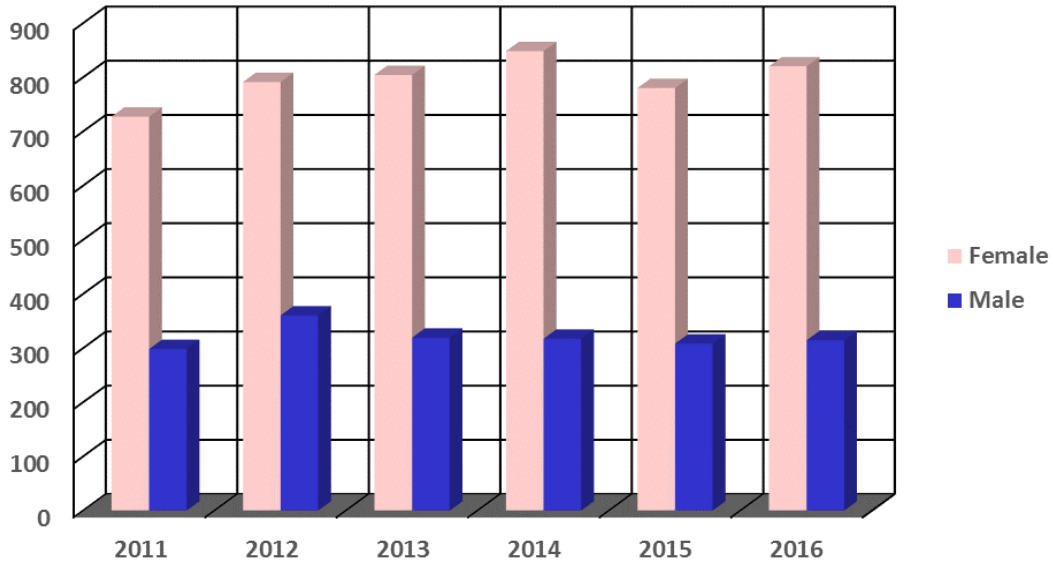
Certification	2011	2012	2013	2014	2015	2016
No	867	1,089	985	1,008	991	1,087
Yes	158	62	138	157	97	33

## Degrees Conferred Between 2011-2016 Comparison By Race



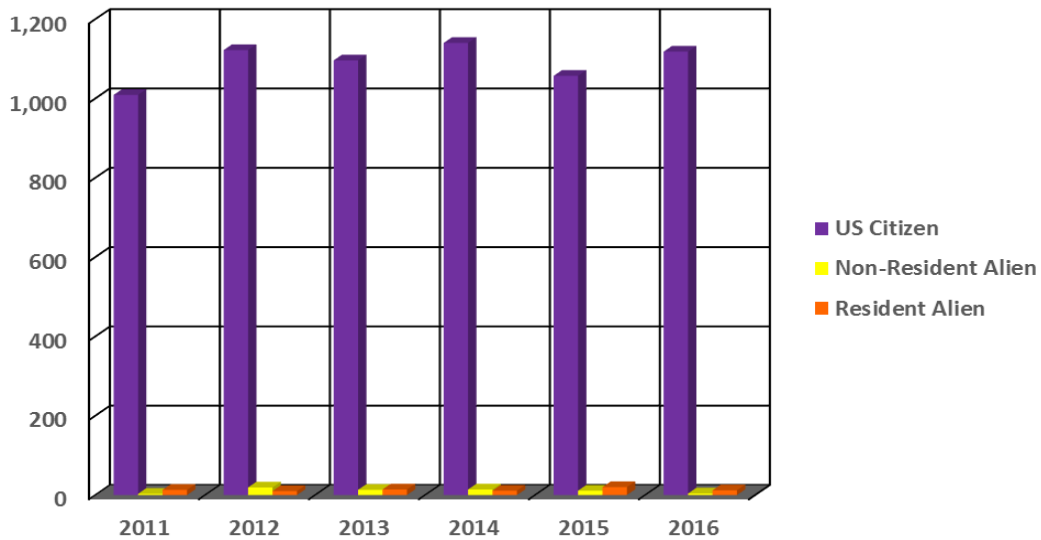
Race	2011	2012	2013	2014	2015	2016
White	213	244	268	291	275	316
Black	696	711	690	674	605	619
American Indian	14	16	16	25	24	27
Asian	15	13	13	23	25	19
Hispanic	42	60	54	73	83	86
Non-Resident Alien	3	19	13	14	11	3
Race/Ethnicity Unknown	40	85	60	58	53	40
Native Hawaiian/Other Pacific Islander	1	1	2	0	1	0
Two or More Races	1	2	7	7	11	10

## Degrees Conferred Between 2011-2016 Comparison By Gender



Gender	2011	2012	2013	2014	2015	2016
Female	727	791	804	848	780	812
Male	298	360	319	317	308	308

## By Citizenship



Citizenship	2011	2012	2013	2014	2015	2016
US Citizen	1,009	1,122	1,096	1,140	1,057	1,106
Non-Resident Alien	3	19	13	14	11	3
Resident Alien	13	10	14	11	20	11

Number of Degrees Awarded		2011-	2012-	2013-	2014-	2015-
		2012	2013	2014	2015	2016
90101 Communication Studies/Speech Communication and Rhe	018 BA	21	36	35	38	32
110701 Computer Science	027 BS	15	21	12	7	18
130401 Educational Leadership and Administration, General	124 MSA	14	14	6	17	22
	403 EdD	1	7	8	8	6
131202 Elementary Education and Teaching	027 BS	26	30	33	19	10
131203 Junior High/Intermediate/Middle School Education and Teaching	027 BS	4	5	11	11	5
131210 Early Childhood Education and Teaching	027 BS	34	38	45	21	31
131299 Teacher Education and Professional Development, Specific Levels and Methods, Other	106 MAT	9	10	12	8	8
	109 MEd	25	19	25	8	3
131302 Art Teacher Education	027 BS	2	0	4	1	1
131305 English/Language Arts Teacher Education	027 BS	2	1	1	1	0
131307 Health Teacher Education	027 BS	0	0	0	0	0
131311 Mathematics Teacher Education	027 BS	0	3	1	1	2
131312 Music Teacher Education	027 BS	3	2	3	0	0
131314 Physical Education Teaching and Coaching	027 BS	8	3	6	1	0
131317 Social Science Teacher Education	027 BS	1	3	0	0	0
131322 Biology Teacher Education	027 BS	2	3	2	0	1
131330 Spanish Language Teacher Education	027 BS	.	1	0	0	0
160905 Spanish Language and Literature	018 BA	2	7	2	3	6
230101 English Language and Literature, General	018 BA	26	21	18	6	11
	102 MA	.	1	2	1	0
240101 Liberal Arts andSciences/Liberal Studies	027 BA	.	1	39	34	61
260101 Biology/Biological Sciences, General	027 BS	34	30	33	35	38
	123 MS	2	3	2	4	5
261201 Biotechnology	027 BS	1	4	2	0	2
270101 Mathematics, General	027 BS	14	14	12	12	6
	123 MS	2	3	2	4	5
400501 Chemistry, General	018 BA	10	8	7	4	0
	027 BS	4	4	6	9	7
420101 Psychology, General	027 BS	154	128	125	119	127
	102 MA	10	5	11	10	6
430104 Criminal Justice/Safety Studies	027 BS	157	169	144	125	129
	123 MS	10	13	4	10	6
430106 Forensic Science & Technology	027 BS	9	3	5	2	4
430202 Fire Services Administration	027 BS	22	14	19	28	36
440401 Public Administration	018 BS	.	2	6	8	5
440701 Social Work	043 BSW	0	0	11	30	42
	138 MSW	60	77	95	81	79
450701 Geography	018 BA	9	4	14	10	7
451001 Political Science and Government, General	018 BA	22	28	12	10	6
	102 MA	2	4	0	1	0

Number of Degrees Awarded		2011-	2012-	2013-	2014-	2015-
		2012	2013	2014	2015	2016
451101 Sociology	018 BA	117	78	57	59	41
	102 MA	6	6	5	4	6
500599 Dramatic/Theatre Arts and Stagecraft, Other	018 BA	12	0	9	3	3
500701 Art/Art Studies, General	018 BA	22	11	14	9	14
500901 Music, General	018 BA	4	2	2	0	4
510701 Health/Healthcare Administration/Management	027 BS	.	.	.	.	4
513801 Nursing - Registered Nurse Training (RN, ASN, BSN, MSN)	039 BSN	43	75	83	137	153
	107 MBA	19	24	29	21	20
520201 Business Administration and Management, General	027 BS	136	140	131	100	95
	107 MBA	19	24	29	21	20
520301 Accounting	027 BS	29	16	16	36	18
520801 Finance, General	027 BS	18	7	19	6	13
521201 Management Information Systems, General	027 BS	10	8	9	15	9
540101 History, General	018 BA	18	17	16	11	13
Total		1151	1123	1165	1088	1120

**Degree's Awarded 2012-2013  
By County**

	Bachelor's		Master's		Doctorate		Total	
	Count	Percent	Count	Percent	Count	Percent	Count	Percent
Alamance	1	0.09%	0	0.00%	0	0.00%	1	0.09%
Beaufort	2	0.18%	0	0.00%	0	0.00%	2	0.18%
Bertie	1	0.09%	0	0.00%	0	0.00%	1	0.09%
Bladen	12	1.07%	2	0.18%	0	0.00%	14	1.25%
Brunswick	4	0.36%	0	0.00%	0	0.00%	4	0.36%
Bumcombe	1	0.09%	0	0.00%	0	0.00%	1	0.09%
Cabarrus	1	0.09%	0	0.00%	0	0.00%	1	0.09%
Caldwell	1	0.09%	0	0.00%	0	0.00%	1	0.09%
Camden	0	0.00%	1	0.09%	0	0.00%	1	0.09%
Chowan	1	0.09%	0	0.00%	0	0.00%	1	0.09%
Cleveland	3	0.27%	0	0.00%	0	0.00%	3	0.27%
Columbus	9	0.80%	0	0.00%	0	0.00%	9	0.80%
Craven	4	0.36%	0	0.00%	0	0.00%	4	0.36%
Cumberland	536	47.73%	100	8.90%	2	0.18%	638	56.81%
Davidson	1	0.09%	1	0.09%	0	0.00%	2	0.18%
Duplin	2	0.18%	0	0.00%	0	0.00%	2	0.18%
Durham	6	0.53%	0	0.00%	0	0.00%	6	0.53%
Edgecombe	6	0.53%	0	0.00%	0	0.00%	6	0.53%
Forsyth	5	0.45%	2	0.18%	0	0.00%	7	0.62%
Franklin	2	0.18%	0	0.00%	0	0.00%	2	0.18%
Gaston	4	0.36%	0	0.00%	0	0.00%	4	0.36%
Granville	1	0.09%	0	0.00%	0	0.00%	1	0.09%
Greene	2	0.18%	0	0.00%	0	0.00%	2	0.18%
Guilford	8	0.71%	0	0.00%	0	0.00%	8	0.71%
Halifax	4	0.36%	1	0.09%	0	0.00%	5	0.45%
Harnett	40	3.56%	1	0.09%	0	0.00%	41	3.65%
Haywood	1	0.09%	0	0.00%	0	0.00%	1	0.09%
Henderson	1	0.09%	0	0.00%	0	0.00%	1	0.09%
Hertford	3	0.27%	0	0.00%	0	0.00%	3	0.27%
Hoke	26	2.32%	7	0.62%	0	0.00%	33	2.94%
Hyde	1	0.09%	0	0.00%	0	0.00%	1	0.09%
Iredell	2	0.18%	1	0.09%	0	0.00%	3	0.27%
Johnston	9	0.80%	1	0.09%	1	0.09%	11	0.98%
Jones	1	0.09%	0	0.00%	0	0.00%	1	0.09%
Lee	15	1.34%	2	0.18%	0	0.00%	17	1.51%
Lenoir	7	0.62%	0	0.00%	0	0.00%	7	0.62%
Lincoln	1	0.09%	0	0.00%	0	0.00%	1	0.09%
Martin	1	0.09%	0	0.00%	0	0.00%	1	0.09%
Mecklenburg	25	2.23%	0	0.00%	0	0.00%	25	2.23%
Moore	7	0.62%	1	0.09%	1	0.09%	9	0.80%
Nash	6	0.53%	1	0.09%	0	0.00%	7	0.62%
New Hanover	7	0.62%	3	0.27%	0	0.00%	10	0.89%
Northhampton	3	0.27%	0	0.00%	0	0.00%	3	0.27%
Onslow	5	0.45%	0	0.00%	0	0.00%	5	0.45%
Orange	1	0.09%	0	0.00%	0	0.00%	1	0.09%
Pamlico	1	0.09%	0	0.00%	0	0.00%	1	0.09%
Pasquotank	1	0.09%	1	0.09%	0	0.00%	2	0.18%
Pender	1	0.09%	0	0.00%	0	0.00%	1	0.09%
Person	2	0.18%	0	0.00%	0	0.00%	2	0.18%
Pitt	8	0.71%	1	0.09%	1	0.09%	10	0.89%
Richmond	1	0.09%	1	0.09%	0	0.00%	2	0.18%
Robeson	25	2.23%	2	0.18%	1	0.09%	28	2.49%
Rowan	1	0.09%	0	0.00%	0	0.00%	1	0.09%
Sampson	20	1.78%	1	0.09%	0	0.00%	21	1.87%
Scotland	6	0.53%	1	0.09%	0	0.00%	7	0.62%



Stanley	3	0.27%	0	0.00%	0	0.00%	3	0.27%
Surry	1	0.09%	0	0.00%	0	0.00%	1	0.09%
Tyrrell	1	0.09%	0	0.00%	0	0.00%	1	0.09%
Union	1	0.09%	0	0.00%	0	0.00%	1	0.09%
Vance	2	0.18%	0	0.00%	0	0.00%	2	0.18%
Wake	18	1.60%	3	0.27%	0	0.00%	21	1.87%
Warren	2	0.18%	0	0.00%	0	0.00%	2	0.18%
Washington	2	0.18%	0	0.00%	0	0.00%	2	0.18%
Watauga	1	0.09%	0	0.00%	0	0.00%	1	0.09%
Wayne	9	0.80%	2	0.18%	1	0.09%	12	1.07%
Wilson	6	0.53%	0	0.00%	0	0.00%	6	0.53%
<b>Total County</b>	<b>891</b>	<b>79.34%</b>	<b>136</b>	<b>12.11%</b>	<b>7</b>	<b>0.62%</b>	<b>1034</b>	<b>92.07%</b>

## Degree's Awarded 2013-2014 By County

	Bachelor's		Master's		Doctorate		Total	
	Count	Percent	Count	Percent	Count	Percent	Count	Percent
Alamance	6	0.52%	0	0.00%	0	0.00%	6	0.52%
Beaufort	1	0.09%	0	0.00%	0	0.00%	1	0.09%
Bladen	13	1.12%	1	0.09%	0	0.00%	14	1.20%
Brunswick	0	0.00%	1	0.09%	0	0.00%	1	0.09%
Buncombe	3	0.26%	0	0.00%	0	0.00%	3	0.26%
Cabarrus	5	0.43%	0	0.00%	0	0.00%	5	0.43%
Carteret	1	0.09%	0	0.00%	0	0.00%	1	0.09%
Caswell	1	0.09%	0	0.00%	0	0.00%	1	0.09%
Catawba	3	0.26%	0	0.00%	0	0.00%	3	0.26%
Cleveland	3	0.26%	1	0.09%	0	0.00%	4	0.34%
Columbus	5	0.43%	0	0.00%	0	0.00%	5	0.43%
Craven	6	0.52%	0	0.00%	0	0.00%	6	0.52%
Cumberland	549	47.12%	114	9.79%	4	0.34%	667	57.25%
Currituck	1	0.09%	0	0.00%	0	0.00%	1	0.09%
Dare	1	0.09%	0	0.00%	0	0.00%	1	0.09%
Davidson	1	0.09%	0	0.00%	0	0.00%	1	0.09%
Duplin	9	0.77%	1	0.09%	0	0.00%	10	0.86%
Durham	8	0.69%	2	0.17%	0	0.00%	10	0.86%
Edgecombe	3	0.26%	1	0.09%	0	0.00%	4	0.34%
Forsyth	8	0.69%	1	0.09%	0	0.00%	9	0.77%
Franklin	4	0.34%	0	0.00%	0	0.00%	4	0.34%
Gaston	3	0.26%	0	0.00%	0	0.00%	3	0.26%
Granville	2	0.17%	0	0.00%	0	0.00%	2	0.17%
Greene	0	0.00%	1	0.09%	0	0.00%	1	0.09%
Guilford	4	0.34%	0	0.00%	0	0.00%	4	0.34%
Halifax	5	0.43%	0	0.00%	0	0.00%	5	0.43%
Harnett	31	2.66%	4	0.34%	1	0.09%	36	3.09%
Hertford	3	0.26%	2	0.17%	0	0.00%	5	0.43%
Hoke	23	1.97%	6	0.52%	0	0.00%	29	2.49%
Iredell	1	0.09%	0	0.00%	0	0.00%	1	0.09%
Johnston	12	1.03%	2	0.17%	0	0.00%	14	1.20%
Jones	1	0.09%	0	0.00%	0	0.00%	1	0.09%
Lee	20	1.72%	1	0.09%	0	0.00%	21	1.80%
Lenoir	3	0.26%	1	0.09%	0	0.00%	4	0.34%
Lincoln	1	0.09%	0	0.00%	0	0.00%	1	0.09%
Martin	3	0.26%	0	0.00%	0	0.00%	3	0.26%
Mecklenburg	16	1.37%	2	0.17%	0	0.00%	18	1.55%
Moore	4	0.34%	2	0.17%	0	0.00%	6	0.52%
Nash	2	0.17%	0	0.00%	0	0.00%	2	0.17%
New Hanover	8	0.69%	2	0.17%	0	0.00%	10	0.86%
Northhampton	3	0.26%	0	0.00%	0	0.00%	3	0.26%
Onslow	2	0.17%	0	0.00%	0	0.00%	2	0.17%
Orange	1	0.09%	0	0.00%	0	0.00%	1	0.09%
Pasquotank	1	0.09%	0	0.00%	0	0.00%	1	0.09%
Pender	3	0.26%	0	0.00%	0	0.00%	3	0.26%
Pitt	13	1.12%	0	0.00%	0	0.00%	13	1.12%
Randolph	1	0.09%	0	0.00%	0	0.00%	1	0.09%
Richmond	7	0.60%	0	0.00%	0	0.00%	7	0.60%
Robeson	37	3.18%	5	0.43%	0	0.00%	42	3.61%
Rowan	4	0.34%	0	0.00%	0	0.00%	4	0.34%
Rutherford	2	0.17%	0	0.00%	0	0.00%	2	0.17%
Sampson	22	1.89%	4	0.34%	0	0.00%	26	2.23%
Scotland	5	0.43%	0	0.00%	1	0.09%	6	0.52%
Stokes	1	0.09%	0	0.00%	0	0.00%	1	0.09%
Union	5	0.43%	0	0.00%	0	0.00%	5	0.43%

Vance	4	0.34%	0	0.00%	0	0.00%	4	0.34%
Wake	26	2.23%	4	0.34%	1	0.09%	31	2.66%
Warren	1	0.09%	0	0.00%	0	0.00%	1	0.09%
Washington	1	0.09%	0	0.00%	0	0.00%	1	0.09%
Wayne	8	0.69%	1	0.09%	0	0.00%	9	0.77%
Wilson	7	0.60%	0	0.00%	0	0.00%	7	0.60%
Yadkin	1	0.09%	0	0.00%	0	0.00%	1	0.09%
<b>Total County</b>	<b>928</b>	<b>79.66%</b>	<b>159</b>	<b>13.65%</b>	<b>7</b>	<b>0.60%</b>	<b>1094</b>	<b>93.91%</b>

**Degree's Awarded 2014-2015  
By County**

	Bachelor's		Master's		Doctorate		Total	
	Count	Percent	Count	Percent	Count	Percent	Count	Percent
Alamance	3	0.28%	1	0.09%	0	0.00%	4	0.37%
Anson	3	0.28%	0	0.00%	0	0.00%	3	0.28%
Bertie	4	0.37%	0	0.00%	0	0.00%	4	0.37%
Bladen	9	0.83%	3	0.28%	1	0.09%	13	1.19%
Brunswick	1	0.09%	0	0.00%	0	0.00%	1	0.09%
Buncombe	2	0.18%	0	0.00%	0	0.00%	2	0.18%
Cabarrus	4	0.37%	0	0.00%	0	0.00%	4	0.37%
Camden	1	0.09%	0	0.00%	0	0.00%	1	0.09%
Carteret	2	0.18%	0	0.00%	0	0.00%	2	0.18%
Catawba	0	0.00%	1	0.09%	0	0.00%	1	0.09%
Chatam	3	0.28%	0	0.00%	0	0.00%	3	0.28%
Cherokee	0	0.00%	1	0.09%	0	0.00%	1	0.09%
Cleveland	1	0.09%	0	0.00%	0	0.00%	1	0.09%
Columbus	12	1.10%	0	0.00%	0	0.00%	12	1.10%
Craven	5	0.46%	0	0.00%	0	0.00%	5	0.46%
Cumberland	496	45.59%	79	7.26%	4	0.37%	579	53.22%
Davidson	3	0.28%	0	0.00%	0	0.00%	3	0.28%
Duplin	6	0.55%	3	0.28%	0	0.00%	9	0.83%
Durham	10	0.92%	0	0.00%	0	0.00%	10	0.92%
Edgecombe	5	0.46%	0	0.00%	0	0.00%	5	0.46%
Forsyth	6	0.55%	0	0.00%	0	0.00%	6	0.55%
Franklin	1	0.09%	0	0.00%	0	0.00%	1	0.09%
Gates	1	0.09%	0	0.00%	0	0.00%	1	0.09%
Guilford	14	1.29%	0	0.00%	0	0.00%	14	1.29%
Halifax	6	0.55%	1	0.09%	0	0.00%	7	0.64%
Harnett	30	2.76%	4	0.37%	0	0.00%	34	3.13%
Hertford	2	0.18%	0	0.00%	0	0.00%	2	0.18%
Hoke	21	1.93%	5	0.46%	1	0.09%	27	2.48%
Hyde	0	0.00%	1	0.09%	0	0.00%	1	0.09%
Iredell	2	0.18%	0	0.00%	0	0.00%	2	0.18%
Johnston	9	0.83%	1	0.09%	0	0.00%	10	0.92%
Lee	15	1.38%	3	0.28%	0	0.00%	18	1.65%
Lenoir	2	0.18%	0	0.00%	0	0.00%	2	0.18%
Mecklenburg	22	2.02%	5	0.46%	0	0.00%	27	2.48%
Moore	7	0.64%	1	0.09%	2	0.18%	10	0.92%
Nash	4	0.37%	2	0.18%	0	0.00%	6	0.55%
New Hanover	2	0.18%	0	0.00%	0	0.00%	2	0.18%
Northhampton	1	0.09%	0	0.00%	0	0.00%	1	0.09%
Onslow	10	0.92%	0	0.00%	0	0.00%	10	0.92%
Orange	3	0.28%	0	0.00%	0	0.00%	3	0.28%
Pamlico	1	0.09%	0	0.00%	0	0.00%	1	0.09%
Pasquotank	1	0.09%	0	0.00%	0	0.00%	1	0.09%
Pender	0	0.00%	1	0.09%	0	0.00%	1	0.09%
Person	1	0.09%	0	0.00%	0	0.00%	1	0.09%
Pitt	9	0.83%	0	0.00%	0	0.00%	9	0.83%
Randolph	1	0.09%	0	0.00%	0	0.00%	1	0.09%
Richmond	0	0.00%	1	0.09%	0	0.00%	1	0.09%
Robeson	36	3.31%	7	0.64%	0	0.00%	43	3.95%

Rockingham	3	0.28%	0	0.00%	0	0.00%	3	0.28%
Rowan	2	0.18%	0	0.00%	0	0.00%	2	0.18%
Rutherford	1	0.09%	0	0.00%	0	0.00%	1	0.09%
Sampson	21	1.93%	1	0.09%	0	0.00%	22	2.02%
Scotland	7	0.64%	0	0.00%	0	0.00%	7	0.64%
Stanly	4	0.37%	0	0.00%	0	0.00%	4	0.37%
Stokes	3	0.28%	1	0.09%	0	0.00%	4	0.37%
Surry	2	0.18%	0	0.00%	0	0.00%	2	0.18%
Union	7	0.64%	0	0.00%	0	0.00%	7	0.64%
Vance	5	0.46%	0	0.00%	0	0.00%	5	0.46%
Wake	29	2.67%	5	0.46%	0	0.00%	34	3.13%
Watauga	0	0.00%	1	0.09%	0	0.00%	1	0.09%
Wayne	7	0.64%	2	0.18%	0	0.00%	9	0.83%
Wilkes	1	0.09%	1	0.09%	0	0.00%	2	0.18%
Wilson	3	0.28%	2	0.18%	0	0.00%	5	0.46%
<b>Total County</b>	<b>872</b>	<b>80.15%</b>	<b>133</b>	<b>12.22%</b>	<b>8</b>	<b>0.73%</b>	<b>1013</b>	<b>93.11%</b>

**Degree's Awarded 2015-2016  
By County**

	Bachelor's		Master's		Doctorate		Total	
	Count	Percent	Count	Percent	Count	Percent	Count	Percent
Alamance	7	0.63%	0	0.00%	0	0.00%	7	0.63%
Anson	1	0.09%	0	0.00%	0	0.00%	1	0.09%
Bertie	3	0.27%	0	0.00%	0	0.00%	3	0.27%
Bladen	14	1.25%	2	0.18%	1	0.09%	17	1.52%
Brunswick	2	0.18%	1	0.09%	0	0.00%	3	0.27%
Buncombe	2	0.18%	0	0.00%	0	0.00%	2	0.18%
Cabarrus	7	0.63%	0	0.00%	0	0.00%	7	0.63%
Caldwell	1	0.09%	1	0.09%	0	0.00%	2	0.18%
Camden	2	0.18%	0	0.00%	0	0.00%	2	0.18%
Carteret	1	0.09%	0	0.00%	0	0.00%	1	0.09%
Chatam	1	0.09%	0	0.00%	0	0.00%	1	0.09%
Cherokee	1	0.09%	0	0.00%	0	0.00%	1	0.09%
Chowan	1	0.09%	0	0.00%	0	0.00%	1	0.09%
Cleveland	3	0.27%	0	0.00%	0	0.00%	3	0.27%
Columbus	19	1.70%	1	0.09%	0	0.00%	20	1.79%
Craven	4	0.36%	1	0.09%	0	0.00%	5	0.45%
Cumberland	440	39.29%	88	7.86%	2	0.18%	530	47.32%
Dare	2	0.18%	0	0.00%	0	0.00%	2	0.18%
Davidson	1	0.09%	0	0.00%	0	0.00%	1	0.09%
Davie	0	0.00%	1	0.09%	0	0.00%	1	0.09%
Duplin	7	0.63%	0	0.00%	1	0.09%	8	0.71%
Durham	7	0.63%	1	0.09%	0	0.00%	8	0.71%
Edgecombe	3	0.27%	0	0.00%	1	0.09%	4	0.36%
Forsyth	4	0.36%	0	0.00%	0	0.00%	4	0.36%
Franklin	3	0.27%	0	0.00%	0	0.00%	3	0.27%
Gaston	6	0.54%	1	0.09%	0	0.00%	7	0.63%
Gates	2	0.18%	0	0.00%	0	0.00%	2	0.18%
Granville	1	0.09%	0	0.00%	0	0.00%	1	0.09%
Guilford	13	1.16%	1	0.09%	0	0.00%	14	1.25%
Halifax	2	0.18%	0	0.00%	0	0.00%	2	0.18%
Harnett	33	2.95%	2	0.18%	0	0.00%	35	3.13%
Haywood	1	0.09%	0	0.00%	0	0.00%	1	0.09%
Henderson	1	0.09%	0	0.00%	0	0.00%	1	0.09%
Hertford	2	0.18%	0	0.00%	0	0.00%	2	0.18%
Hoke	33	2.95%	9	0.80%	0	0.00%	42	3.75%
Iredell	8	0.71%	0	0.00%	0	0.00%	8	0.71%
Johnston	11	0.98%	1	0.09%	0	0.00%	12	1.07%
Jones	1	0.09%	0	0.00%	0	0.00%	1	0.09%
Lee	14	1.25%	4	0.36%	0	0.00%	18	1.61%
Lenoir	5	0.45%	0	0.00%	0	0.00%	5	0.45%
Lincoln	2	0.18%	0	0.00%	0	0.00%	2	0.18%
Macon	1	0.09%	0	0.00%	0	0.00%	1	0.09%
Martin	2	0.18%	0	0.00%	0	0.00%	2	0.18%
Mecklenburg	33	2.95%	1	0.09%	0	0.00%	34	3.04%
Montgomery	1	0.09%	0	0.00%	0	0.00%	1	0.09%
Moore	8	0.71%	0	0.00%	0	0.00%	8	0.71%
Nash	5	0.45%	1	0.09%	0	0.00%	6	0.54%

**Degree's Awarded 2015-2016  
By County**

	Bachelor's		Master's		Doctorate		Total	
	Count	Percent	Count	Percent	Count	Percent	Count	Percent
New Hanover	8	0.71%	0	0.00%	0	0.00%	8	0.71%
Northhampton	2	0.18%	0	0.00%	0	0.00%	2	0.18%
Onslow	7	0.63%	0	0.00%	0	0.00%	7	0.63%
Orange	1	0.09%	0	0.00%	0	0.00%	1	0.09%
Pamlico	0	0.00%	1	0.09%	0	0.00%	1	0.09%
Pasquotank	3	0.27%	0	0.00%	0	0.00%	3	0.27%
Pender	3	0.27%	0	0.00%	1	0.09%	4	0.36%
Perquimans	1	0.09%	0	0.00%	0	0.00%	1	0.09%
Person	1	0.09%	1	0.09%	0	0.00%	2	0.18%
Pitt	10	0.89%	0	0.00%	0	0.00%	10	0.89%
Richmond	2	0.18%	1	0.09%	0	0.00%	3	0.27%
Robeson	49	4.38%	4	0.36%	0	0.00%	53	4.73%
Rockingham	3	0.27%	0	0.00%	0	0.00%	3	0.27%
Rowan	2	0.18%	0	0.00%	0	0.00%	2	0.18%
Sampson	30	2.68%	2	0.18%	0	0.00%	32	2.86%
Scotland	9	0.80%	2	0.18%	0	0.00%	11	0.98%
Stanly	1	0.09%	0	0.00%	0	0.00%	1	0.09%
Surry	1	0.09%	0	0.00%	0	0.00%	1	0.09%
Union	4	0.36%	0	0.00%	0	0.00%	4	0.36%
Wake	39	3.48%	4	0.36%	0	0.00%	43	3.84%
Wayne	12	1.07%	1	0.09%	0	0.00%	13	1.16%
Wilkes	2	0.18%	0	0.00%	0	0.00%	2	0.18%
Wilson	4	0.36%	0	0.00%	0	0.00%	4	0.36%
Yadkin	2	0.18%	0	0.00%	0	0.00%	2	0.18%
<b>Total County</b>	<b>917</b>	<b>81.88%</b>	<b>132</b>	<b>11.79%</b>	<b>6</b>	<b>0.54%</b>	<b>1055</b>	<b>94.20%</b>

**Degrees Awarded 2012-2013  
By State**

	Bachelor's		Master's		Doctorate		Total	
	Count	Percent	Count	Percent	Count	Percent	Count	Percent
Alabama	0	0.00%	1	0.09%	0	0.00%	1	0.09%
California	0	0.00%	1	0.09%	0	0.00%	1	0.09%
Colorado	1	0.09%	2	0.18%	0	0.00%	3	0.27%
Connecticut	0	0.00%	1	0.09%	0	0.00%	1	0.09%
Dist. Of Columbia	10	0.89%	0	0.00%	0	0.00%	10	0.89%
Florida	0	0.00%	1	0.09%	0	0.00%	1	0.09%
Georgia	2	0.18%	1	0.09%	0	0.00%	3	0.27%
Hawaii	0	0.00%	1	0.09%	0	0.00%	1	0.09%
Illinois	2	0.18%	0	0.00%	0	0.00%	2	0.18%
Indiana	0	0.00%	1	0.09%	0	0.00%	1	0.09%
Iowa	0	0.00%	1	0.09%	0	0.00%	1	0.09%
Maryland	5	0.45%	2	0.18%	0	0.00%	7	0.62%
Massachusetts	0	0.00%	1	0.09%	0	0.00%	1	0.09%
Michigan	1	0.09%	0	0.00%	0	0.00%	1	0.09%
Missouri	1	0.09%	0	0.00%	0	0.00%	1	0.09%
New Jersey	4	0.36%	0	0.00%	0	0.00%	4	0.36%
New York	1	0.09%	5	0.45%	0	0.00%	6	0.53%
Oregon	0	0.00%	1	0.09%	0	0.00%	1	0.09%
Pennsylvania	1	0.09%	0	0.00%	0	0.00%	1	0.09%
South Carolina	2	0.18%	1	0.09%	0	0.00%	3	0.27%
Tennessee	0	0.00%	1	0.09%	0	0.00%	1	0.09%
Texas	0	0.00%	13	1.16%	0	0.00%	13	1.16%
Utah	0	0.00%	1	0.09%	0	0.00%	1	0.09%
Virginia	4	0.36%	3	0.27%	0	0.00%	7	0.62%
Washington	0	0.00%	1	0.09%	0	0.00%	1	0.09%
Unknown	1	0.09%	2	0.18%	0	0.00%	3	0.27%
Foreign Countries	11	0.98%	2	0.18%	0	0.00%	13	1.16%
<b>Total State</b>	<b>46</b>	<b>4.10%</b>	<b>43</b>	<b>3.83%</b>	<b>0</b>	<b>0.00%</b>	<b>89</b>	<b>7.93%</b>
<b>Total Residence</b>	<b>937</b>	<b>83.44%</b>	<b>179</b>	<b>15.94%</b>	<b>7</b>	<b>0.62%</b>	<b>1123</b>	<b>100.00%</b>



**Degrees Awarded 2013-2014  
By State**

	Bachelor's		Master's		Doctorate		Total	
	Count	Percent	Count	Percent	Count	Percent	Count	Percent
<i>Arizona</i>	1	0.09%	0	0.00%	0	0.00%	0	0.00%
<i>Arkansas</i>	1	0.09%	0	0.00%	0	0.00%	1	0.09%
<i>California</i>	1	0.09%	0	0.00%	0	0.00%	1	0.09%
<i>Delaware</i>	1	0.09%	0	0.00%	0	0.00%	1	0.09%
<i>Dist. Of Columbia</i>	6	0.52%	0	0.00%	0	0.00%	6	0.52%
<i>Florida</i>	1	0.09%	0	0.00%	0	0.00%	1	0.09%
<i>Georgia</i>	0	0.00%	4	0.34%	0	0.00%	4	0.34%
<i>Hawaii</i>	0	0.00%	1	0.09%	0	0.00%	1	0.09%
<i>Indiana</i>	0	0.00%	1	0.09%	0	0.00%	1	0.09%
<i>Kansas</i>	0	0.00%	1	0.09%	0	0.00%	1	0.09%
<i>Kentucky</i>	0	0.00%	2	0.17%	0	0.00%	2	0.17%
<i>Louisiana</i>	0	0.00%	1	0.09%	0	0.00%	1	0.09%
<i>Maryland</i>	3	0.26%	0	0.00%	0	0.00%	3	0.26%
<i>New Jersey</i>	3	0.26%	1	0.09%	0	0.00%	4	0.34%
<i>New York</i>	2	0.17%	0	0.00%	0	0.00%	2	0.17%
<i>Oklahoma</i>	0	0.00%	1	0.09%	0	0.00%	1	0.09%
<i>South Carolina</i>	2	0.17%	2	0.17%	0	0.00%	4	0.34%
<i>Tennessee</i>	0	0.00%	3	0.26%	0	0.00%	3	0.26%
<i>Texas</i>	0	0.00%	10	0.86%	0	0.00%	10	0.86%
<i>Virginia</i>	2	0.17%	1	0.09%	0	0.00%	3	0.26%
<i>Washington</i>	0	0.00%	4	0.34%	0	0.00%	4	0.34%
<i>Unknown</i>	0	0.00%	2	0.17%	0	0.00%	2	0.17%
<i>Foreign Countries</i>	14	1.20%	0	0.00%	0	0.00%	14	1.20%
<b>Total State</b>	<b>37</b>	<b>3.18%</b>	<b>34</b>	<b>2.92%</b>	<b>0</b>	<b>0.00%</b>	<b>70</b>	<b>6.01%</b>
<b>Total Residence</b>	<b>965</b>	<b>82.83%</b>	<b>193</b>	<b>16.57%</b>	<b>7</b>	<b>0.60%</b>	<b>1,165</b>	<b>100.00%</b>

**Degrees Awarded 2014-2015  
By State**

	Bachelor's		Master's		Doctorate		Total	
	Count	Percent	Count	Percent	Count	Percent	Count	Percent
<i>Alabama</i>	1	0.09%	0	0.00%	0	0.00%	1	0.09%
<i>California</i>	2	0.18%	0	0.00%	0	0.00%	2	0.18%
<i>Dist. Of Columbia</i>	7	0.64%	1	0.09%	0	0.00%	8	0.74%
<i>Florida</i>	1	0.09%	0	0.00%	0	0.00%	1	0.09%
<i>Georgia</i>	2	0.18%	2	0.18%	0	0.00%	4	0.37%
<i>Iowa</i>	1	0.09%	0	0.00%	0	0.00%	1	0.09%
<i>Kentucky</i>	0	0.00%	1	0.09%	0	0.00%	1	0.09%
<i>Maine</i>	0	0.00%	1	0.09%	0	0.00%	1	0.09%
<i>Maryland</i>	2	0.18%	4	0.37%	0	0.00%	6	0.55%
<i>Nevada</i>	1	0.09%	0	0.00%	0	0.00%	1	0.09%
<i>New Jersey</i>	1	0.09%	0	0.00%	0	0.00%	1	0.09%
<i>New York</i>	1	0.09%	1	0.09%	0	0.00%	2	0.18%
<i>Pennsylvania</i>	0	0.00%	1	0.09%	0	0.00%	1	0.09%
<i>South Carolina</i>	3	0.28%	1	0.09%	0	0.00%	4	0.37%
<i>Tennessee</i>	0	0.00%	1	0.09%	0	0.00%	1	0.09%
<i>Texas</i>	1	0.09%	18	1.65%	0	0.00%	19	1.75%
<i>Virginia</i>	1	0.09%	2	0.18%	0	0.00%	3	0.28%
<i>Washington</i>	1	0.09%	2	0.18%	0	0.00%	3	0.28%
<i>Unknown</i>	3	0.28%	1	0.09%	0	0.00%	4	0.37%
<i>Foreign Countries</i>	11	1.01%	0	0.00%	0	0.00%	11	1.01%
<b>Total State</b>	<b>39</b>	<b>3.56%</b>	<b>36</b>	<b>3.28%</b>	<b>0</b>	<b>0.00%</b>	<b>75</b>	<b>6.89%</b>
<b>Total Residence</b>	<b>911</b>	<b>83.73%</b>	<b>169</b>	<b>15.53%</b>	<b>8</b>	<b>0.74%</b>	<b>1,088</b>	<b>100.00%</b>

**Degrees Awarded 2015-2016  
By State**

	Bachelor's		Master's		Doctorate		Total	
	Count	Percent	Count	Percent	Count	Percent	Count	Percent
<i>Alabama</i>	1	0.09%	0	0.00%	0	0.00%	1	0.09%
<i>California</i>	1	0.09%	0	0.00%	0	0.00%	1	0.09%
<i>Colorado</i>	1	0.09%	0	0.00%	0	0.00%	1	0.09%
<i>Dist. Of Columbia</i>	4	0.36%	0	0.00%	0	0.00%	4	0.36%
<i>Florida</i>	1	0.09%	0	0.00%	0	0.00%	1	0.09%
<i>Georgia</i>	6	0.54%	1	0.09%	0	0.00%	7	0.63%
<i>Hawaii</i>	1	0.09%	0	0.00%	0	0.00%	1	0.09%
<i>Maryland</i>	4	0.36%	1	0.09%	0	0.00%	5	0.45%
<i>Massachusetts</i>	1	0.09%	0	0.00%	0	0.00%	1	0.09%
<i>Michigan</i>	2	0.18%	0	0.00%	0	0.00%	2	0.18%
<i>New Jersey</i>	1	0.09%	0	0.00%	0	0.00%	1	0.09%
<i>New York</i>	2	0.18%	0	0.00%	0	0.00%	2	0.18%
<i>Oklahoma</i>	1	0.09%	0	0.00%	0	0.00%	1	0.09%
<i>South Carolina</i>	2	0.18%	0	0.00%	0	0.00%	2	0.18%
<i>Texas</i>	0	0.00%	26	2.32%	0	0.00%	26	2.32%
<i>Virginia</i>	4	0.36%	0	0.00%	0	0.00%	4	0.36%
<i>Washington</i>	1	0.09%	0	0.00%	0	0.00%	1	0.09%
<i>Foreign Countries</i>	3	0.27%	1	0.09%	0	0.00%	4	0.36%
<b>Total State</b>	<b>36</b>	<b>3.21%</b>	<b>29</b>	<b>2.59%</b>	<b>0</b>	<b>0.00%</b>	<b>65</b>	<b>5.80%</b>
<b>Total Residence</b>	<b>953</b>	<b>85.09%</b>	<b>161</b>	<b>14.38%</b>	<b>6</b>	<b>0.54%</b>	<b>1120</b>	<b>100.00%</b>

Yr of Entry	Number In Class	Original Institution										Any UNC Institution									
		After Year 1	After Year 2	After Year 3	After Year 4	After Year 5	After Year 6	After Year 7	After Year 8	After Year 9	After Year 10	After Year 1	After Year 2	After Year 3	After Year 4	After Year 5	After Year 6	After Year 7	After Year 8	After Year 9	After Year 10
Panel A - Retention																					
1998	519	74.2	54.9	46.4	31.8	13.3	4.6	3.7	2.7	1.2	0.4	77.3	59.3	50.5	35.6	16.6	6.6	6.0	4.0	1.9	0.8
1999	799	72.6	60.2	52.9	25.0	9.6	5.5	4.0	2.5	2.5	2.0	75.2	65.7	58.2	29.9	12.4	7.4	4.8	3.1	2.8	2.3
2000	535	71.0	56.8	48.6	31.4	10.8	5.8	3.7	2.4	1.9	1.9	76.1	63.6	55.5	35.9	13.6	7.5	5.0	3.6	2.4	2.4
2001	763	73.9	55.8	51.2	31.8	13.2	7.2	3.1	2.4	1.8	1.2	76.5	59.2	55.2	35.9	15.9	7.9	3.5	2.8	2.2	2.0
2002	734	73.4	59.8	53.0	30.7	14.3	7.4	4.1	2.2	1.4	1.2	75.3	64.7	57.6	34.6	16.1	8.6	4.8	3.0	2.3	2.3
2003	794	72.7	57.4	49.7	30.7	14.1	7.2	3.9	3.7	1.8	1.0	75.9	63.0	55.4	35.5	17.0	8.7	5.0	4.3	2.4	1.6
2004	760	75.3	60.5	52.9	35.9	17.5	6.8	3.4	2.2	1.7	1.3	78.0	63.9	57.0	39.3	19.1	8.0	3.9	2.8	2.2	1.4
2005	835	70.9	55.0	46.1	32.0	14.3	5.7	3.7	3.0	1.9	1.9	73.5	58.7	49.6	35.6	16.5	7.2	4.7	3.6	2.4	2.3
2006	823	73.3	55.5	46.1	28.9	11.8	5.3	3.2	1.6	1.6	.	75.6	60.9	51.9	33.4	14.9	7.5	4.6	2.9	2.3	.
2007	931	69.3	52.5	42.6	26.9	9.9	4.2	2.8	2.3	.	.	73.3	58.6	48.4	31.9	14.0	5.8	3.9	2.7	.	.
2008	579	73.6	53.2	47.3	26.8	9.8	4.0	2.1	.	.	.	79.3	61.3	54.6	32.0	12.8	5.2	2.8	.	.	.
2009	754	69.1	51.7	45.1	24.4	8.5	3.4	.	.	.	.	74.4	59.5	53.1	30.8	12.2	5.3	.	.	.	.
2010	538	72.3	58.6	48.7	27.5	12.6	.	.	.	.	.	77.0	64.9	54.1	31.8	16.2	.	.	.	.	.
2011	647	75.6	55.6	49.9	28.0	.	.	.	.	.	.	80.5	62.4	56.1	34.6	.	.	.	.	.	.
2012	600	71.3	55.8	47.5	.	.	.	.	.	.	.	76.8	61.8	53.5	.	.	.	.	.	.	.
2013	689	74.5	57.5	.	.	.	.	.	.	.	.	77.8	62.4	.	.	.	.	.	.	.	.
2014	468	79.1	.	.	.	.	.	.	.	.	.	82.9	.	.	.	.	.	.	.	.	.
Panel B - Graduation																					
1998	519	0.0	0.0	0.0	12.1	28.5	34.9	38.2	38.9	39.7	39.9	0.0	0.0	0.0	12.5	29.5	36.4	40.1	41.2	42.4	43.0
1999	799	0.0	0.0	0.4	24.4	38.5	42.2	43.2	43.8	44.3	44.7	0.0	0.0	0.4	24.9	40.3	44.9	46.7	47.7	48.2	48.7
2000	535	0.0	0.0	0.6	14.2	31.8	37.0	38.7	40.2	40.7	40.9	0.0	0.0	0.7	15.5	35.0	41.1	43.2	44.9	45.6	45.8
2001	763	0.0	0.0	0.4	15.7	30.4	35.6	38.3	39.4	40.2	40.6	0.0	0.0	0.4	16.1	32.1	38.7	41.5	43.0	43.9	44.3
2002	734	0.0	0.0	1.0	18.4	31.9	38.0	40.6	42.2	43.5	43.7	0.0	0.0	1.0	18.7	34.2	41.1	44.4	46.2	47.5	48.0
2003	794	0.0	0.0	0.6	12.7	25.3	31.5	34.6	35.6	36.4	36.9	0.0	0.0	0.6	13.4	27.7	34.8	38.4	39.7	40.7	41.3
2004	760	0.0	0.0	0.1	11.3	26.2	33.4	37.0	37.6	38.0	38.6	0.0	0.0	0.1	11.7	28.2	35.9	39.9	40.8	41.2	41.8
2005	835	0.0	0.1	0.2	9.3	23.7	30.5	32.7	34.1	35.3	35.7	0.0	0.1	0.2	9.8	25.3	32.7	35.6	37.1	38.6	39.2
2006	823	0.0	0.0	0.2	11.8	25.0	31.0	33.0	34.1	34.9	.	0.0	0.0	0.2	12.5	27.5	34.4	37.2	38.6	40.1	.
2007	931	0.0	0.0	0.1	12.0	27.2	32.1	33.2	33.8	.	.	0.0	0.1	0.2	12.5	29.1	36.0	37.6	38.8	.	.
2008	579	0.0	0.0	0.9	17.1	29.9	34.5	36.4	.	.	.	0.0	0.0	0.9	18.5	34.2	39.7	42.3	.	.	.
2009	754	0.0	0.1	1.7	16.0	27.9	31.7	.	.	.	.	0.0	0.1	1.7	17.5	32.2	37.4	.	.	.	.
2010	538	0.0	0.2	1.1	16.5	26.8	.	.	.	.	.	0.0	0.2	1.1	17.7	28.6	.	.	.	.	.
2011	647	0.0	0.2	1.1	17.0	.	.	.	.	.	.	0.0	0.2	1.1	17.6	.	.	.	.	.	.
2012	600	0.0	1.0	2.3	.	.	.	.	.	.	.	0.0	1.0	2.3	.	.	.	.	.	.	.
2013	689	0.0	1.5	.	.	.	.	.	.	.	.	0.0	1.6	.	.	.	.	.	.	.	.
2014	468	0.0	.	.	.	.	.	.	.	.	.	0.0	.	.	.	.	.	.	.	.	.
Panel C - Persistence																					
1998	519	74.2	54.9	46.4	43.9	41.8	39.5	41.8	41.6	40.8	40.3	77.3	59.3	50.5	48.2	46.1	43.0	46.1	45.3	44.3	43.7
1999	799	72.6	60.2	53.3	49.4	48.2	47.7	47.2	46.3	46.8	46.7	75.2	65.7	58.6	54.8	52.7	52.3	51.4	50.8	50.9	50.9
2000	535	71.0	56.8	49.2	45.6	42.6	42.8	42.4	42.6	42.6	42.8	76.1	63.6	56.3	51.4	48.6	48.6	48.2	48.4	48.0	48.2
2001	763	73.9	55.8	51.6	47.6	43.6	42.9	41.4	41.8	42.1	41.8	76.5	59.2	55.6	52.0	48.0	46.5	45.1	45.7	46.1	46.3
2002	734	73.4	59.8	54.0	49.0	46.2	45.4	44.7	44.4	44.8	45.0	75.3	64.7	58.6	53.3	50.3	49.7	49.2	49.2	49.9	50.3
2003	794	72.7	57.4	50.4	43.5	39.4	38.7	38.5	39.3	38.2	37.9	75.9	63.0	56.0	48.9	44.7	43.5	43.5	44.0	43.1	42.9
2004	760	75.3	60.5	53.0	47.2	43.7	40.3	40.4	39.9	39.7	39.9	78.0	63.9	57.1	51.1	47.2	43.9	43.8	43.6	43.4	43.3
2005	835	70.9	55.1	46.3	41.3	38.0	36.3	36.4	37.1	37.2	37.6	73.5	58.8	49.8	45.4	41.8	39.9	40.2	40.7	41.0	41.4
2006	823	73.3	55.5	46.3	40.7	36.8	36.3	36.2	35.7	36.5	.	75.6	60.9	52.1	45.9	42.4	41.9	41.8	41.6	42.4	.
2007	931	69.3	52.5	42.7	38.9	37.1	36.3	36.0	36.1	.	.	73.3	58.8	48.7	44.4	43.1	41.8	41.5	41.5	.	.
2008	579	73.6	53.2	48.2	43.9	39.7	38.5	38.5	.	.	.	79.3	61.3	55.4	50.4	47.0	44.9	45.1	.	.	.
2009	754	69.1	51.9	46.8	40.5	36.3	35.1	.	.	.	.	74.4	59.7	54.8	48.3	44.4	42.7	.	.	.	.
2010	538	72.3	58.7	49.8	44.1	39.4	.	.	.	.	.	77.0	65.1	55.2	49.4	44.8	.	.	.	.	.
2011	647	75.6	55.8	51.0	45.0	.	.	.	.	.	.	80.5	62.6	57.2	52.2	.	.	.	.	.	.
2012	600	71.3	56.8	49.8	.	.	.	.	.	.	.	76.8	62.8	55.8	.	.	.	.	.	.	.
2013	689	74.5	58.9	.	.	.	.	.	.	.	.	77.8	64.0	.	.	.	.	.	.	.	.
2014	468	79.1	.	.	.	.	.	.	.	.	.	82.9	.	.	.	.	.	.	.	.	.

# Faculty & Staff

## Personnel

A total of 894 individuals worked at Fayetteville State University as of October 1, 2016. For the past year, of that number, 359 (40%) were faculty (includes full or part-time faculty, administrators with faculty status, retirees on contract, visiting faculty, and coaches with faculty status). The remaining 535 (60%) were administrators or support personnel. Fifty-three percent of the employees were black, 19% white, 5% Asian, 3% Hispanic, 1% Amer. Indian, 1% Non-Resident Alien, and 18% were of an unknown race. Fifty-seven percent of employees were women and 43% were men.



## Faculty

Fayetteville State University had a total of 359 teaching faculty (256 full-time and 103 part-time) as of October 1, 2016. Of the 256 full-time faculty, 84% held the doctorate or 1<sup>st</sup> professional degree. Of this number, 68% had earned tenure, while 30% were on track. Fifty-three percent of full-time faculty members were male, and 47% were female. Thirty-seven percent of the faculty body were black, 29% white, 12% Asian, 2% Hispanic, 4% Non-Resident Alien, and 16% were of an unknown race. The assistant professor rank accounted for 29% of the faculty, while close to 33% were classified as associate professors. The mean salary of AAUP Faculty (with 11/12 month converted to 9 month) is \$81,092 for males and \$78,650 for females.

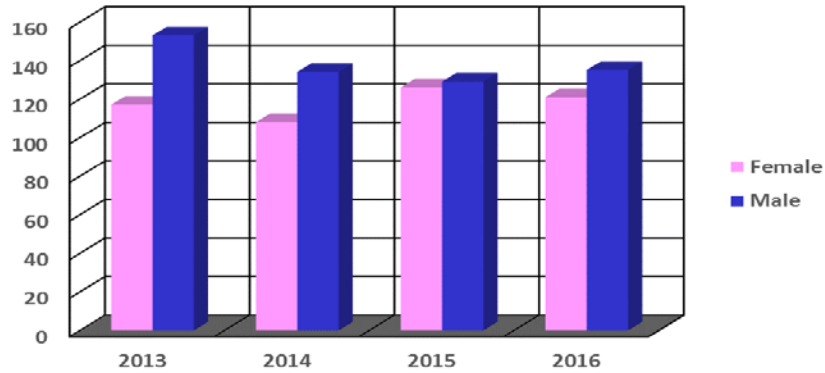


***2016-17 Board of Governors' Award for Excellence in Teaching  
Dr. Heather Griffiths***

***2016-17 Teacher of the Year Award  
Dr. Ji Young Kim***

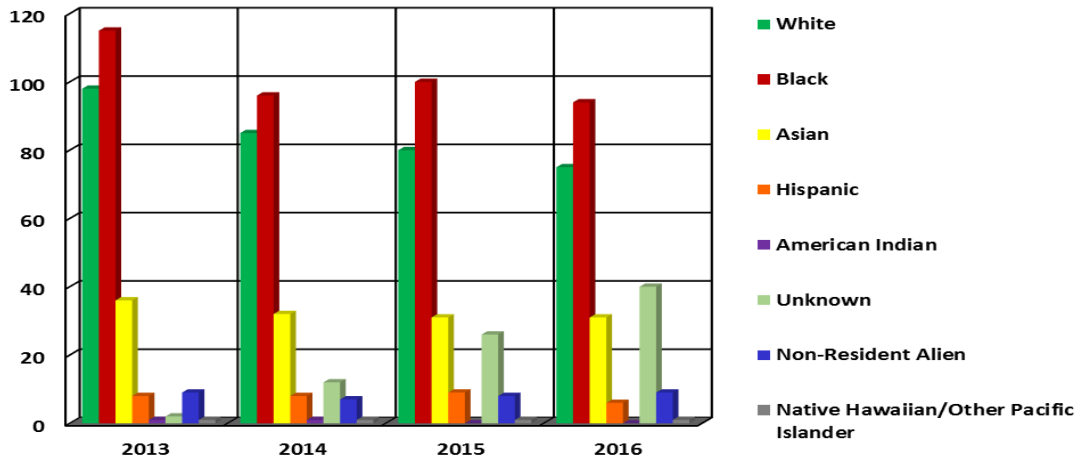
***2016-17 Staff of the Year  
Ms. Carlitta Moore***

## Fall 2013-2016 AAUP Faculty Full-time By Gender



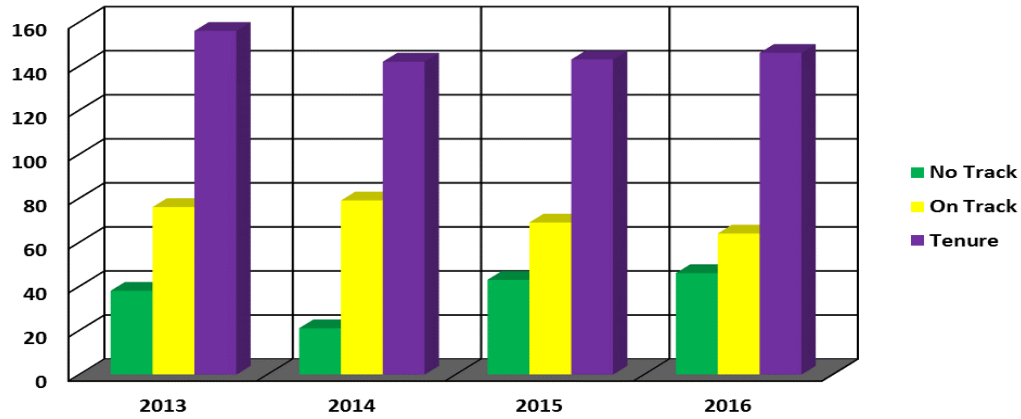
Gender	2013	2014	2015	2016
Female	117	108	126	121
Male	153	134	129	135
<b>Total</b>	<b>270</b>	<b>242</b>	<b>255</b>	<b>256</b>

## By Race



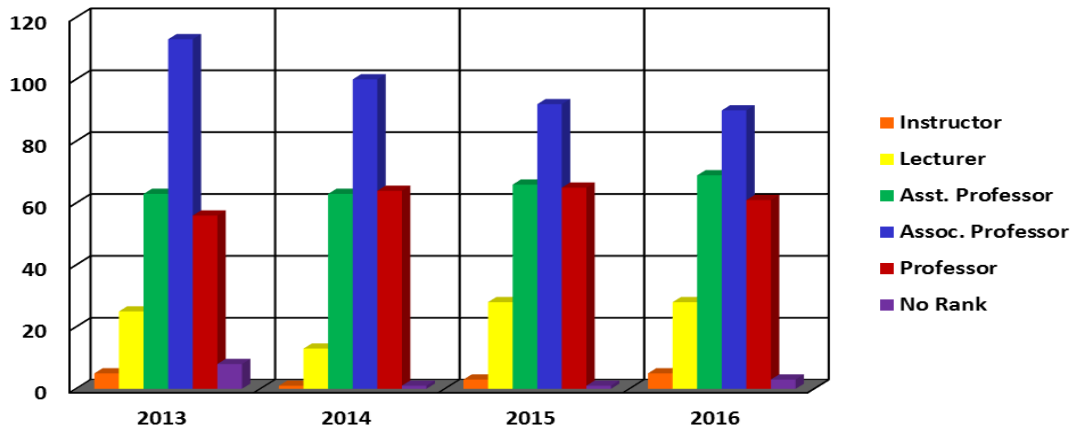
Race	2013	2014	2015	2016
White	98	85	80	75
Black	115	96	100	94
Asian	36	32	31	31
Hispanic	8	8	9	6
American Indian	1	1	0	0
Unknown	2	12	26	40
Non-Resident Alien	9	7	8	9
Native Hawaiian/Other Pacific Islander	1	1	1	1
<b>Total</b>	<b>270</b>	<b>242</b>	<b>255</b>	<b>256</b>

## Fall 2013-2016 AAUP Faculty Full-time By Tenure Status



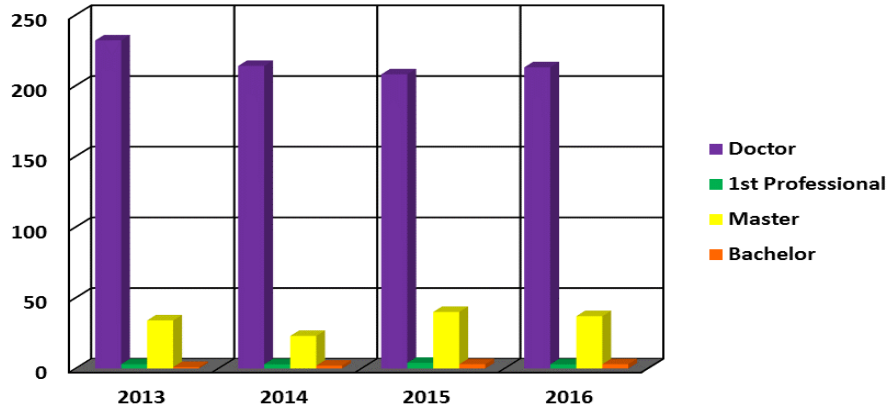
Status	2013	2014	2015	2016
No Track	38	21	43	46
On Track	76	79	69	64
Tenure	156	142	143	146
<b>Total</b>	<b>270</b>	<b>242</b>	<b>255</b>	<b>256</b>

## By Position



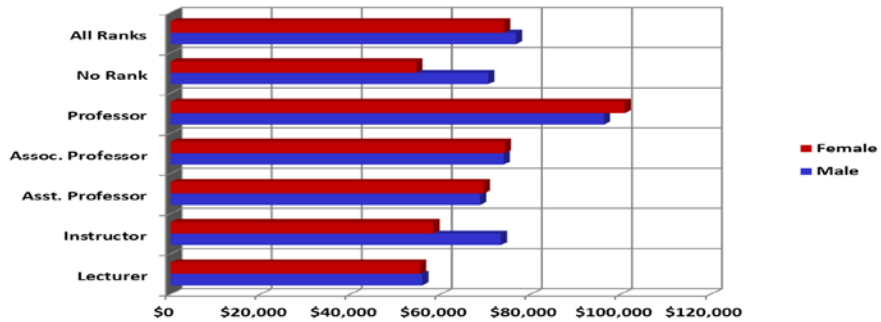
Position	2013	2014	2015	2016
Instructor	5	1	3	5
Lecturer	25	13	28	28
Asst. Professor	63	63	66	75
Assoc. Professor	113	100	92	85
Professor	56	64	65	60
No Rank	8	1	1	3
<b>Total</b>	<b>270</b>	<b>242</b>	<b>255</b>	<b>256</b>

## Fall 2012-2015 AAUP Faculty Full-time By Degree



Degree	2013	2014	2015	2016
Doctor	232	214	208	213
1 <sup>st</sup> Professional	3	3	4	3
Master	34	23	40	37
Bachelor	1	2	3	3
<b>Total</b>	<b>270</b>	<b>242</b>	<b>255</b>	<b>256</b>

## By Fall 2013 AAUP Faculty Full-time By Average Salary



Salary	Male	Female
Lecturer	\$55,849	\$55,335
Instructor	\$73,333	\$58,342
Asst. Professor	\$68,666	\$69,523
Assoc. Professor	\$73,639	\$74,199
Professor	\$96,189	\$100,803
No Rank	\$70,493	\$54,511
<b>All Ranks</b>	<b>\$76,642</b>	<b>\$74,017</b>



## Fall 2014 AAUP Faculty Full-time By Average Salary

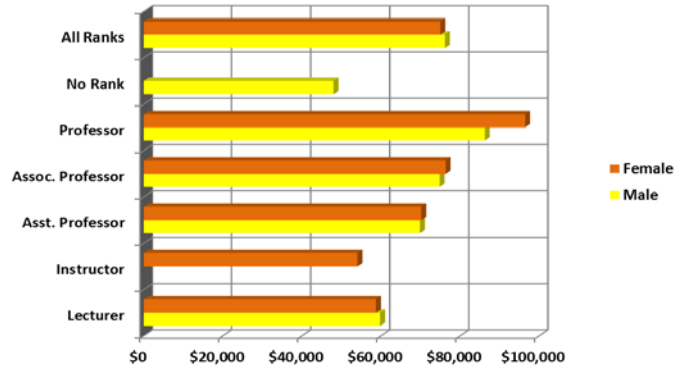
---



Salary	Male	Female
Lecturer	\$55,755	\$59,646
Instructor	\$0	\$58,000
Asst. Professor	\$69,753	\$70,687
Assoc. Professor	\$74,700	\$74,817
Professor	\$87,346	\$97,778
No Rank	\$0	\$72,500
All Ranks	\$76,671	\$77,110

## By Fall 2015 AAUP Faculty Full-time By Average Salary

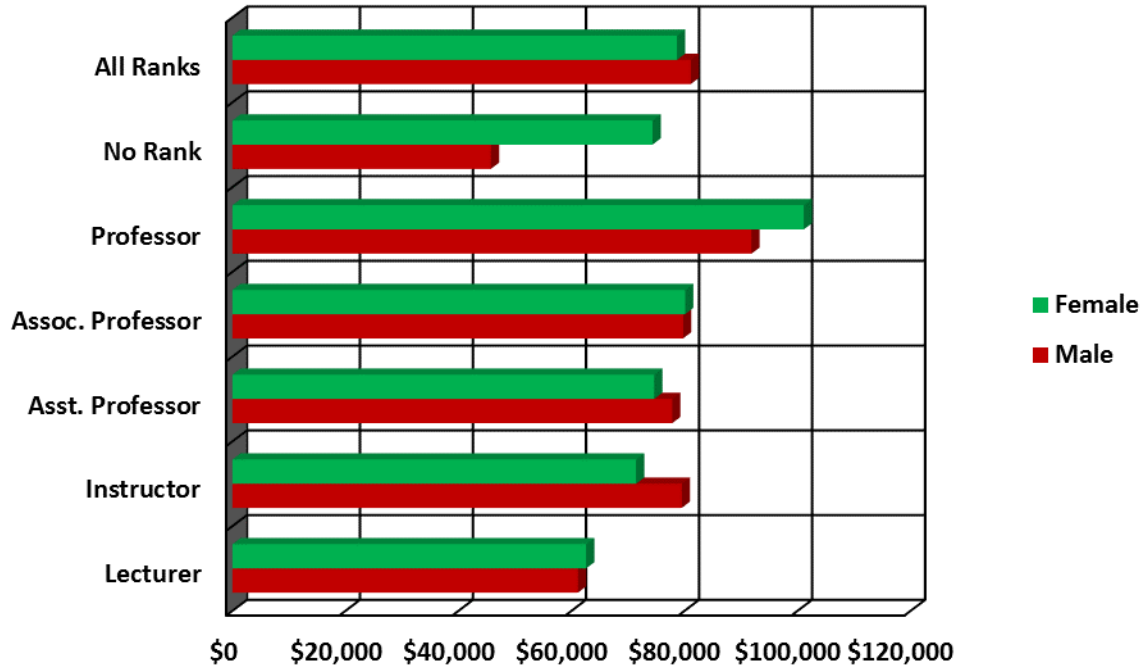
---



Salary	Male	Female
Lecturer	\$59,778	\$58,715
Instructor	\$0	\$54,038
Asst. Professor	\$69,843	\$70,157
Assoc. Professor	\$74,810	\$76,319
Professor	\$86,217	\$96,434
No Rank	\$48,000	\$0
All Ranks	\$76,150	\$74,989

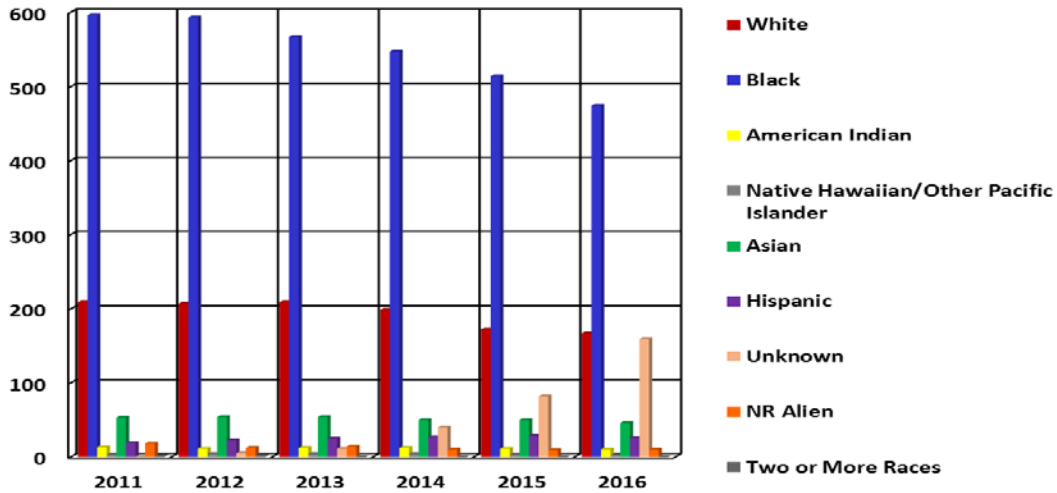
## Fall 2016 AAUP Faculty Full-time By Average Salary

---



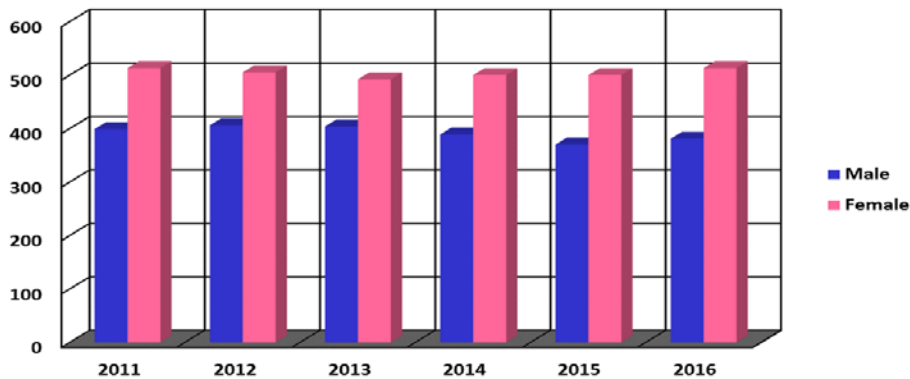
Salary	Male	Female
Lecturer	\$61,138	\$62,581
Instructor	\$79,500	\$71,415
Asst. Professor	\$77,801	\$74,613
Assoc. Professor	\$79,727	\$80,096
Professor	\$91,817	\$101,092
No Rank	\$45,724	\$74,323
All Ranks	\$81,092	\$78,650

## Fall 2011-2016 Employees By Race



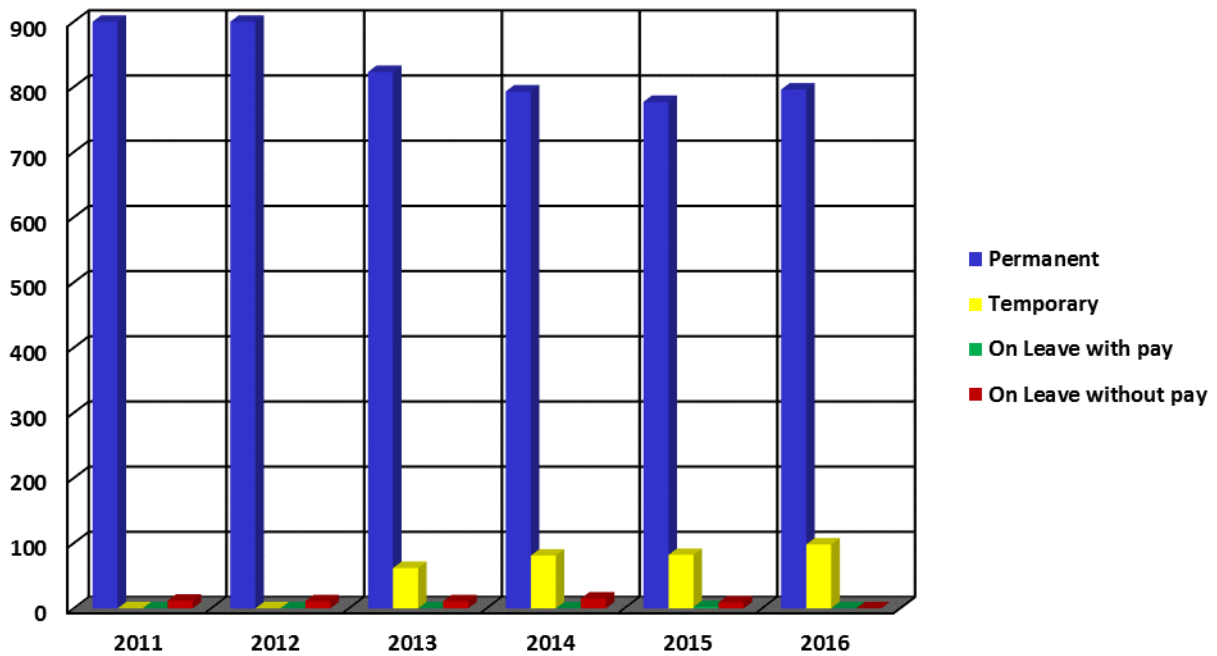
Race	2011	2012	2013	2014	2015	2016
White	209	207	209	199	174	172
Black	596	593	567	547	517	477
American Indian	13	11	12	12	9	10
Native Hawaiian/Other Pacific Islander	3	4	4	4	3	2
Asian	53	54	54	50	49	46
Hispanic	19	23	25	27	29	27
Unknown	0	5	11	40	82	159
NR Alien	18	12	14	10	10	11
Two or More Races	1	2	0	0	0	0
<b>Total</b>	<b>912</b>	<b>911</b>	<b>896</b>	<b>889</b>	<b>873</b>	<b>904</b>

## By Gender



Gender	2011	2012	2013	2014	2015	2016
Male	399	406	404	389	367	386
Female	513	505	492	500	506	518
<b>Total</b>	<b>912</b>	<b>911</b>	<b>896</b>	<b>889</b>	<b>873</b>	<b>904</b>

## Fall 2011-2016 Employees By Status



Status	2011	2012	2013	2014	2015	2016
Permanent	900	900	823	793	777	796
Temporary	0	0	62	81	94	108
On Leave with pay	0	0	0	0	2	0
On Leave without pay	12	11	11	15	0	0
<b>Total</b>	<b>912</b>	<b>911</b>	<b>896</b>	<b>889</b>	<b>873</b>	<b>904</b>

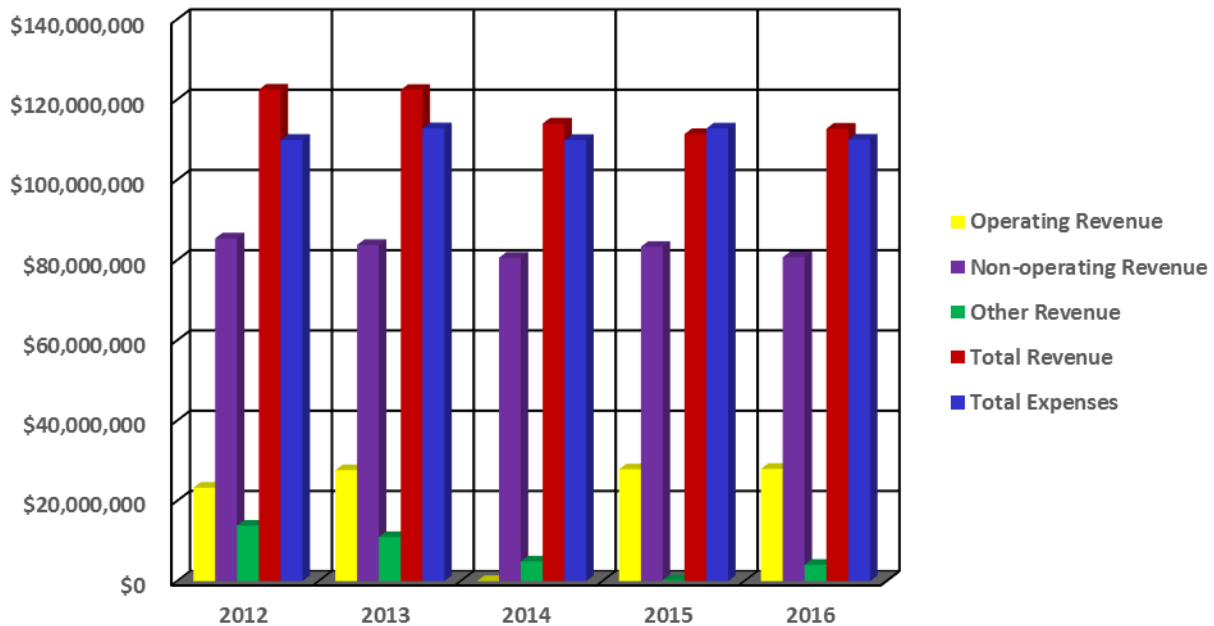
# Finances

## Finance

The financial statements report information about the university as a whole. The university's financial position remained relatively stable during the fiscal year ending June 30, 2016. The university had an operating budget of 112,820,060.



## Finance Report Fiscal Years 2012-2016



Type	2012	2013	2014	2015	2016
Operating Revenue	\$23,287,433	\$27,650,998	\$28,543,529	\$27,870,753	\$27,964,643
Non-operating Revenue	\$85,405,030	\$83,771,479	\$80,587,700	\$83,312,132	\$80,735,721
Other Revenue	\$13,818,064	\$10,995,558	\$4,914,928	\$254,369	\$4,068,851
<b>Total Revenue</b>	<b>\$122,510,527</b>	<b>\$122,418,035</b>	<b>\$114,046,157</b>	<b>\$111,437,254</b>	<b>\$112,769,215</b>
<b>Total Expenses</b>	<b>\$109,958,683</b>	<b>\$112,838,882</b>	<b>\$109,955,518</b>	<b>\$112,820,060</b>	<b>\$110,031,637</b>

**Fayetteville State University  
IPEDS Finance Survey  
Fiscal Year 2011**

Line #	Revenues and other Additions	Current Year Amount	Prior Year Amount
	<b>Operating Revenue</b>		
01	Tuition & Fees, after deducting discounts and allowances	11,742,182	12,698,336
	<i>Grants &amp; contracts - operating:</i>		
02	Federal operating grants & contracts	265,714	118,250
03	State operating grants & contracts	0	0
04	Local/private operating grants & contracts		
05	Sales & services of auxiliary enterprises after deducting discounts & allowances	6,099,192	8,066,329
06	Sales & services of hospitals, after deducting discounts and allowances	0	0
07	Independent operations	0	0
08	Other sources	362,682	148,802
09	Total operating revenues	18,885,187	21,814,873
	<b>Non-Operating Revenues</b>		
10	Federal appropriations	0	0
11	State appropriations	48,356,665	52,043,024
12	Local appropriations, education district taxes		
	<i>Grants - non-operating</i>		
13	Federal non-operating grants	30,223,519	27,099,294
14	State non-operating grants	6,356,646	7,273,587
15	Local non-operating grants	14,123	51,109
16	Gifts, including contributions from affiliated organizations	1,269,822	1,423,770
17	Investment income	1,051,537	831,726
18	Other non-operating revenues	3,228,907	2,808,109
19	Total non-operating revenues	90,501,219	91,530,619
	<b>Other Revenues and additions</b>		
20	Capital appropriations	0	0
21	Capital grants and gifts	3,346,149	5,766,638
22	Additions to permanent endowments	794,224	756,420
23	Other revenues and additions	0	0
24	Total other revenues and additions	4,140,373	6,523,058
25	Total all revenues and other additions	113,526,779	119,868,550
	<b>Expenses and other Deductions</b>		
	<b>Operating Expenses</b>		
01	Instruction	40,868,571	36,184,236
02	Research	1,126,115	916,971
03	Public service	4,614,231	3,728,233
05	Academic support	14,046,660	11,502,347
06	Student services	5,595,843	4,512,557
07	Institutional Support	12,019,585	11,333,630
08	Operation and maintenance of plant	0	8,494,773
10	Scholarships and fellowships expenses, excluding discounts and allowances	14,000,963	11,111,082
11	Auxiliary enterprises	18,212,041	15,351,170
12	Hospital services	0	0
13	Independent operations	0	0
14	Other expenses and deductions	69,685	0
19	Total expenses and deductions	110,553,694	106,430,384

**Fayetteville State University  
IPEDS Finance Survey  
Fiscal Year 2012**

Line #	Revenues and other Additions	Current Year Amount	Prior Year Amount
	<b>Operating Revenue</b>		
01	Tuition & Fees, after deducting discounts and allowances	14,959,067	11,742,182
	<i>Grants &amp; contracts - operating:</i>		
02	Federal operating grants & contracts	232,956	265,714
03	State operating grants & contracts	0	0
04	Local/private operating grants & contracts		
05	Sales & services of auxiliary enterprises after deducting discounts & allowances	7,210,760	6,099,192
06	Sales & services of hospitals, after deducting discounts and allowances	0	0
07	Independent operations	0	0
08	Other sources	459,376	362,682
09	Total operating revenues	23,287,433	18,885,187
	<b>Non-Operating Revenues</b>		
10	Federal appropriations	0	0
11	State appropriations	50,383,034	48,356,665
12	Local appropriations, education district taxes		
	<i>Grants - non-operating</i>		
13	Federal non-operating grants	32,847,710	30,223,519
14	State non-operating grants	1,017,516	6,356,646
15	Local non-operating grants	117,277	14,123
16	Gifts, including contributions from affiliated organizations	780,979	1,269,822
17	Investment income	233,526	1,051,537
18	Other non-operating revenues	24,988	3,228,907
19	Total non-operating revenues	85,405,030	90,501,219
	<b>Other Revenues and additions</b>		
20	Capital appropriations	0	0
21	Capital grants and gifts	13,041,865	3,346,149
22	Additions to permanent endowments	776,199	794,224
23	Other revenues and additions	0	0
24	Total other revenues and additions	13,818,064	4,140,373
25	Total all revenues and other additions	122,510,527	113,526,779
	<b>Expenses and other Deductions</b>		
	<b>Operating Expenses</b>		
01	Instruction	41,344,729	40,868,571
02	Research	998,527	1,126,115
03	Public service	5,327,138	4,614,231
05	Academic support	1,276,3001	14,046,660
06	Student services	5,560,469	5,595,843
07	Institutional Support	11,556,503	12,019,585
08	Operation and maintenance of plant	0	0
10	Scholarships and fellowships expenses, excluding discounts and allowances	13,368,740	14,000,963
11	Auxiliary enterprises	18,616,012	18,212,041
12	Hospital services	0	0
13	Independent operations	0	0
14	Other expenses and deductions	423,564	69,685
19	Total expenses and deductions	109,958,683	110,553,694



**Fayetteville State University  
IPEDS Finance Survey  
Fiscal Year 2013**

Line #	Revenues and other Additions	Current Year Amount	Prior Year Amount
	<b>Operating Revenue</b>		
01	Tuition & Fees, after deducting discounts and allowances <i>lk</i>	16,959,618	14,959,067
02	Federal operating grants & contracts	897	232,956
03	State operating grants & contracts		0
04	Local/private operating grants & contracts	0	0
05	Sales & services of auxiliary enterprises after deducting discounts & allowances	8,510,503	7,210,760
06	Sales & services of hospitals, after deducting discounts and allowances	0	0
07	Independent operations		0
08	Other sources	1,568,325	459,376
09	Total operating revenues	27,650,998	23,287,433
	<b>Non-Operating Revenues</b>		
10	Federal appropriations	0	0
11	State appropriations	49,782,641	50,383,034
12	Local appropriations, education district taxes <i>Grants - non-operating</i>	0	
13	Federal non-operating grants	31,185,529	32,847,710
14	State non-operating grants	614,603	1,017,516
15	Local non-operating grants	0	117,277
16	Gifts, including contributions from affiliated organizations	849,617	780,979
17	Investment income	1,267,880	233,526
18	Other non-operating revenues	71,209	24,988
19	Total non-operating revenues	83,771,479	85,405,030
	<b>Other Revenues and additions</b>		
20	Capital appropriations	0	0
21	Capital grants and gifts	10,084,402	13,041,865
22	Additions to permanent endowments	911,156	776,199
23	Other revenues and additions	0	0
24	Total other revenues and additions	10,995,558	13,818,064
25	Total all revenues and other additions	122,418,035	122,510,527
	<b>Expenses and other Deductions</b>		
	<b>Operating Expenses</b>		
01	Instruction	42,427,967	41,344,729
02	Research	1,033,242	998,527
03	Public service	7,197,179	5,327,138
05	Academic support	11,898,417	12,763,001
06	Student services	5,884,474	5,560,469
07	Institutional Support	11,352,467	11,556,503
08	Operation and maintenance of plant	0	0
10	Scholarships and fellowships expenses, excluding discounts and allowances	11,645,804	13,368,740
11	Auxiliary enterprises	21,210,538	18,616,012
12	Hospital services	0	0
13	Independent operations	0	0
14	Other expenses and deductions	188,794	423,564
19	Total expenses and deductions	112,838,882	109,958,683

**Fayetteville State University  
IPEDS Finance Survey  
Fiscal Year 2014**

Line #	Revenues and other Additions	Current Year Amount	Prior Year Amount
	<b>Operating Revenue</b>		
01	Tuition & Fees, after deducting discounts and allowances	17,653,511	16,959,618
	<i>Grants &amp; contracts - operating:</i>		
02	Federal operating grants & contracts	656,781	897
03	State operating grants & contracts		
04	Local/private operating grants & contracts	0	0
05	Sales & services of auxiliary enterprises after deducting discounts & allowances	8,924,147	8,510,503
06	Sales & services of hospitals, after deducting discounts and allowances		0
07	Independent operations		
08	Other sources	720,164	1,568,325
09	Total operating revenues	28,543,529	27,650,998
	<b>Non-Operating Revenues</b>		
10	Federal appropriations		0
11	State appropriations	49,466,570	49,782,641
12	Local appropriations, education district taxes		0
	<i>Grants - non-operating</i>		
13	Federal non-operating grants	16,544,795	31,185,529
14	State non-operating grants	11,746,911	614,603
15	Local non-operating grants		0
16	Gifts, including contributions from affiliated organizations	1,011,336	849,617
17	Investment income	1,818,088	1,267,880
18	Other non-operating revenues	0	71,209
19	Total non-operating revenues	80,587,700	83,771,479
	<b>Other Revenues and additions</b>		
20	Capital appropriations		0
21	Capital grants and gifts	4,002,458	10,084,402
22	Additions to permanent endowments	912,470	911,156
23	Other revenues and additions	0	0
24	Total other revenues and additions	4,914,928	10,995,558
25	Total all revenues and other additions	114,046,157	122,418,035
	<b>Expenses and other Deductions</b>		
	<b>Operating Expenses</b>		
01	Instruction	43,157,637	42,427,967
02	Research	841,163	1,033,242
03	Public service	5,468,344	7,197,179
05	Academic support	11,023,846	11,898,417
06	Student services	4,668,499	5,884,474
07	Institutional Support	11,283,066	11,352,467
08	Operation and maintenance of plant	0	0
10	Scholarships and fellowships expenses, excluding discounts and allowances	12,366,520	11,645,804
11	Auxiliary enterprises	21,005,888	21,210,538
12	Hospital services		0
13	Independent operations		0
14	Other expenses and deductions	140,555	188,794
19	Total expenses and deductions	109,955,518	112,838,882

**Fayetteville State University  
IPEDS Finance Survey  
Fiscal Year 2015**

Line #	Revenues and other Additions	Current Year Amount	Prior Year Amount
	<b>Operating Revenue</b>		
01	Tuition & Fees, after deducting discounts and allowances	17,582,214	17,653,511
	<i>Grants &amp; contracts - operating:</i>		
02	Federal operating grants & contracts	783,144	656,781
03	State operating grants & contracts		
04	Local/private operating grants & contracts	0	0
05	Sales & services of auxiliary enterprises after deducting discounts & allowances	8,245,587	8,924,147
06	Sales & services of hospitals, after deducting discounts and allowances		0
07	Independent operations		
08	Other sources	577,161	720,164
09	Total operating revenues	27,870,753	28,543,529
	<b>Non-Operating Revenues</b>		
10	Federal appropriations		
11	State appropriations	49,320,614	49,466,570
12	Local appropriations, education district taxes		
	<i>Grants - non-operating</i>		
13	Federal non-operating grants	16,454,500	16,544,795
14	State non-operating grants	15,184,748	11,746,911
15	Local non-operating grants		
16	Gifts, including contributions from affiliated organizations	1,547,664	1,011,336
17	Investment income	804,606	1,818,088
18	Other non-operating revenues		0
19	Total non-operating revenues	83,312,132	80,587,700
	<b>Other Revenues and additions</b>		
20	Capital appropriations		
21	Capital grants and gifts	33,618	4,002,458
22	Additions to permanent endowments	220,751	912,470
23	Other revenues and additions	0	0
24	Total other revenues and additions	254,369	4,914,928
25	Total all revenues and other additions	111,437,254	114,046,157
	<b>Expenses and other Deductions</b>		
	<b>Operating Expenses</b>		
01	Instruction	43,383,671	43,157,637
02	Research	1,225,534	841,163
03	Public service	4,230,208	5,468,344
05	Academic support	12,179,506	11,023,846
06	Student services	5,447,151	4,668,499
07	Institutional Support	11,294,531	11,283,066
08	Operation and maintenance of plant	0	0
10	Scholarships and fellowships expenses, excluding discounts and allowances	11,339,374	12,366,520
11	Auxiliary enterprises	23,370,029	21,005,888
12	Hospital services		
13	Independent operations		
14	Other expenses and deductions	350,056	140,555
19	Total expenses and deductions	112,820,060	109,955,518

**Fayetteville State University  
IPEDS Finance Survey  
Fiscal Year 2016**

Line #	Revenues and other Additions	Current Year Amount	Prior Year Amount
	<b>Operating Revenue</b>		
01	Tuition & Fees, after deducting discounts and allowances	17,846,199	17,582,214
	<i>Grants &amp; contracts - operating:</i>		
02	Federal operating grants & contracts	194,643	783,144
03	State operating grants & contracts		
04	Local/private operating grants & contracts	0	0
05	Sales & services of auxiliary enterprises after deducting discounts & allowances	9,145,938	8,245,587
06	Sales & services of hospitals, after deducting discounts and allowances		
07	Independent operations		
08	Other sources	19,124	577,161
09	Total operating revenues	27,964,643	27,870,753
	<b>Non-Operating Revenues</b>		
10	Federal appropriations		0
11	State appropriations	48,405,925	49,320,614
12	Local appropriations, education district taxes		
	<i>Grants - non-operating</i>		
13	Federal non-operating grants	16,686,837	16,454,500
14	State non-operating grants	14,391,461	15,184,748
15	Local non-operating grants		
16	Gifts, including contributions from affiliated organizations	1,293,945	1,547,664
17	Investment income	-42,447	804,606
18	Other non-operating revenues		
19	Total non-operating revenues	80,735,721	83,312,132
	<b>Other Revenues and additions</b>		
20	Capital appropriations		
21	Capital grants and gifts	939,273	33,618
22	Additions to permanent endowments	484,553	220,751
23	Other revenues and additions	1,234,725	0
24	Total other revenues and additions	4,068,851	254,369
25	Total all revenues and other additions	112,769,215	111,437,254
	<b>Expenses and other Deductions</b>		
	<b>Operating Expenses</b>		
01	Instruction	42,131,591	43,383,671
02	Research	1,102,301	1,225,534
03	Public service	3,482,494	4,230,208
05	Academic support	10,097,001	12,179,506
06	Student services	7,401,349	5,447,151
07	Institutional Support	13,106,611	11,294,531
08	Operation and maintenance of plant	0	0
10	Scholarships and fellowships expenses, excluding discounts and allowances	10,829,358	11,339,374
11	Auxiliary enterprises	21,634,737	23,370,029
12	Hospital services		
13	Independent operations		
14	Other expenses and deductions	246,195	350,056
19	Total expenses and deductions	110,031,637	112,820,060

**DETAIL ESTIMATED FEE SHEET FALL 2016/SPRING2017**

Tuition, fees, and room and board charges are due the last day of Registration for each semester or term.

<b>2016-17 Tuition and Fees</b>					
<b>Undergraduate</b>	<b>Semester Cost</b>				
<b>Credit hours taken</b>	<b>1-5</b>	<b>6-8</b>	<b>9-11</b>	<b>12+</b>	<b>Yearly</b>
In State Tuition	365.35	730.69	1,096.04	1,461.38	2,922.76
Out of State Tuition	1,816.38	3,632.75	5,449.13	7,265.50	14,531.00
<b>Fees</b>					
<a href="#">Athletic</a>	83.50	167.00	250.50	334.00	668.00
<a href="#">Health</a>	25.13	50.25	75.38	100.50	201.00
<a href="#">Education and Technology Fee</a>	45.00	90.00	135.00	180.00	360.00
<a href="#">Student Activities</a>	67.88	135.75	203.63	271.50	543.00
<a href="#">Book Rental Fee</a>	100.00	100.00	100.00	190.00	380.00
<a href="#">Student Government Association</a>	0.12	0.25	0.38	0.50	1.00
<b>Sub-Total General Fees</b>	<b>321.63</b>	<b>543.25</b>	<b>764.89</b>	<b>1,076.50</b>	<b>2,153.00</b>
Indebtedness Fee	41.88	83.75	125.63	167.50	335.00
Bronco Card Fee	12.00	12.00	12.00	12.00	24.00
Campus Security Fee	3.75	7.50	11.25	15.00	30.00
Student Medical Insurance	0.00	1,111.00	1,111.00	1,111.00	2,222.00
<b>Sub-Total Other Fees</b>	<b>57.63</b>	<b>1,214.25</b>	<b>1,259.88</b>	<b>1,305.50</b>	<b>2,611.00</b>
<b>Sub-Total Fees</b>	<b>379.26</b>	<b>1,757.50</b>	<b>2,024.77</b>	<b>2,382.00</b>	<b>4,764.00</b>
<b>Total Tuition and Fees (Non Boarder)</b>					
In State	<b>744.61</b>	<b>2,488.19</b>	<b>3,120.81</b>	<b>3,843.38</b>	<b>7,686.76</b>
Out of State	<b>2,195.64</b>	<b>5,390.25</b>	<b>7,473.90</b>	<b>9,647.50</b>	<b>19,295.00</b>
<b>Meal Plans Declining Balance</b>					
<b>All Access \$240 per year</b>	1,685.00	1,685.00	1,685.00	1,685.00	3,370.00
<b>240 Block \$280 per year</b>	1,523.00	1,523.00	1,523.00	1,523.00	3,046.00
<b>140 Block \$400 per year</b>	1,358.00	1,358.00	1,358.00	1,358.00	2,716.00
<b>Plus an additional 8% sales tax</b>					
<b>Resident Halls Rates:</b>					
<b>Housing-Regular Halls</b>	1,939.50	1,939.50	1,939.50	1,939.50	3,879.00
<b>Housing-Vance Hall</b>	2,240.00	2,240.00	2,240.00	2,240.00	4,480.00
<b>Renaissance - Double</b>	2,984.00	2,984.00	2,984.00	2,984.00	5,968.00
<b>Renaissance - Quad</b>	3,088.00	3,088.00	3,088.00	3,088.00	6,176.00
<b>Total Charges/Boarder Housing &amp; All Access-Meal Plan</b>					
In State	<b>4,369.11</b>	<b>6,112.69</b>	<b>6,745.31</b>	<b>7,467.88</b>	<b>14,935.76</b>
Out of State	<b>5,820.14</b>	<b>9,014.75</b>	<b>11,098.40</b>	<b>13,272.00</b>	<b>26,544.00</b>

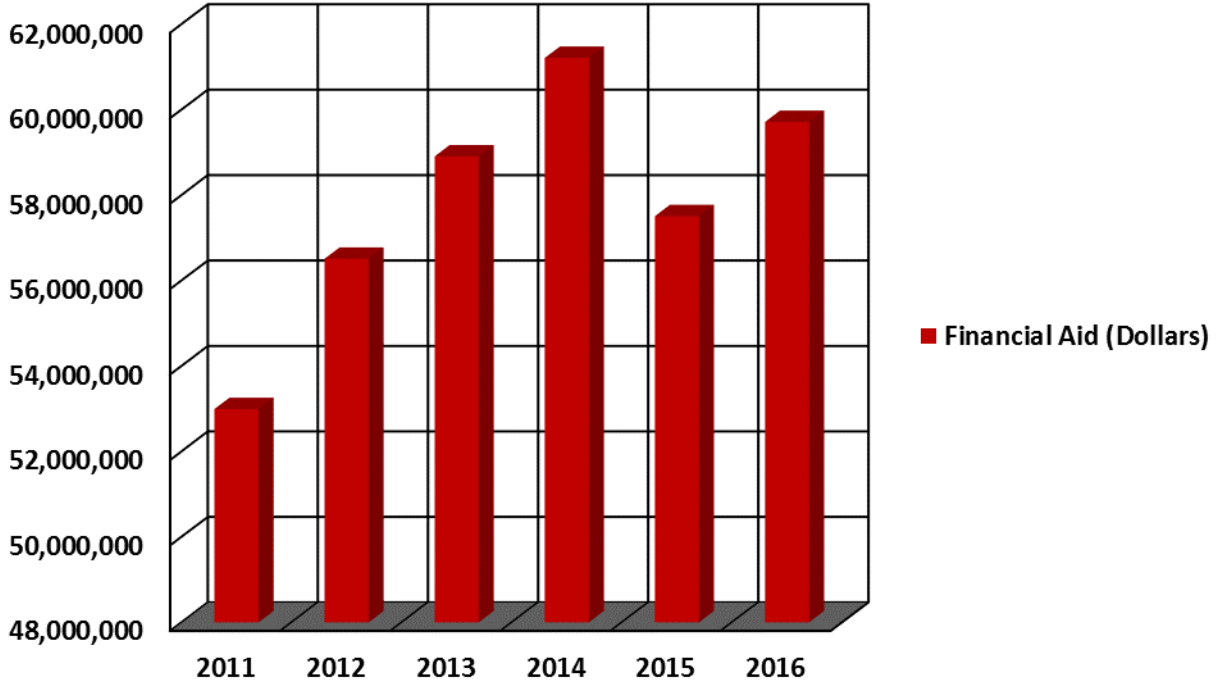
DETAIL ESTIMATED FEE SHEET FALL 2016/SPRING2017

Tuition, fees, and room and board charges are due the last day of Registration for each semester or term.

Graduate		Semester Cost					
Credit hours taken	1-2	3-5	6-8	9	12+	Yearly	
In State Tuition	421.32	842.64	1,263.96	1,685.28	1,685.28	3,370.56	
Out of State Tuition	1,777.38	3,554.75	5,332.13	7,109.50	7,109.50	14,219.00	
<b>Fees</b>							
<a href="#">Athletic</a>	83.50	167.00	250.50	334.00	334.00	668.00	
<a href="#">Health</a>	25.13	50.25	75.38	100.50	100.50	201.00	
<a href="#">Education and Technology Fee</a>	45.00	90.00	135.00	180.00	180.00	360.00	
<a href="#">Student Activities</a>	67.88	135.75	203.63	271.50	271.50	543.00	
<a href="#">Book Rental Fee</a>	100.00	100.00	100.00	100.00	190.00	380.00	
<a href="#">Student Government Association</a>	0.12	0.25	0.38	0.50	0.50	1.00	
<b>Sub-Total General Fees</b>	<b>321.63</b>	<b>543.25</b>	<b>764.89</b>	<b>986.50</b>	<b>1,076.50</b>	<b>2,153.00</b>	
Indebtedness Fee	41.88	83.75	125.63	167.50	167.50	335.00	
Student Medical Insurance	0.00	0.00	1,111.00	1,111.00	1,111.00	2,222.00	
Bronco Card Fee	12.00	12.00	12.00	12.00	12.00	24.00	
Campus Security Fee	3.75	7.50	11.25	15.00	15.00	30.00	
<b>Sub-Total Other Fees</b>	<b>57.63</b>	<b>103.25</b>	<b>1,259.88</b>	<b>1,305.50</b>	<b>1,305.50</b>	<b>2,611.00</b>	
<b>Sub-Total Fees</b>	<b>379.26</b>	<b>646.50</b>	<b>2,024.77</b>	<b>2,292.00</b>	<b>2,382.00</b>	<b>4,764.00</b>	
<b>Total Tuition and Fees</b>							
<b>In State</b>	<b>800.58</b>	<b>1,489.14</b>	<b>3,288.73</b>	<b>3,977.28</b>	<b>4,067.28</b>	<b>8,134.56</b>	
<b>Out of State</b>	<b>2,156.64</b>	<b>4,201.25</b>	<b>7,356.90</b>	<b>9,401.50</b>	<b>9,491.50</b>	<b>18,983.00</b>	
<p>These fees are subject to change by the N.C. General Assembly, by the UNC Board of Governors or Fayetteville State University. Notification of any changes will be published as soon as possible.</p>							

## Financial Aid 2011-2016 By Dollars

---



Year	Financial Aid (Dollars)
2011	52,991,326
2012	56,508,582
2013	58,905,536
2014	61,210,675
2015	57,507,702
2016	59,712,225

**Financial Aid Comparative Statistics**

	2012-13	2013-14	2014-15	2015-16	Change (2014-15 and 2015-16)	% Change (2014-15 and 2015-16)
<b>Awards</b>						
FA Federal Pell Grant	6,594	6,902	6,619	6,855	236	3.6%
FB Federal Supplemental Educational Opportunity Grant (SEOG)	2,149	2,271	1,770	1,437	-333	( 18.8%)
FC Federal Work Study (FWS)	460	583	646	482	-164	( 25.4%)
FD Federal Perkins Loan	108	132	104	91	-13	( 12.5%)
FI Federal Direct Loan Program (FDLP)-Subsidized Stafford	7,361	7,335	6,835	6,647	-188	( 2.8%)
FJ FDLP-Unsubsidized Stafford	8,376	8,078	7,270	7,210	-60	( 0.8%)
FK FDLP-PLUS	103	207	278	517	239	86.0%
FL FDLP-Grad PLUS	0	0	0	3	3	0
FT DC Tuition Assistance Grant (TAG)	65	80	55	56	1	1.8%
FV Federal Teach Grant (but actually a loan)	0	0	0	18	18	0
F7 Other federal loan	40	0	0	0	0	0
F8 Other federal forgivable loan	0	0	0	24	24	0
SB UNC Campus Scholarship Program (SEAA Administered)	306	299	293	236	-57	( 19.5%)
SE Millennial Teaching Scholarship/Loan (forgivable loan)	2	0	0	0	0	0
SH Education Lottery Scholarship (CFI Administered)	634	653	635	705	70	11.0%
SP Nurse Scholars Program (forgivable loan)	3	0	0	0	0	0
SQ Principal Fellows Program (forgivable loan)	4	10	12	6	-6	( 50.0%)
SR Prospective Teacher Scholarship Loan (forgivable loan)	8	6	3	0	-3	( 100.0%)
ST UNC Need Based Grant (CFI Administered)	2,454	4,216	3,803	3,913	110	2.9%
SV Appropriated grant (Non-service scholarship)	0	4,219	4,460	3,388	-1,072	( 24.0%)
SW State-Funded Graduate Assistant Tuition Award Benefit (includes in-state and out-of-state portion)	71	0	0	28	28	0
S2 NC Reach (for Foster Youth)	8	21	16	16	0	0.0%
WE Faculty/Staff Tuition Waivers	38	33	46	113	67	145.7%
IA Athletic Grant-In-Aid	210	200	186	225	39	21.0%
IB Institutional grant/scholarship (need based)	0	0	0	9	9	0
IC Institutional grant/scholarship (non-need based)	3,860	0	1	3,238	3,237	323700%
IF Need Based Campus Initiated Tuition Increase Grants (CITI)	0	4,626	10,876	5,181	-5,695	( 52.4%)
IG Non-Need Based Campus Initiated Tuition Increase Grants (CITI)	9,821	4,914	765	199	-566	( 74.0%)
I9 Other Institutional Scholarship or Grant	0	0	0	763	763	0
OA Externally Administered Private Grant/Scholarship (Non-Athletic)	341	459	431	399	-32	( 7.4%)
OE Penn Family Scholarship	2	6	4	2	-2	( 50.0%)
OG Golden Leaf	10	10	14	11	-3	( 21.4%)
OH Other Non-Federal, Non-NC loan	0	68	65	80	15	23.1%
SZ NC TAP (National Guard Tuition Assistance)	22	16	26	21	-5	( 19.2%)
NH Forgivable Education Loans for Service (FELS)	0	5	7	3	-4	( 57.1%)
TT Total	43,050	45,349	45,220	41,876	-3,344	( 7.4%)



**Financial Aid Comparative Statistics**

	2012-13	2013-14	2014-15	2015-16	Change (2014-15 and 2015-16)	% Change (2014-15 and 2015-16)
<b>Recipients</b>						
FA Federal Pell Grant	3,481	3,542	3,424	3,599	175	5.1%
FB Federal Supplemental Educational Opportunity Grant (SEOG)	1,253	1,253	1,012	863	-149	( 14.7%)
FC Federal Work Study (FWS)	266	313	390	284	-106	( 27.2%)
FD Federal Perkins Loan	64	75	57	59	2	3.5%
FI Federal Direct Loan Program (FDLP)-Subsidized Stafford	3,736	3,753	3,468	3,482	14	0.4%
FJ FDLP-Unsubsidized Stafford	4,189	4,016	3,575	3,641	66	1.8%
FK FDLP-PLUS	65	117	172	264	92	53.5%
FL FDLP-Grad PLUS	0	0	0	2	2	0
FT DC Tuition Assistance Grant (TAG)	35	42	29	31	2	6.9%
FV Federal Teach Grant (but actually a loan)	0	0	0	18	18	0
F7 Other federal loan	23	0	0	0	0	0
F8 Other federal forgivable loan	0	0	0	24	24	0
SB UNC Campus Scholarship Program (SEAA Administered)	162	152	149	123	-26	( 17.4%)
SE Millennial Teaching Scholarship/Loan (forgivable loan)	1	0	0	0	0	0
SH Education Lottery Scholarship (CFI Administered)	360	360	349	393	44	12.6%
SP Nurse Scholars Program (forgivable loan)	3	0	0	0	0	0
SQ Principal Fellows Program (forgivable loan)	2	5	6	3	-3	( 50.0%)
SR Prospective Teacher Scholarship Loan (forgivable loan)	4	3	2	0	-2	( 100.0%)
ST UNC Need Based Grant (CFI Administered)	2,454	2,266	1,998	2,118	120	6.0%
SV Appropriated grant (Non-service scholarship)	0	2,389	2,420	1,942	-478	( 19.8%)
SW State-Funded Graduate Assistant Tuition Award Benefit (includes in-state and out-of-state portion)	45	0	0	20	20	0
S2 NC Reach (for Foster Youth)	6	13	9	8	-1	( 11.1%)
WE Faculty/Staff Tuition Waivers	27	24	27	73	46	170.4%
IA Athletic Grant-In-Aid	109	101	97	116	19	19.6%
IB Institutional grant/scholarship (need based)	0	0	0	9	9	0
IC Institutional grant/scholarship (non-need based)	2,161	0	1	1,626	1,625	162500%
IF Need Based Campus Initiated Tuition Increase Grants (CITI)	0	2,649	3,299	2,882	-417	( 12.6%)
IG Non-Need Based Campus Initiated Tuition Increase Grants (CITI)	3,713	2,635	393	131	-262	( 66.7%)
I9 Other Institutional Scholarship or Grant	0	0	0	339	339	0
OA Externally Administered Private Grant/Scholarship (Non-Athletic)	171	223	205	189	-16	( 7.8%)
OE Penn Family Scholarship	1	3	2	1	-1	( 50.0%)
OG Golden Leaf	6	5	7	6	-1	( 14.3%)
OH Other Non-Federal, Non-NC loan	0	43	37	48	11	29.7%
SZ NC TAP (National Guard Tuition Assistance)	14	11	14	17	3	21.4%
NH Forgivable Education Loans for Service (FELS)	0	3	4	2	-2	( 50.0%)
TR Total Recipients	22,351	23,996	21,146	22,313	1,167	5.5%

**Financial Aid Comparative Statistics**

	2012-13	2013-14	2014-15	2015-16	Change (2014-15 and 2015-16)	% Change (2014-15 and 2015-16)
<b>Dollars Awarded</b>						
FA Federal Pell Grant	\$14,215,291	\$14,886,268	\$14,570,517	\$15,311,234	\$740,717	5.1%
FB Federal Supplemental Educational Opportunity Grant (SEOG)	706,118	800,580	622,930	573,771	-49,159	( 7.9%)
FC Federal Work Study (FWS)	296,963	434,950	482,041	356,030	-126,011	( 26.1%)
FD Federal Perkins Loan	260,994	321,849	254,077	256,285	2,208	0.9%
FI Federal Ford Direct Loan Program (FDLP)-Subsidized Stafford	13,776,230	14,819,014	13,644,191	13,497,132	-147,059	( 1.1%)
FJ FDLP-Unsubsidized Stafford	20,009,019	19,663,029	17,662,032	17,713,458	51,426	0.3%
FK FDLP-PLUS	352,985	594,264	682,928	1,433,295	750,367	109.9%
FL FDLP-Grad PLUS	0	0	0	12,062	12,062	0
FT DC Tuition Assistance Grant (TAG)	325,000	400,000	275,000	280,000	5,000	1.8%
FV Federal Teach Grant (but actually a loan)	0	0	0	33,552	33,552	0
F7 Other federal loan	169,801	0	0	0	0	0
F8 Other federal forgivable loan	0	0	0	43,123	43,123	0
SB UNC Campus Scholarship Program (SEAA Administered)	250,654	348,267	342,960	292,823	-50,137	( 14.6%)
SE Millennial Teaching Scholarship/Loan (forgivable loan)	6,500	0	0	0	0	0
SH Education Lottery Scholarship (CFI Administered)	361,026	413,186	395,125	426,473	31,348	7.9%
SP Nurse Scholars Program (forgivable loan)	5,000	0	0	0	0	0
SQ Principal Fellows Program (forgivable loan)	57,068	147,068	168,272	85,108	-83,164	( 49.4%)
SR Prospective Teacher Scholarship Loan (forgivable loan)	11,500	12,000	6,000	0	-6,000	( 100.0%)
ST UNC Need Based Grant (CFI Administered)	3,396,579	3,500,701	3,334,118	3,326,058	-8,060	( 0.2%)
SV Appropriated grant (Non-service scholarship)	0	585,856	647,337	589,571	-57,766	( 8.9%)
SW State-Funded Graduate Assistant Tuition Award Benefit (includes in-state and out-of-state portion)	127,860	0	0	21,000	21,000	0
S2 NC Reach (for Foster Youth)	25,161	66,725	34,194	49,062	14,868	43.5%
WE Faculty/Staff Tuition Waivers	34,599	31,800	41,356	107,027	65,671	158.8%
IA Athletic Grant-In-Aid	739,146	647,707	623,902	773,217	149,315	23.9%
IB Institutional grant/scholarship (need based)	0	0	0	12,657	12,657	0
IC Institutional grant/scholarship (non-need based)	508,185	0	366	1,467,565	1,467,199	400874%
IF Need Based Campus Initiated Tuition Increase Grants (CITI)	0	1,307,896	2,743,653	733,382	-2,010,271	( 73.3%)
IG Non-Need Based Campus Initiated Tuition Increase Grants (CITI)	2,885,838	1,527,701	258,451	594,906	336,455	130.2%
I9 Other Institutional Scholarship or Grant	0	0	0	964,536	964,536	0
OA Externally Administered Private Grant/Scholarship (Non-Athletic)	331,206	415,200	375,605	389,430	13,825	3.7%
OE Penn Family Scholarship	2,000	3,000	3,000	3,000	0	0.0%
OG Golden Leaf	15,000	15,000	21,000	16,500	-4,500	( 21.4%)
OH Other Non-Federal, Non-NC loan	0	242,996	253,253	304,057	50,804	20.1%
SZ NC TAP (National Guard Tuition Assistance)	35,813	13,368	40,894	37,162	-3,732	( 9.1%)
NH Forgivable Education Loans for Service (FELS)	0	12,250	24,500	8,750	-15,750	( 64.3%)
TT Total	58,905,536	61,210,675	57,507,702	59,712,225	2,204,523	3.8%

# FACT SHEET

## *Demonstrating the Economic Value of Fayetteville State University to the Sandhills and the state of North Carolina*

JANUARY 2015

Fayetteville State University (FSU) improves higher education delivery throughout the region and helps students increase their employability and potential. By facilitating new research and drawing students and visitors to the Sandhills, the university also generates new dollars and opportunities for the region. The purpose of this analysis is to assess the impact of FSU on the regional economy, defined as the counties of Cumberland, Bladen, Harnett, Hoke, Moore, Robeson, and Sampson. The analysis also looks at the benefits generated for students, North Carolina as a whole, and taxpayers.

*Our analysis shows that in FY 2012-13, the \$112.8 million in payroll and operations spending of FSU, together with its construction spending and the spending of its students, visitors, and alumni, created **\$266.6 MILLION** in added regional income. This is equal to approximately **0.9%** of the total Gross Regional Product of the Sandhills, and is equivalent to creating **5,128** new jobs.*

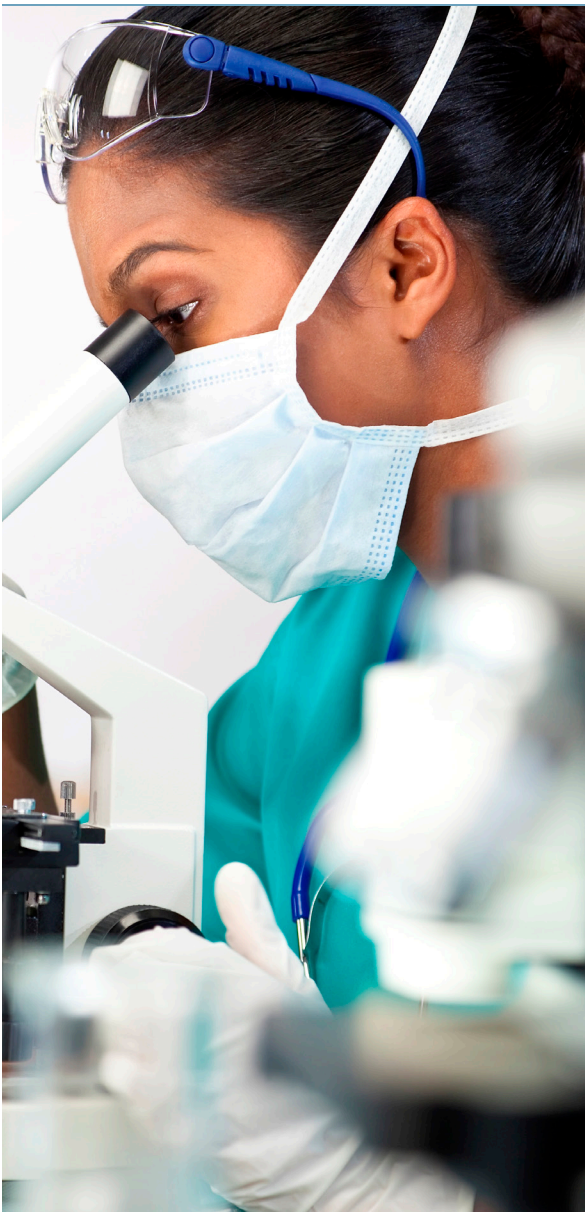
---

## IMPACT ON THE REGIONAL BUSINESS COMMUNITY

During the analysis year, FY 2012-13, FSU spent **\$68.3 MILLION** on payroll and benefits for **1,037** full-time and part-time employees, and spent another **\$44.5 MILLION** on goods and services to carry out its day-to-day operations and research. This initial round of spending creates more spending across other businesses throughout the regional economy, resulting in the commonly referred to multiplier effects. We estimate these multiplier effects in this study and report the *additional* economic activity that is created by the initial spending of FSU.\* Impacts are reported in terms of total income, which is analogous to Gross Regional Product, and the corresponding number of jobs created.

---

\* Note: Our estimated economic impacts are conservative in that we directly take into account the fact that state and local dollars spent on the university could have been spent elsewhere in North Carolina if not directed toward FSU, and thus would have created some economic impacts regardless. We account for these alternative uses of funds directly in our analysis by (i) assuming that if funds were not directed to FSU, they would have been returned to the taxpayer and generate economic impacts through household spending on goods and services, and (ii) subtracting the estimated economic impacts generated by this alternative use of funds from the estimated economic impacts of FSU. Thus, we report a net impact of FSU that is above and beyond what would have occurred had the funds been returned to the taxpayer.



These economic impacts break down as follows:

#### *Operations spending impact*

- Payroll and non-pay expenditures to support day-to-day operations (less research) of FSU amounted to **\$57.6 MILLION** and **\$38.5 MILLION**, respectively. The net impact of the university's operations spending in the Sandhills during the analysis year was approximately **\$75 MILLION** in added regional income, which is equivalent to creating **1,127** jobs.

#### *Research spending impact*

- Research activities of FSU impact the regional economy by employing people and making purchases for equipment, supplies, and services. They also facilitate new knowledge creation throughout the Sandhills. In FY 2012-13, FSU spent **\$10.7 MILLION** on payroll to support research activities.
- Research spending of FSU generates **\$14.2 MILLION** in added regional income for the Sandhills economy, which is equivalent to creating **216** new jobs.

#### *Construction spending impact*

- FSU built or renovated a number of its facilities during the analysis year. This spending generated a short-term infusion of income and jobs in the regional economy.
- The net impact of the university's construction spending in FY 2012-13 was **\$585.9 THOUSAND** in added regional income, equivalent to **17** new jobs.

#### *Student spending impact*

- Around **32%** of graduate and undergraduate students attending FSU originated from outside the region. Some of these students relocated to the Sandhills and spent money on groceries, transportation, rent, and so on at Sandhills businesses.
- The expenditures of students who relocated to the region during the analysis year added approximately **\$7 MILLION** in regional income for the Sandhills economy, which is equivalent to creating **161** new jobs.

**IMPACTS CREATED BY FSU IN FY 2012-13**

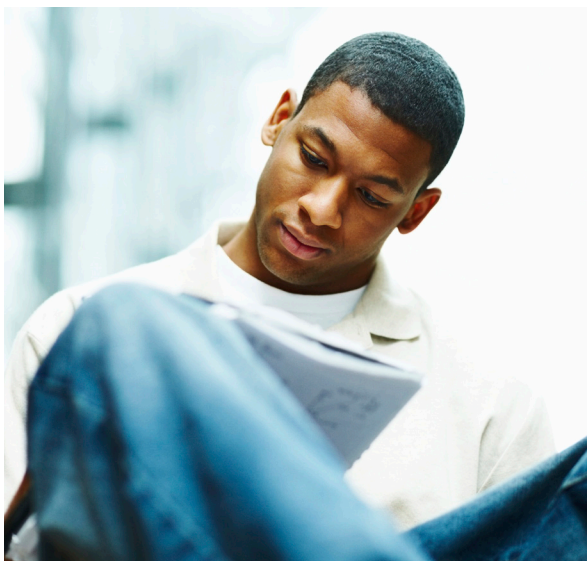
INCOME	JOBS
<b>\$75 MILLION</b>	<b>1,127</b>
Operations spending impact	
<b>\$14.2 MILLION</b>	<b>216</b>
Research spending impact	
<b>\$585.9 THOUSAND</b>	<b>17</b>
Construction spending impact	
<b>\$7 MILLION</b>	<b>161</b>
Student spending impact	
<b>\$1.8 MILLION</b>	<b>54</b>
Visitor spending impact	
<b>\$167.9 MILLION</b>	<b>3,553</b>
Alumni impact	
<b>\$266.6 MILLION</b>	<b>5,128</b>
Total impact	

*Visitor spending impact*

- Out-of-region visitors attracted to the Sandhills for activities at FSU brought new dollars to the economy through their spending at hotels, restaurants, gas stations, and other regional businesses.
- Visitor spending added approximately **\$1.8 MILLION** in regional income for the Sandhills economy, which is equivalent to creating **54** new jobs.

*Alumni impact*

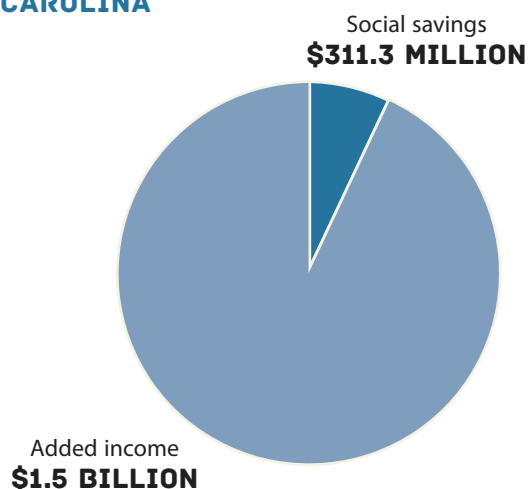
- Over the years, students gained new skills, making them more productive workers, by studying at FSU. Today, thousands of these former students are employed in the Sandhills.
- The accumulated contribution of former FSU students currently employed in the Sandhills workforce amounted to **\$167.9 MILLION** in added regional income to the Sandhills economy, which is equivalent to creating **3,553** new jobs.



## FOR EVERY \$1 SPENT BY...

<b>STUDENTS</b>	<p><b>\$3.00</b></p> <p>Gained in lifetime income for STUDENTS</p>
<b>SOCIETY</b>	<p><b>\$8.80</b></p> <p>Gained in added state income and social savings for SOCIETY</p>
<b>TAXPAYERS</b>	<p><b>\$3.90</b></p> <p>Gained in added taxes and public sector savings for TAXPAYERS</p>

## PRESENT VALUE OF ADDED INCOME AND SOCIAL SAVINGS IN NORTH CAROLINA



### ABOUT EMSI

Economic Modeling Specialists International turns labor market data into useful information that helps organizations understand the connection between economies, people, and work. Since 2000, EMSI has completed numerous economic impact studies for educational institutions across the US, Canada, the UK, and Australia. It also provides industry-leading labor market data via software and reports to higher education professionals, workforce planners, and regional developers in the U.S. and internationally. For more information, visit [www.economicmodeling.com](http://www.economicmodeling.com).

## RETURN ON INVESTMENT TO STUDENTS, SOCIETY, AND TAXPAYERS

### Student perspective

- Students attending FSU during FY 2012-13 paid a total of **\$19.5 MILLION** to cover the cost of tuition, fees, books, and supplies. They also forewent **\$89.7 MILLION** in money that they would have earned had they been working instead of learning.
- In return for the money students invest to earn their degrees, they will receive a present value of **\$332.3 MILLION** in estimated increased earnings over their working lives.
- This translates to a return of **\$3.00** in higher future income for every \$1 that students invest in their FSU education. The average annual return for students is **13.2%**.

### Societal perspective

- North Carolina as a whole will receive a present value of **\$1.5 BILLION** in added state income over the course of the students' working lives. Communities will also benefit from **\$311.3 MILLION** in present value social savings related to reduced crime, lower unemployment, and increased health and well-being across the state.
- For every dollar that society spent on educations at FSU during the analysis year, North Carolina communities will receive a cumulative value of **\$8.80** in benefits, for as long as the 2012-13 students of FSU remain active in the state workforce.

### Taxpayer perspective

- In FY 2012-13, state taxpayers in North Carolina invested **\$50.4 MILLION** to support the operations of FSU. The net present value of the added tax revenue stemming from the students' higher lifetime incomes and the increased output of businesses amounts to **\$143.3 MILLION** in benefits to taxpayers. Savings to the public sector add another **\$53.5 MILLION** in benefits due to a reduced demand for government-funded services in North Carolina.
- Dividing benefits to taxpayers by the associated costs yields a **3.9** benefit-cost ratio, i.e., every \$1 in costs returns \$3.90 in benefits. The average annual return on investment for taxpayers is **12.9%**.

# Fayetteville State University

The Campus Master Plan expresses the vision for Fayetteville State University's continued physical development achieving a balance of preserving existing landmarks, new development, and renovations. This plan accommodates future growth and achievement of the University's strategic goals in line with the academic mission.

Based on the new Master Plan, the University anticipates a projected enrollment from 5,600 students to 9,600 students within the next 20 years. These recommendations will require an estimated \$500 million in capital improvements. Priority projects are also identified for implementation within the next six years. These projects will provide a decision-making framework to help the University guide the campus in its construction efforts to meet immediate needs as well as those to come in future years



## Facilities

## Facilities Inventory

Bldg. No	Name	Year Constr.	Gross Area	Bldg. Cost
000A	PAIGE ALUMNI HOUSE	1922	5,097	\$13,000
001+001A	ROSENTHAL BUILDING	1966	26,353	397,245
002	LILLY GYM	1938	32,867	\$317,000
002A	LAURETTA TAYLOR BLDG.	1969	31,940	\$618,000
003B	MITCHELL PRE-SCHOOL	1955	3,304	\$50,000
004	SEABROOK AUDITORIUM	1953	35,193	\$7,965,000
006	TAYLOR SOC SCIENCES BLDG.	1939	20,901	\$122,000
006A	JOSEPH KNUCKLES SCIENCE ANNEX	1968	22,548	\$2,552,000
007	JOYNER HALL	1930	18,984	\$57,000
009	BRYANT HALL	1966	40,662	\$607,000
010	HARRIS HALL	1938	26,688	\$71,000
011	COOK HALL	1923	18,267	\$93,000
012	SMITH HALL	1953	20,604	\$230,000
013	SPAULDING INFIRMARY	1955	6,020	\$104,000
014	COMMUNICATION CENTER	1937	12,582	\$36,000
015B	NEWBOLD TRAINING	1958	4,417	\$88,000
016	VANCE HALL	1966	55,917	\$773,000
017	WILLIAMS HALL	1955	11,488	\$128,000
018	HOOD HALL	1939	17,516	\$57,000
019	HELEN T. CHICK BLDG.	1968	37,598	\$1,377,000
020	MAINTENANCE BLDG.	1969	8,200	\$82,000
021	W.R. COLLINS ADMINISTRATION BLDG.	1970	17,346	\$475,000
021A	C.J. BARBER ADMINISTRATION BLDG.	1981	29,162	\$1,328,000
022	RUDOLPH JONES STUDENT CENTER	1972	58,742	\$7,829,240
023	STORAGE BLDG.	1969	720	\$4,000
024A	VEHICLE/GEN SHOP	1983	3,600	\$44,080
025	CONT EDUC CENTER	1976	9,545	\$265,000
026	NEW RESIDENCE HALL	1976	51,670	\$1,580,000
027	BUTLER LEARNING CENTER	1976	75,418	\$2,503,000
027A	MARION "REX AND ARONUL E. HARRIS SBE BLDG.	1991	73,000	\$6,441,000
028	CHANCELLOR'S RES	1976	5,925	\$135,000
029	LYONS SCIENCE	1981	76,686	\$5,040,625
29A	LYONS SCIENCE ANNEX	2008	55,324	\$14,386,555
030	CENTRAL WAREHOUSE	1982	10,945	\$383,920
031	SECURITY BUILDING	1951	2,800	\$23,090
032	RADIO TRANSMIT	1982	220	\$5,154
033	CHARLES CHESNUTT LIBRARY	1987	81,866	\$8,299,000
034	MITCHELL STORAGE	1980	96	\$450
035	CONCESSION	1978	322	\$1,000
036	PRESS BOX	1997	800	\$630,700
037	RESTROOM	1995	1,610	\$8,688
039	CONCESSION	1987	120	\$6,200
040	CONCESSION	1978	192	\$500
041	FELTON J. CAPEL ARENA	1995	122,464	\$9,700,000
041A	NICK JERALDS STADIUM	2003	10,585	\$2,567,926
042	HONORS HALL	1997	37,500	\$3,479,600
043	McCloud Hall	2005	63,512	\$6,529,000
044	PHYSICAL PLANT	1982	4,717	\$8,000
045	SE NC NURSING ED	2011	37,458	8,199,390
046	Renaissance Hall	2012	86,499	\$14,718,781
047	Science & Technology	2012	72,101	20,884,213





Fayetteville State University  
1200 Murchison Road  
Fayetteville, North Carolina 28301-4298  
910.672.1111  
[www.uncfsu.edu](http://www.uncfsu.edu)

Fayetteville State University is a member institution of The University of North Carolina, which is committed to equality of educational opportunity and does not discriminate against applicants, students, or employees based on race, color, national origin, religion, sex, age, or disability.